

FITMENT INSTRUCTIONS

Awning Strap - Condensed

1. Awning Strap Fitment – Tools, Fasteners & Materials

Tools Required:

TOOL	PURPOSE
Drill	Drill mounting holes into provided extrusion and vehicle
4.8mm Drill Bit	Drill mounting holes into rope mould and vehicle
Rivet Gun	Fix rivets to mounting parts

Hardware Supplied:

ITEM	QTY
C-Clamp aluminium extrusion	1
C-Clamp strap	1
Buckle strap	1
Black adhesive foam strip	2

Fasteners supplied

ITEM	QTY
4.8X15 Fender Rivet	1
4.8X10 Normal Rivet	2
4.8X15 Normal Rivet	2

Consumables Required:

ITEM	PURPOSE
Turpentine	Cleaning purposes
Cloth	Cleaning purposes
Black silicone or Sikaflex	Stick C-Clamp extrusion to vehicle before riveting

Parts:



Figure 1: C-Clamp Aluminium Extrusion



Figure 2: C-Clamp Strap



Figure 3: Buckle Strap



Figure 4: Black adhesive foam strip

All rights reserved. No part of this document may be reproduced, translated, stored in a retrieval system, or transmitted, in any form or by any means, electronic, mechanical, photocopying, recording or otherwise, without prior written permission of the owner.

Review all instructions information carefully before installation.

Any damages, direct or incidental to the installer and/or property due to incorrect installation of any parts are the responsibility of the installer. Due to the various applications and fitment options available, the responsibility lies with the user to ensure all mounting points are secure and tight before every trip. If unsure, consult with your Distributor regarding the operations of our products.

Users are advised to be mindful of the load they are carrying and drive in accordance with road conditions.

2. Mounting the C-Clamp Aluminium Extrusion to the vehicle's rear end

Step 1: Select a suitable location for the C-Clamp aluminium extrusion based on your vehicle. Place the C-Clamp aluminium extrusion on a surface where it can be drilled and mark off the locations of where the two holes must be drilled. After marking off, drill the holes into C-Clamp aluminium extrusion. This is done using a hand drill and a 4.8mm drill bit.

You should drill two evenly spaced holes along the length of the C-Clamp aluminium extrusion. See Figure 5.



Figure 5: C-Clamp extrusion with holes drilled

Step 1 - Additional Notes: It is important to note that this extrusion can be located in many various locations.

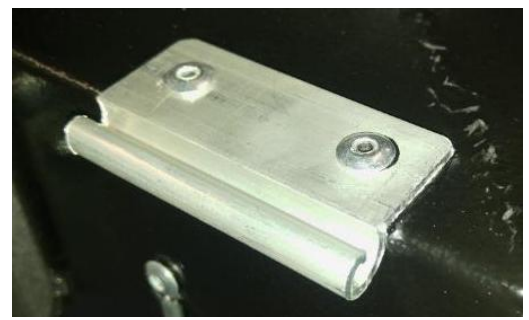
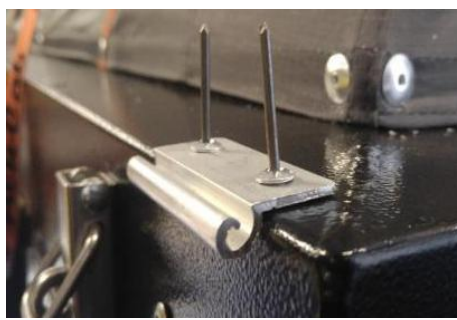
The images show the extrusion mounted on the top side of a Gen 3 tent base. It could also be mounted on the side face of the tent base - The side mount option is advised for Alu-Cab units with rear-mounted accessories such as helper shocks, that may interfere with the awning strap location, in the top surface position.

Always double check your intended location, before drilling and mounting!

Step 2: Place the C-Clamp aluminium extrusion on the vehicle / Alu-Cab base unit in position and drill the mounting holes using the C-Clamp extrusion holes as a guide. This is done using a hand drill and a 4.8mm drill bit.

Step 3: Before fixing the C-Clamp extrusion to the vehicle / Alu-Cab base unit, silicone must be applied to the interfacing surface of the C-Clamp extrusion. Use black silicone or Sikaflex. Place the rivets in and rivet the C-Clamp to the rear end of the vehicle.

Note: If the C-Clamp extrusion is being attached to a roof rack or tubing, use the 4.8x15 normal rivets. If the C-Clamp extrusion is being attached to a sheet metal surface such as a tent then use the 4.8x10 normal rivets

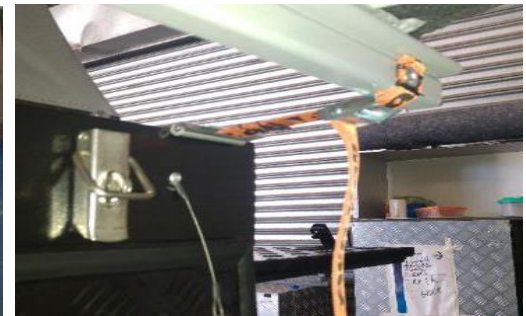
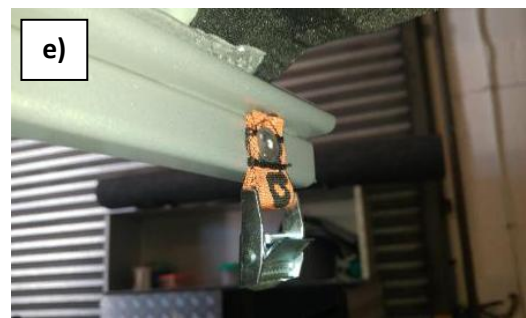
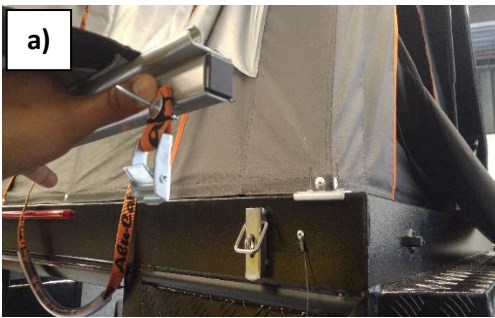


WARNING

Always wear appropriate PPE (Personal protection equipment) when fitting this product. Although the mounting kit is designed to be DIY, if you have any doubts or concerns, contact an accredited fitment centre to carry out the work. Alu-Cab will not be liable for any injury to persons, and/or damage to products and/or vehicles.

Step 4: The buckle strap needs to be fitted to the last awning arm in line with the C-Clamp extrusion. A hole will need to be drilled to rivet the buckle strap to the awning arm.

- a) Trim the buckle strap rope as needed (it is supplied with a long rope)
- b) Open the awning and mark off the hole location on the awning where the hole will be drilled. Ensure this is in line with the C-Clamp extrusion. Figure 9 shows a trimmed buckle strap which is in line with the C-Clamp extrusion.
- c) After marking off, drill the hole into the last awning arm using a hand drill and a 4.8mm drill bit.
- d) Drill a hole into the buckle strap using the hand drill and 4.8mm drill bit.
- e) Using the 4.8x15 Fender rivet and rivet gun, rivet the buckle strap onto the awning arm.
- f) Pull the C-Clamp strap through the buckle to tighten the awning as shown in the pictures below
- g) Use a cloth and turpentine to clean up any excess silicone



Step 5: There are two black adhesive foams strips provided with the awning. Peel the white plastic off and stick these foam strips to the bottom of the awning arms to prevent the side and rear doors of a canopy, camper or any other vehicle from fouling the awning arms.

