



Gen 3 Tent Side Rain Cover

Fitment Instructions



1. Tent Side Door flysheet cover – Tools, Fasteners & Materials

The tables below show the equipment, i.e. tools, fasteners, hardware and consumables required to start and finish the fitment of the side door flysheet cover.

Hardware Supplied with Universal Awning mount kit:

Part No.	Description	Qty
440-CR-SPNG-BRKT-LHS-01-00	Cargo Rail Spring Pole Bracket LHS	1
440-CR-SPNG-BRKT-RHS-01-00	Cargo Rail Spring Pole Bracket RHS	1
M8 Eyenut	M8 Eyenut	1
M8 Spring Washer	M8 Spring Washer	1
M8 Flat Washer	M8 Flat Washer	1
M6 Eyenut low profile	M6 Eyenut	4
M6 flat washer	M6 flat washer	4
M6 spring washer	M6 spring washer	4
Flexi Ties	LARGE FLEXI TIES FOR AWNINGS	6
M8x20 Cup square bolt	M8x20 Cup square bolt	5
M8 Nylock Nut	M8 Nylock Nut	4
M8 Plastic Nut Cap	M8 Plastic Nut Cap	4
6mm spring hook	6mm spring hook, Open type A4	2
Spring Poles	Spring Poles (980mm OD Length)	2
Rain cover	Rain cover	1
Lower Rain cover tensioner	300mm length buckle strap with loop on the end	1
Upper Rain cover tensioner	1m length buckle strap with loop on the end	1
Strap to secure rain cover when rolled up	450mm buckle strap stitched on to M6 low profile eye nut	1

1.1 Tools required to fit Gen 3 tent side door flysheet cover:

TOOL	PURPOSE
13mm spanner or socket	Tighten various nuts
Ratchet	Fastening various bolts
Allen key	Tightening eye nut on the back of the tent handle

Part Identification:



Figure 1: Spring Pole bracket for cargo rail LHS

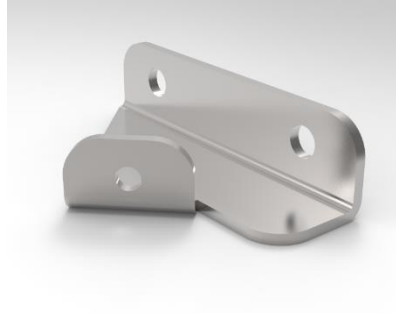


Figure 2: Spring Pole bracket for cargo rail RHS



Figure 3: Upper rain cover tensioner (already attached to rain cover)



Figure 4: Lower rain cover tensioner (already attached to rain cover)

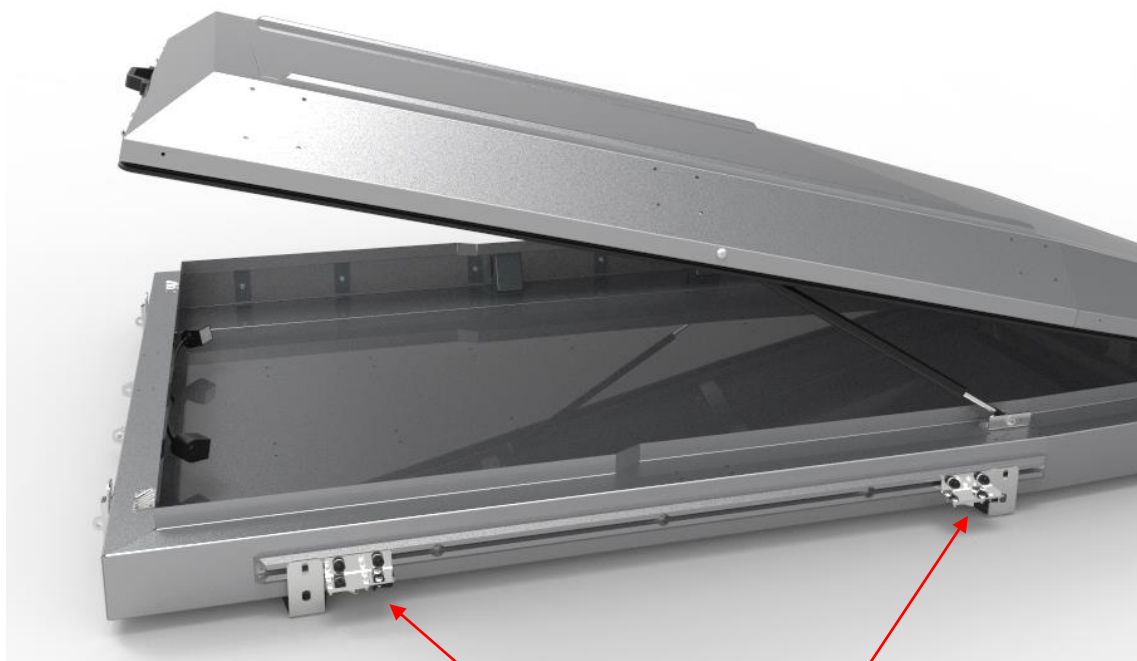
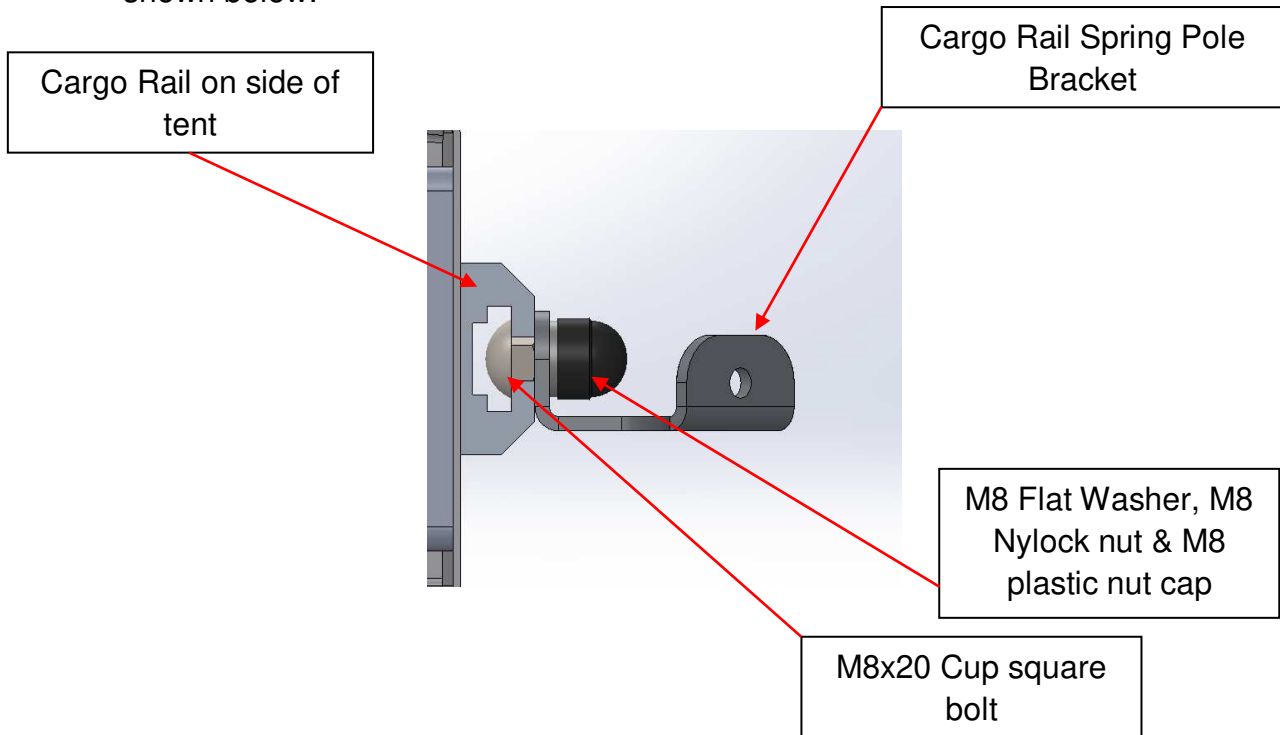


Figure 4: Lower rain cover tensioner (already attached to rain cover)

NOTE: The Side Entrance cover can be used on both sides of the Gen 3 Tent. Naturally the Spring pole brackets and M6 eye nuts must be installed on the side that the Flysheet is going to be used.

Step 1: Fit the cargo rail spring pole brackets to the cargo rail on the side of the tent.

Fasten the cargo rail spring pole bracket onto the cargo rail on the side of the tent as shown below:



Spring pole cargo rail brackets installed. LHS bracket on the left & and RHS Bracket on the right

Step 2: Fit M6 Eye nuts to tent lid

Fit 3 x M6 eye nuts with spring washers to M6 bolts which are already installed on the underside of tent lid as shown below. The cam buckle strap with M6 eye nut must also be installed in the middle of the other two below. The cam buckle strap with the M6 eye nut is used to strap your side entrance cover in place when not used. The fourth M6 eye nut must be installed on the tent lid handle bolt as shown further below.

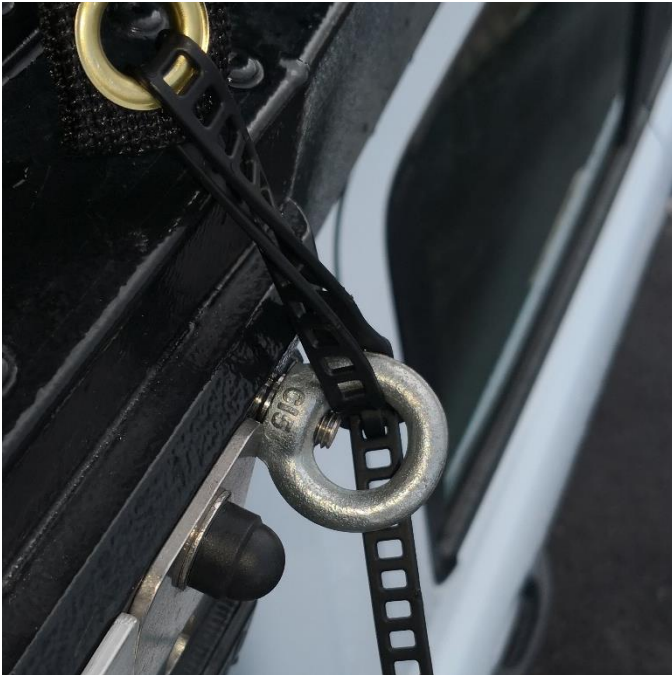


M6 Eye nut & Cam buckle strap with
M6 eye nut fastened in the middle.



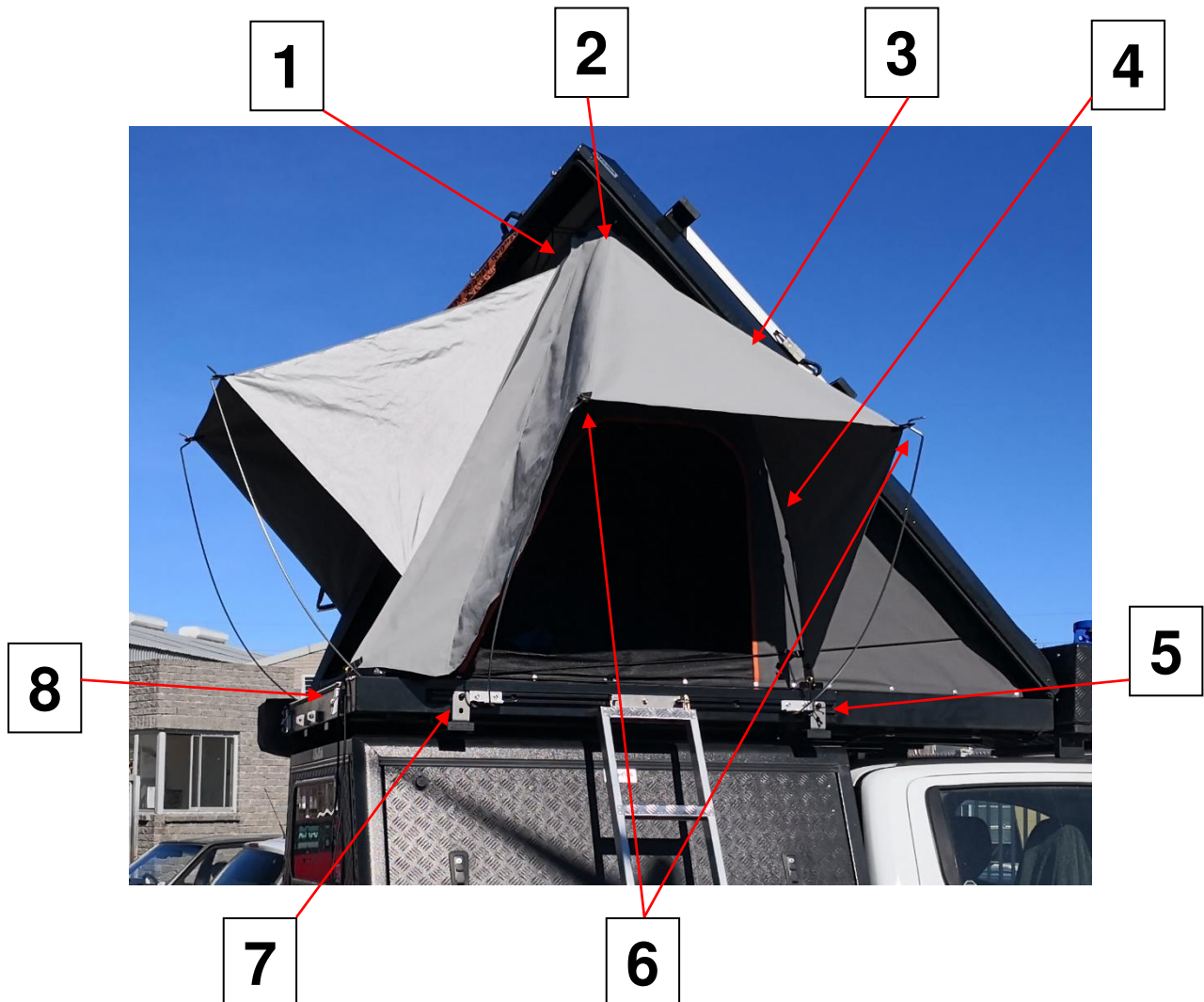
M6 eye nut with spring
washer fastened to
protruding bolt from tent
lid handle

Step 4: Fit the M8 Eye nut to the cargo rail (Optional):



Using the M8x20 Cup square bolt and M8 Spring washer, fasten the eye nut to the cargo rail on the side of the tent. This is optional as you could use the flexi tie to fasten the flysheet to black plastic hook on the bracket or to tent mount as shown below. Should your tent mount be too far away due to your setup, the M8 eye nut will need to be used.

Step 6: Setup flysheet cover



The diagram above shows the attachment points for the flysheet cover, they are explained below:

1. Clip the spring hook from the eyelet at point 1 to the M6 eye nut fastened on to the tent lid handle bolt, ensure the flysheet does not have a lot of slack.
2. Connect the eyelet at point 2 to the M6 eye nut with a flexi tie, tighten as much as possible
3. Connect the eyelet at point 3 to the M6 eye nut with a flexi tie, tighten as much as possible
4. The 2 x Velcro straps at point 4 must be wrapped around the gas strut to close the gap between the flysheet and tent canvas. See pictures below:



Velcro straps around gas strut to close gap to tent canvas

5. Connect the eyelet at point 5 using the spring pole as shown below. Insert the spring pole into the bracket and through the eyelet in the rain cover as shown below. Do the same for point 7.

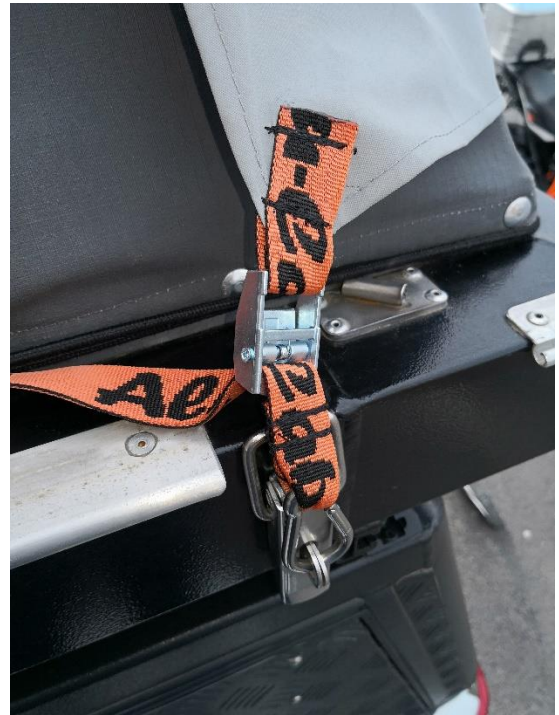


6. Point 6 shows the spring poles installed into their eyelets on the flysheet.

7. Connect the spring hook at point 8 to the tent throw over catch as shown below. Tighten the strap as shown



Spring hook attached to tent catch



Tightened strap.

The Flysheet is now setup and you can enjoy cover from the elements.



Storing the Flysheet when not in use

- Remove the spring poles
- Unclip the spring hooks at point 1 & 8.
- Loosen the 2 Velcro straps wrapped around the gas strut

Roll up flysheet as shown below.



Fasten flysheet in place using the cam buckle strap as shown below and close your tent. Ensure the flysheet is tightened enough so that the flysheet is stowed under the tent lid, it should not obstruct the rubber seal of the tent when closing the tent.

