

# Alu-Cab™

ULTIMATE OVERLAND PRODUCTS



## THE ALU-CAB CANOPY CAMPER



## THE BEST OF BOTH WORLDS...

We give you the lightweight, versatile & modular-designed Canopy Camper...  
A revitalised and improved **mid-range camper solution.**

SEE WEBSITE [www.alu-cab.com](http://www.alu-cab.com)  
TO VIEW THE VEHICLES WE  
CAN CURRENTLY SUPPLY FOR





# Alu-Cab™

ULTIMATE OVERLAND PRODUCTS



## Pick-up or SUV?



Although both vehicles have merits in the overland market, a simple canopy and rooftop-tent installation is a tough thing to beat in terms of space, convenience and payload capacity.

However, there are some limitations to this setup, especially if you want more room to stand up and move around.

Generally speaking, it is at this point that pick-up owners find themselves faced with one of three options:

- 1) Buy a low-cost daily driver and convert your pick-up into a dedicated camper... or
- 2) Stick with what you've got, and invest in a secondary ground tent as a living / changing room, or...
- 3) Buy a high-cost off-road trailer

The problem with all of these solutions is that they're either expensive, space-dependent (you now need parking for two vehicles or a trailer) or they nullify the benefits of owning a pick-up and rooftop tent in the first place – convenience, space, mobility, and not being overly-restricted in how and where you travel.

**But**, what if there was a fourth, relatively-unknown option that only rental vehicles and a few custom rigs are taking advantage of?





# ENTER: The Alu-Cab Canopy Camper



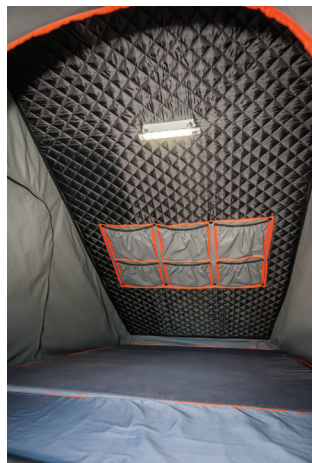
About 10-years ago, we noticed a gap in the 4x4 rental market; essentially, a need for a **lightweight, versatile, mid-range camper solution.**

In many respects, the safari rental market is the ideal testing ground for overland gear, and after exhaustive development, we designed a camper that combined the best of both worlds- it had the lightweight and low-profile benefits of a modular canopy, combined with the versatility and spacious living quarters of a camper.

Although the Canopy Camper was a huge success, the original design didn't lend itself to production. As a result, when we moved away from building custom rigs to a more production-based business model, the Canopy Camper was lost in the transition.

Fortunately, as our family of adventurers grows worldwide, so does the interest in our past projects, leading to many requests for a mid-range, "off-the-shelf" Camper.

And so, without further ado, we give you the lightweight, versatile, and modular-designed Canopy Camper – once an industry-first, but today a revitalised and improved solution, for which we owe kudos to you and your feedback. So, thank **you** for contributing to the **Alu-Cab evolution.**

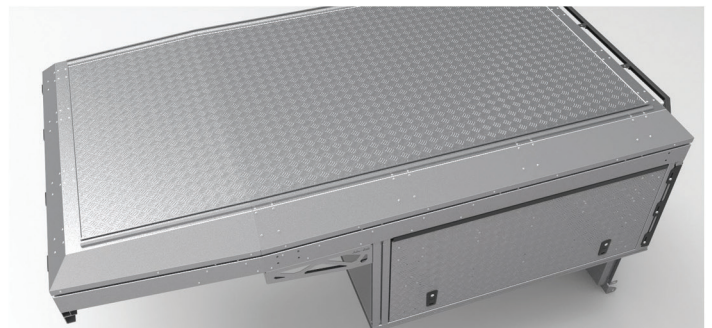




BEST OF BOTH  
WORLDS

## THE ALU-CAB CANOPY CAMPER

# Alu-Cab



### FEATURES:

- » An easy-access vertical door with heavy-duty hinges, and the ability to mount a 33" spare wheel on the back ( no need for an after-market rear bumper and wheel carrier) This also solves the problem of dust entering the tailgate.
- » Proprietary extrusions are used throughout the construction for the drill-free fitment of accessories.
- » Tried and tested dual-layer canvas tent for better thermal insulation.
- » Flip-away bed means ample headroom and standing space.
- » Bedding remains in place whether the tent is open or closed.
- » Roof rails to facilitate the mounting of various rooftop accessories.
- » Side-access canopy doors.

### DIMENSIONS:

Length:	Overall: 2 865mm ( without wheel carrier) and 3035mm ( with wheel carrier)
Height: ( closed)	Overall with roof closed: 1365mm ( complete roof top to bottom of rear door frame) and 870 mm ( loadbin top to roof top)
Height: ( open)	Overall with roof open: 2520 mm ( Loadbin top to roof top)
Width:	Overall: 1600mm
Roof Bed size:	Roof Top Tent Bed: 2600mm L x 1340 mm W
Dry Weight:	( Basic shell) 210kg
Fully kitted weight:	250kg ( approximately)

SEE WEBSITE [www.alu-cab.com](http://www.alu-cab.com)  
TO VIEW THE VEHICLES WE  
CAN CURRENTLY SUPPLY FOR

