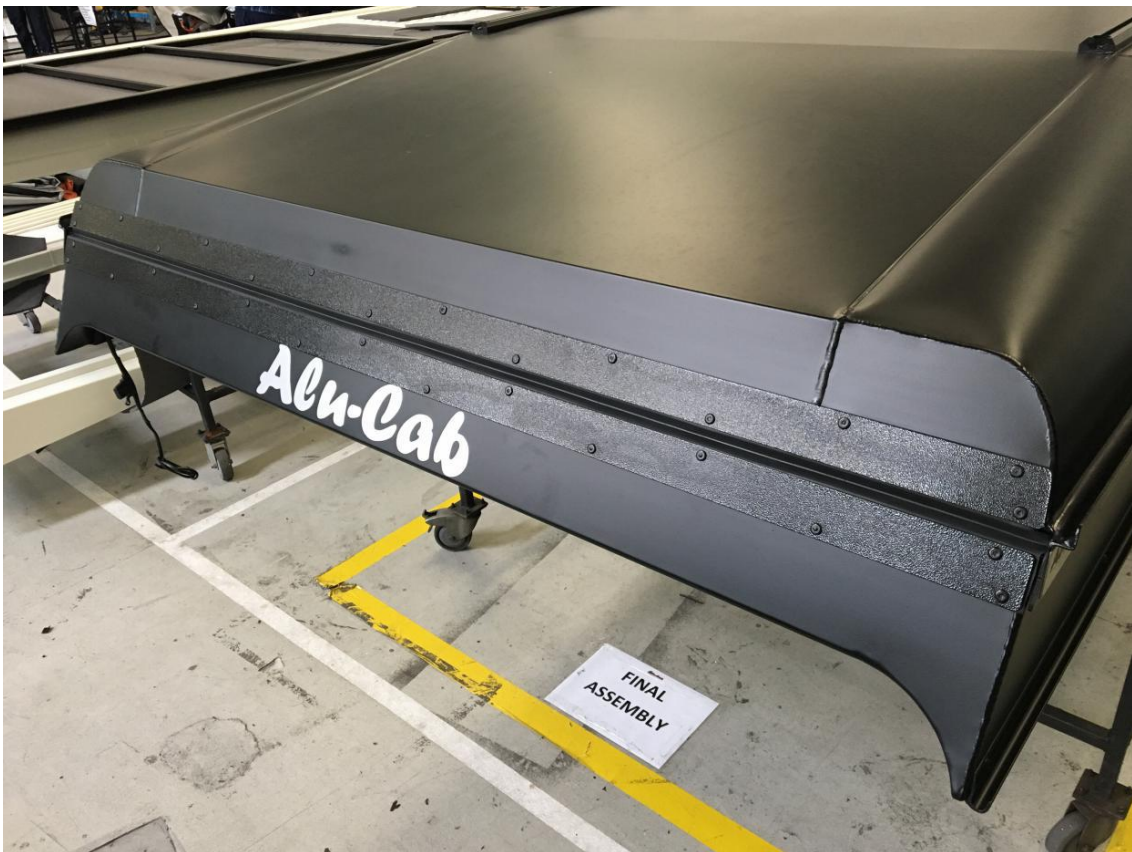




## Icarus and Hercules front rubber seal replacement instructions



The following fitment instruction will show you how to remove the old rubber seal and replace it with the new seal.

## **Front rubber seal – Fasteners & Materials**

The tables below show the equipment, i.e. tools, fasteners, hardware and consumables required to start and finish the fitment of the Roof Rack Tray kit & Load Bar Table Bracket kit:

### **Hardware supplied:**

| <b>ITEM NO.</b> | <b>DESCRIPTION</b>   | <b>QTY.</b> |
|-----------------|----------------------|-------------|
| 1               | FRONT RUBBER SEAL    | 1           |
| 2               | 4.8X10mm BLACK RIVET | 24          |
| 3               | CONTACT ADHESIVE     | 1           |

### **Tools required:**

| <b><u>TOOL</u></b> | <b><u>PURPOSE</u></b> |
|--------------------|-----------------------|
| Rivet Gun          | To fasten new rivets  |
| Drill and 5mm bit  | To remove old rivets  |
| Paint brush        | To apply adhesive     |
| Carpet Knife       | To cut where required |

### **Consumables required:**

| <b><u>ITEM</u></b> | <b><u>PURPOSE</u></b>        |
|--------------------|------------------------------|
| Sand Paper         | To roughen up adhesive areas |
| Masking Tape       | To protect surrounding areas |
| Rag/cloth          | To wipe areas clean          |
| Mineral Turpentine | To remove contact adhesive   |
| Double Sided Tape  | To line up front covers      |

**Part Identification:**



Icarus front seal



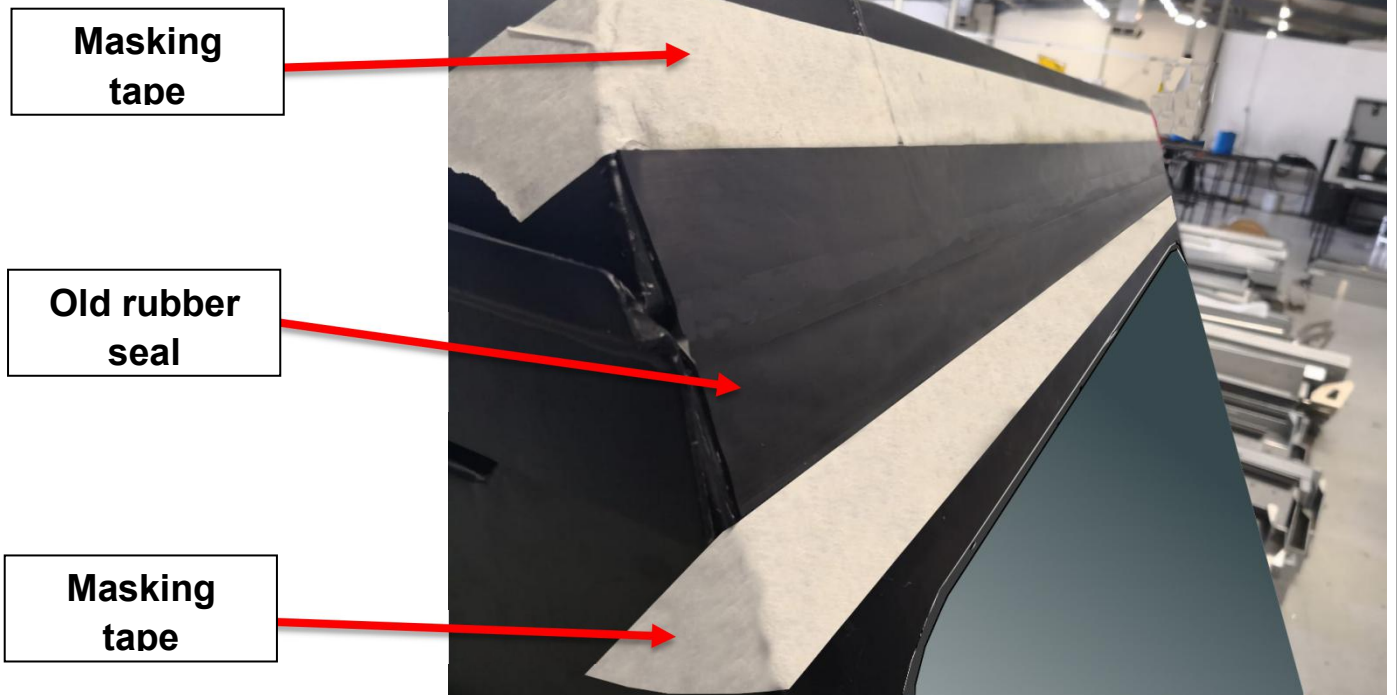
Blind Rivets



Super 65 contact adhesive

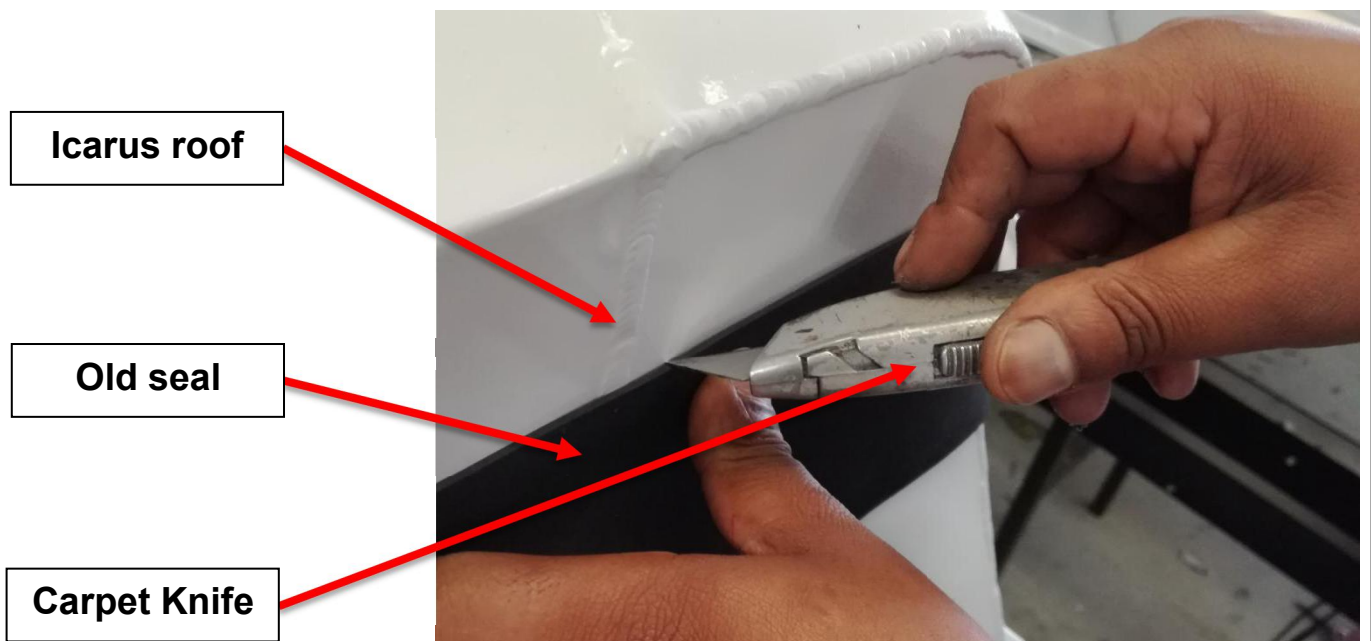
**Step 1:**

Mask off the top and bottom area of the old rubber seal



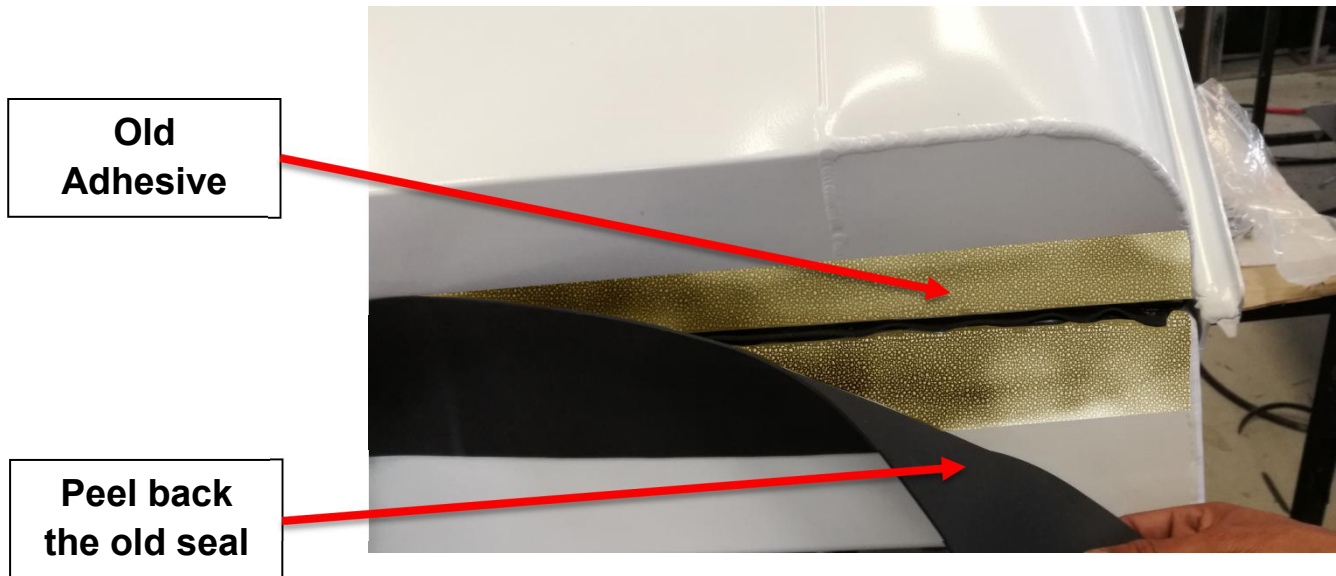
**Step 2:**

Use a carpet knife of similar to cut a line into the paint so that the paint does not chip when you remove the old rubber seal.



### **Step 3:**

Carefully pull back the old rubber seal. Use the carpet knife to assist



**Old  
Adhesive**

**Peel back  
the old seal**

### **Step 4:**

Remove all the glue mechanically, and the residue with mineral turpentine on a cloth.

### **Step 5:**

Use the sand paper to roughen up back of the new seal and the area where the seal will be stuck to. Wipe with mineral turpentine cloth, then allow to dry and wipe any residue oils with a dry cloth.

### **Step 6:**

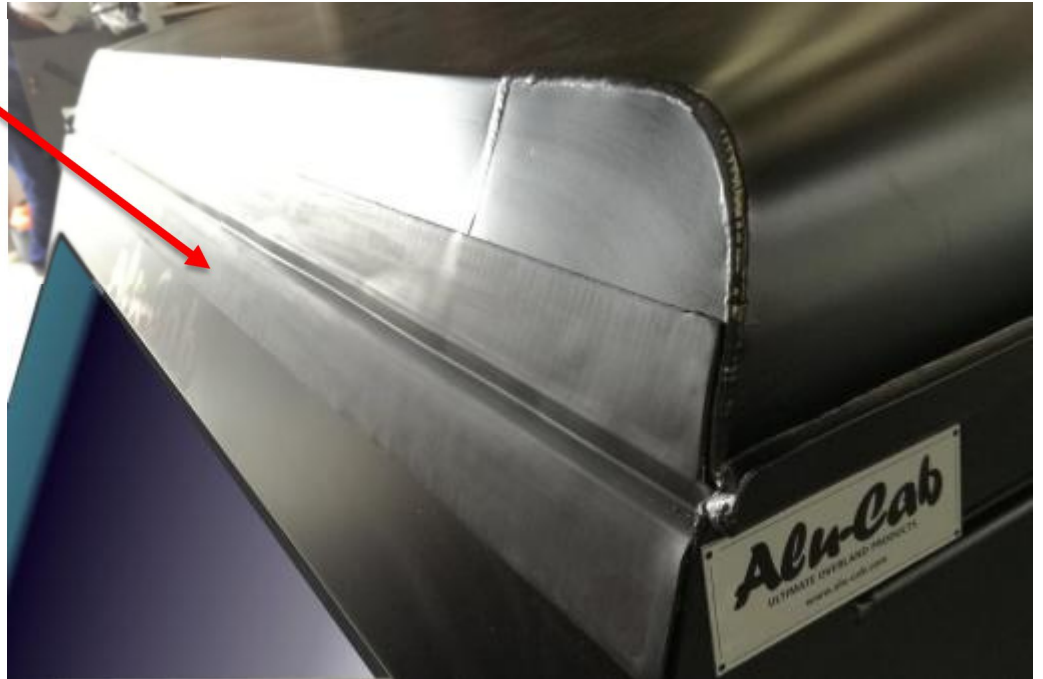
Apply the contact adhesive with a paint brush to the area where the new seal will be stuck to and the back of the new seal. Allow the adhesive to dry till it's tacky.



**Step 7:**

Apply the new seal with the mid section pointing to the hinge. Apply from one side to the other forcing out any air bubbles.

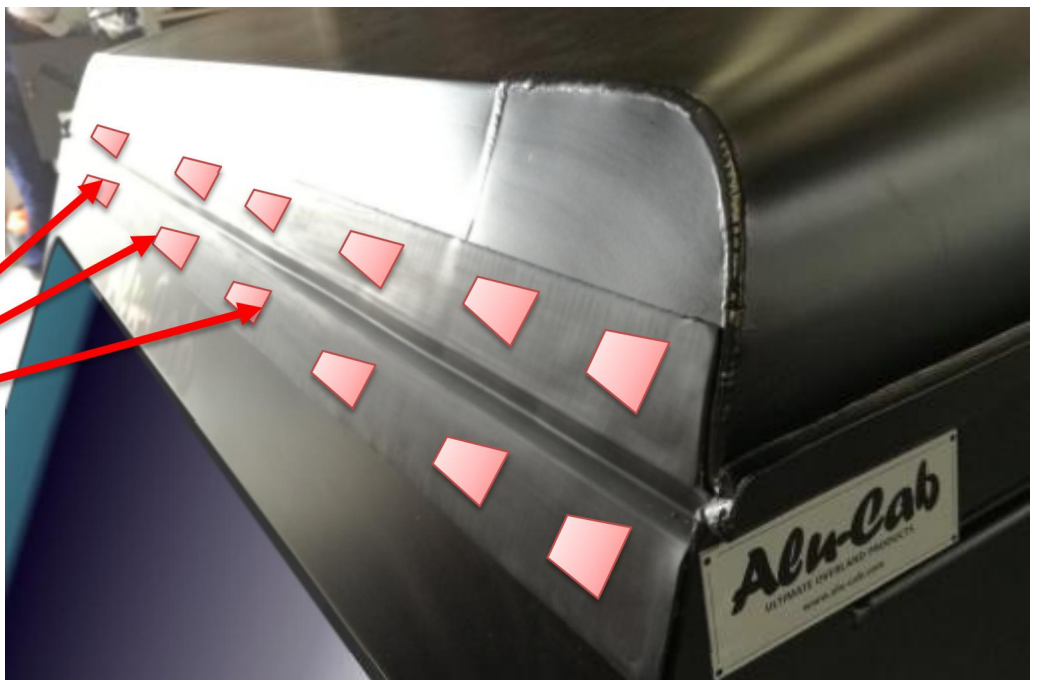
**New Seal**



**Step 8:**

Place a few (+6) 25mm pieces of Double Sided Tape along the length of the new seal to align cover plates correctly on the new seal. Use the cover plates as a guide to drill the rivet holes, starting with the 4 corners.

**Double-Sided  
Tape pieces**

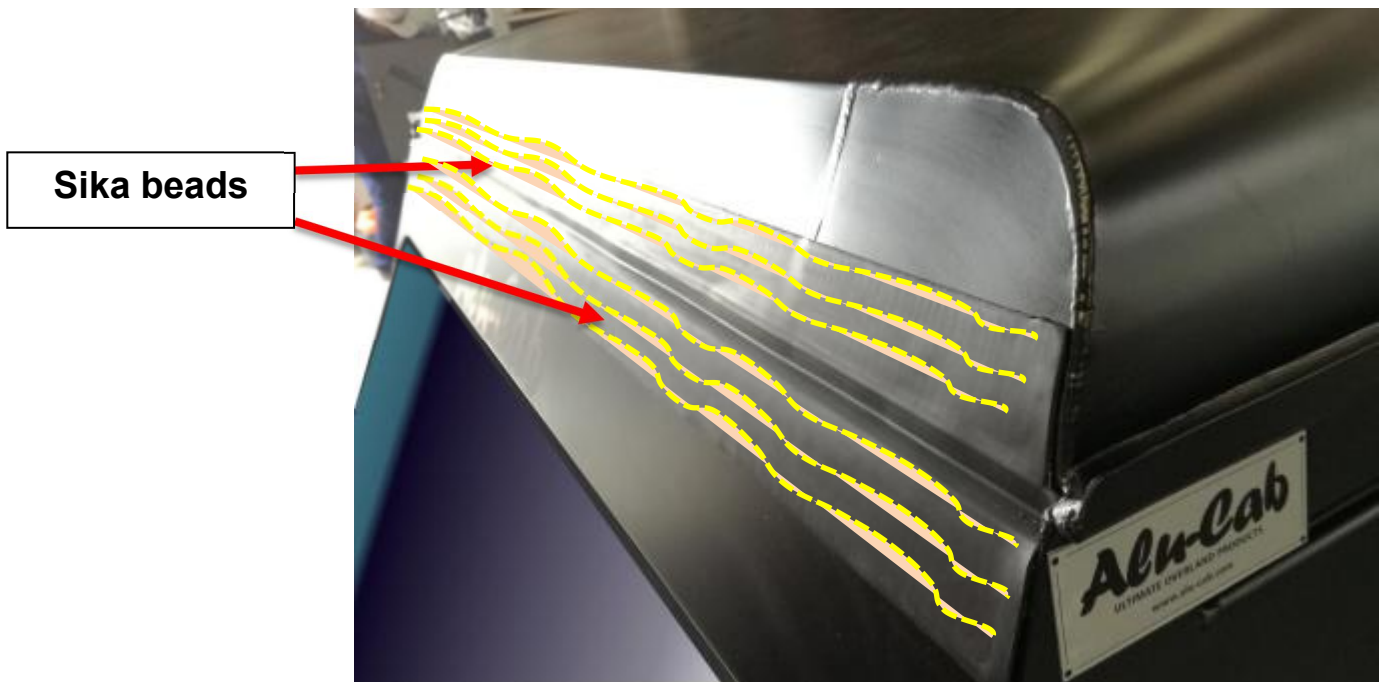


### **Step 9:**

Once the corner holes have been drilled, you can remove the Rubber Cover and take off the Double Sided Tape.

### **Step 10:**

To create a water tight seal, Black Sika Must be added to the back of the Rubber Cover. Be careful to not add too much that it squeezes out once the Rubber Cover is riveted on. Just add 2-3 long beads of Black Sika along the length of the Rubber Cover.



### **Step 11:**

You can now place and rivet the Rubber Cover through the 4 corner holes to the Icarus Front. At this stage you can add a small bit of Black Sika to each rivet just before popping them in to the Rubber Cover/Icarus.

**Step 12:**

Pop on the rest of the rivets and clean up and places where there is excess Sika with soap and a cloth. Job done!

