



Awning Gutter

Fitment Instructions



1. Awning Gutter Fitment – Tools, Fasteners & Materials

The tables below show the equipment, i.e. tools, fasteners, hardware and consumables required to start and finish the awning gutter fitment.

1.1. Tools Required:

<u>TOOL</u>	<u>PURPOSE</u>
<ul style="list-style-type: none">• Drill	Drill mounting holes into rope mould and vehicle
<ul style="list-style-type: none">• 4.8mm Drill Bit	Drill mounting holes into rope mould and vehicle
<ul style="list-style-type: none">• Rivet Gun	Fix rivets to mounting parts

1.2. Fasteners required: (Included with canopy)

<u>ITEM</u>	<u>QUANTITY</u>
<ul style="list-style-type: none">• 4.8X15AS Blind Rivets	4 off
<ul style="list-style-type: none">• 4.8X10AS Black Rivets	5 off

1.3. Hardware Required:

<u>ITEM</u>	<u>PURPOSE</u>
<ul style="list-style-type: none">• Rope Mould (925mm)	1 off
<ul style="list-style-type: none">• Canvas Gutter	1 off
<ul style="list-style-type: none">• Velcro Strap	1 off

1.4. Consumables Required:

<u>ITEM</u>	<u>PURPOSE</u>
• Turpentine	Cleaning purposes
• Cloth	Cleaning purposes
• Black silicone or Sikaflex	Stick Rope Mould to vehicle before riveting



Figure 1: Rope Mould



Figure 2: Awning Gutter



Figure 3: Velcro Strip

2. Mounting the Rope Mould to the Vehicle's Rear End

Figure 4 shows what the rope mould should look like. Since the rope mould is mounted onto the body, drill mounting holes into the rope mould as well as into the body of the vehicle.

a) Step 1 – Drilling the mounting holes into the Rope Mould

Place the rope mould on a surface where it can be drilled and mark off the locations of where the holes must be drilled. After marking off, drill the holes into rope mould. This is done using a hand drill and a 4.8mm drill bit.

You should drill four evenly spaced holes along the length of the rope mould as shown in Figure 5 below.

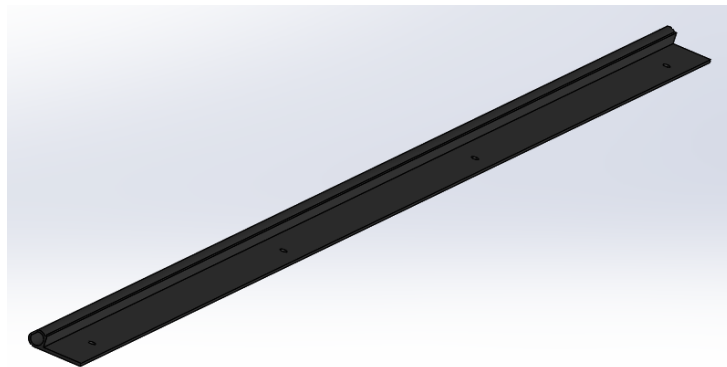


Figure 4: Rope Mould

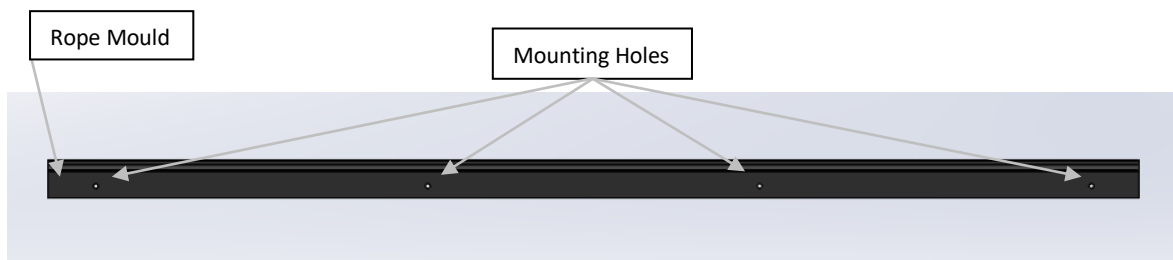


Figure 5: Top View Mounting Hole Positions

b) Step 2 – Drilling the mounting holes into the Vehicle

Place the rope mould on the vehicle in position and drill the mounting holes into the vehicle using the rope mould holes as a guide as shown in Figure 6 below. This is done using a hand drill and a 4.8mm drill bit.

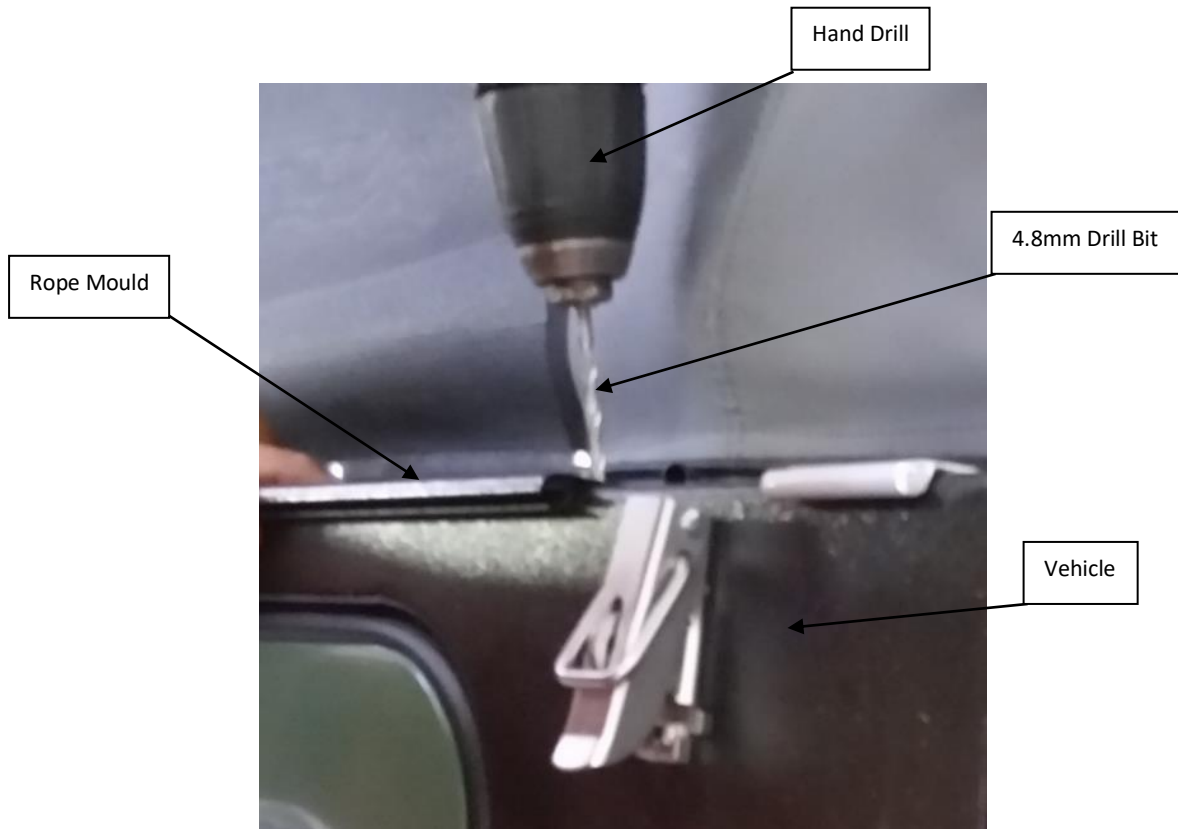


Figure 6: Drilling Mounting Holes in the Vehicle

c) Step 3 – Silicone application to the rope mould

Before fixing the rope mould to the vehicle, silicone must be applied to the surface, using Black silicone or Sikaflex as shown in Figure 7. The silicone must be applied thoroughly to the rope mould before placing it onto the vehicle.

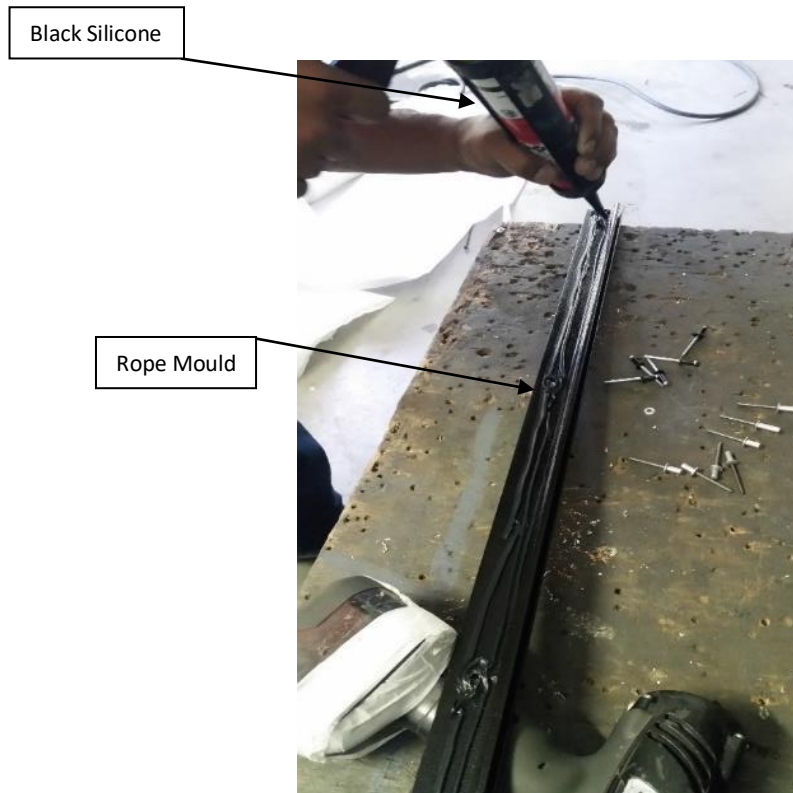


Figure 7: Applying Silicone to Rope Mould

d) Step 4 – Riveting the rope mould to the vehicle

Once all the mounting holes has been drilled into the vehicle and the rope mould, the rope mould can then be riveted onto the vehicle. Figure 8 shows how the rope mould is fixed onto the vehicle.



Figure 8: Rope Mould mounted onto Vehicle

3. Fitting the Velcro Strap to the Awning

The Velcro strap is used to stick the gutter canvas onto from the rope mould. Once the awning is fully opened on the vehicle, it is fixed to the last awning swing arm, which is the 25x25 square tube shown in Figure 9.

a) Step 1 – Removing the white plastic strip from the Velcro strap

Before the Velcro strap is placed onto the awning arm, the white plastic strip must be removed from the Velcro strap so that the adhesive is exposed. Remove the white plastic strip while placing it onto the awning arm as shown in Figure 9 below.



Figure 9: Removing White Plastic Strip

b) Step 2 – Riveting the Velcro strip to the awning arm

Since the adhesive of the Velcro strip doesn't last very long, drill 5 holes evenly spaced along the length of the 25x25 square tube awning arm and through the Velcro strip. Then rivet the strip to the awning using 5 x 4.8X10AS black rivets and a rivet gun.



Figure 10: Velcro Strip Fitted to Awning Arm

4. Fitting the Awning Gutter to the rope mould

The rope running through the awning gutter should be inserted into the rope mould as shown Figure 11 below. The awning gutter rope is pulled right through the entire rope mould as shown in Figure 12 below.

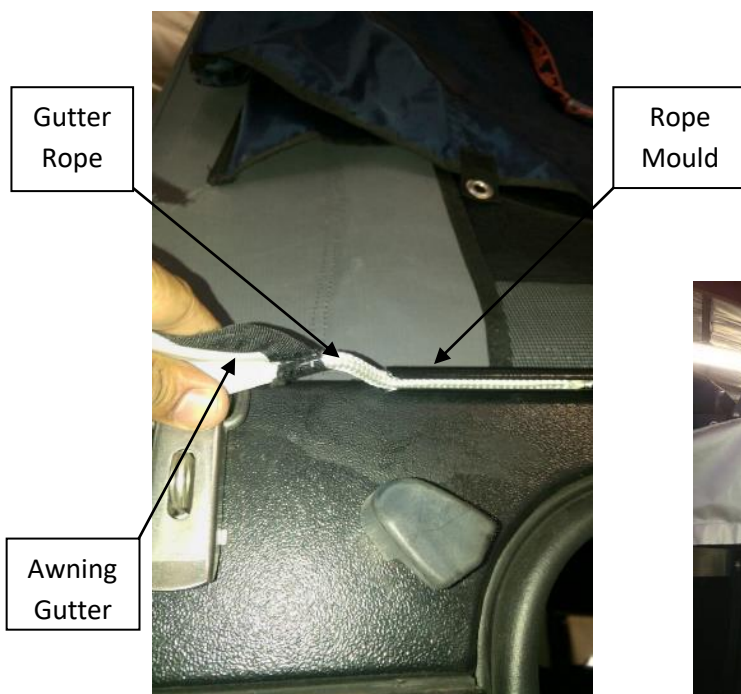


Figure 11: Sliding Gutter Rope into Rope Mould



Figure 12: Gutter Installed into Rope Mould

5. Stick the Awning Gutter to the Awning Arm

This is done by sticking the Velcro on the awning gutter to the Velcro strip on the awning arm as shown in Figure 13 below.

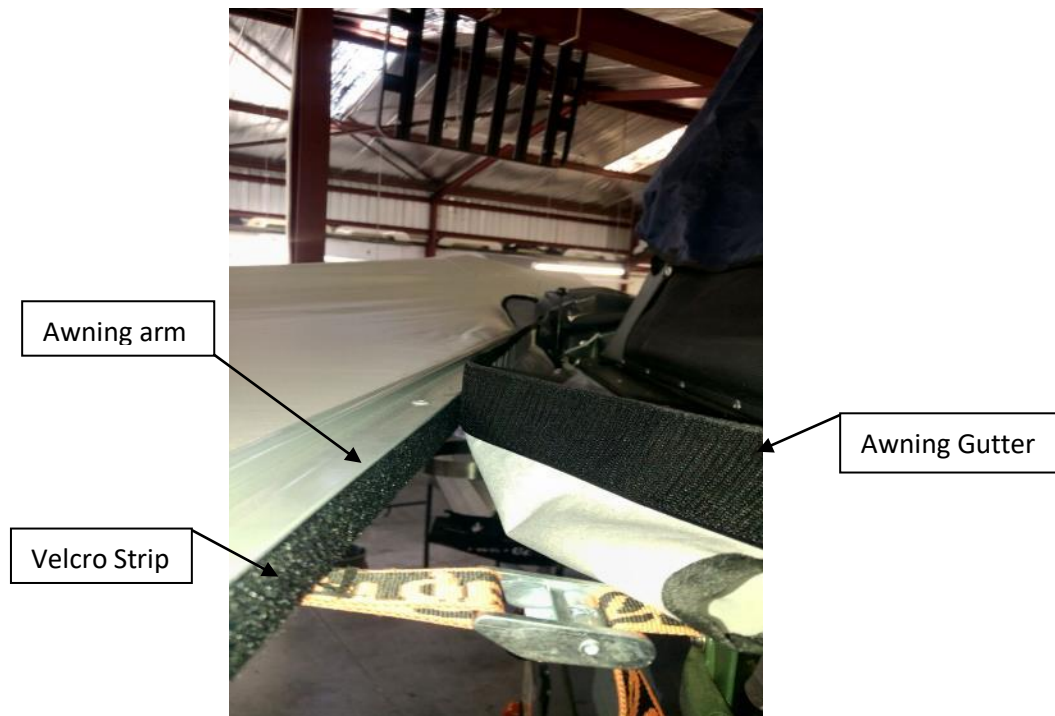


Figure 13: Sticking Awning Gutter to Awning Arm

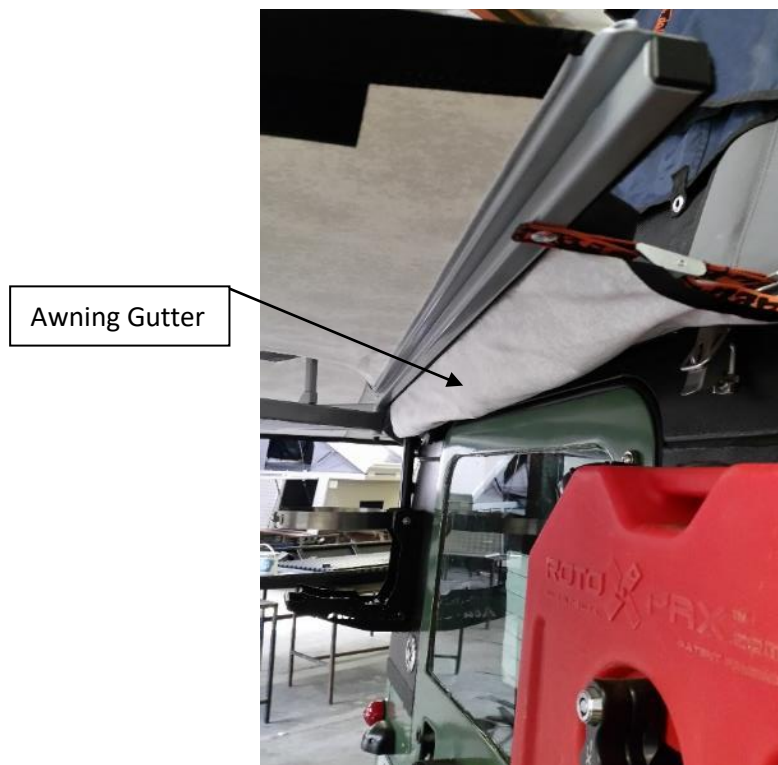


Figure 14: Awning Gutter Fully Installed