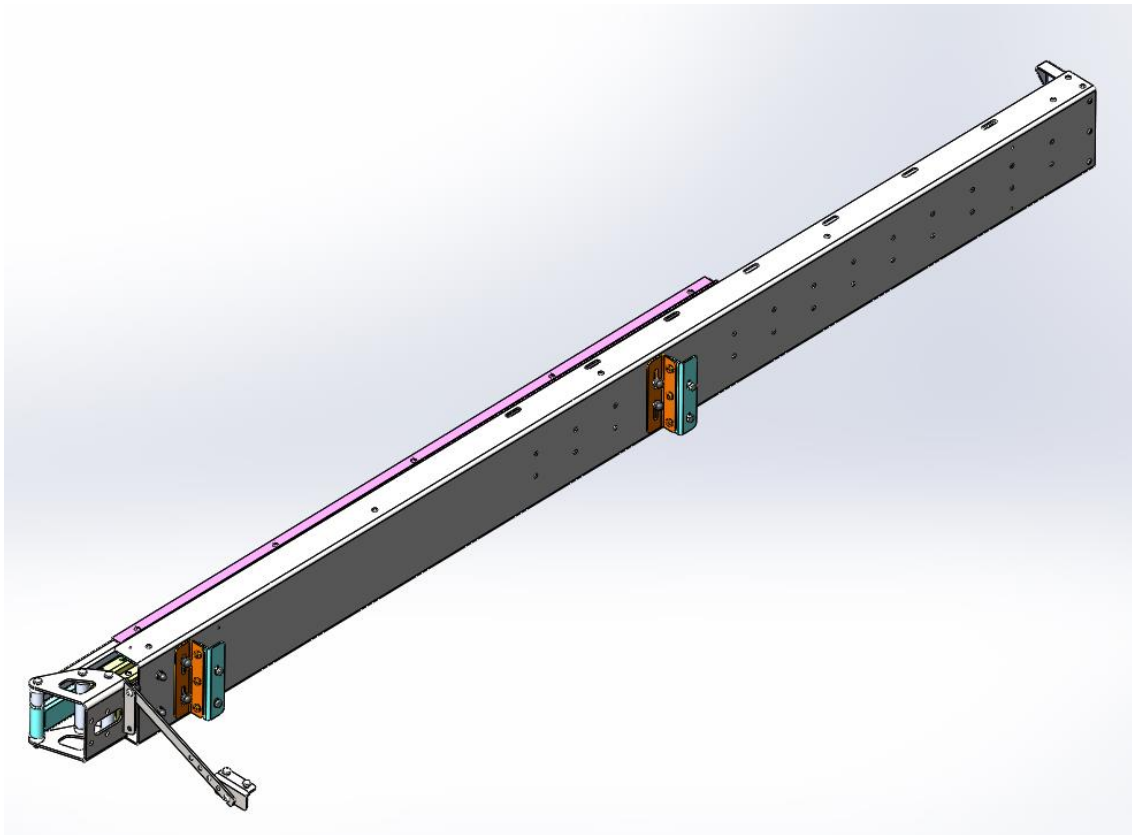




## Universal Awning Mount Fitment Instructions



## **1. Universal Awning Mount – Tools, Fasteners & Materials**

The tables below show the equipment, i.e. tools, fasteners, hardware and consumables required to start and finish the fitment of the universal awning mount.

### **Hardware Supplied with Universal Awning mount kit:**

<b>ITEM NO.</b>	<b>PART NUMBER</b>	<b>DESCRIPTION</b>	<b>QTY.</b>
1	AW-1-001	AWNING MOUNTING BRACKET	2
2	AW-1-002	AWNING MOUNT ANGLE BRACKET	2
3	AW-1-B003	SUPPORT BRACKET	1
4	AW-1-B004	STAY ARM	1
5	MOUNTING BRACKET 01	MOUNTING BRACKET 01	1
6	M8x20 Button head screw	M8x20 Button head cap screw	8
7	M8x20 HEX BOLT	M8x20 HEX BOLT	6
8	M8 NYLOC NUT	M8 NYLOC NUT	20
9	M8 FLAT WASHER	M8 FLAT WASHER	20
10	M8 Plastic Nut Cap	M8 Plastic Nut Cap	20

### **1.1 Tools required to fit Universal Awning mount kit:**

<b><u>TOOL</u></b>	<b><u>PURPOSE</u></b>
Allen Key	Fastening various bolts
13mm spanner	Spanner to tighten various bolts
13mm socket	Fastening various bolts
Ratchet	Fastening various bolts

## **Part Identification:**

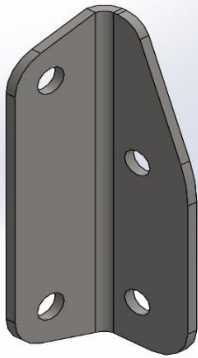


Figure 1: AW-1-B003

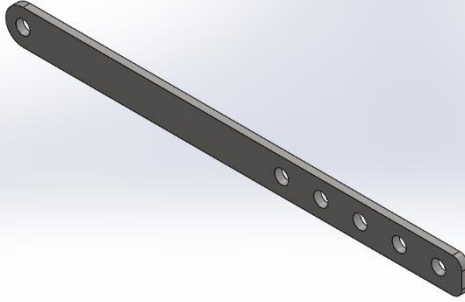


Figure 2: AW-1-B004

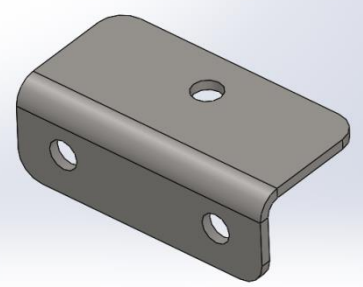


Figure 3: Mounting  
Bracket 01

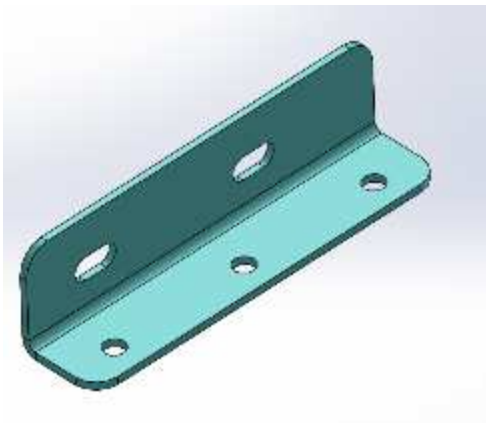


Figure 4: Bracket **AW-1-001**

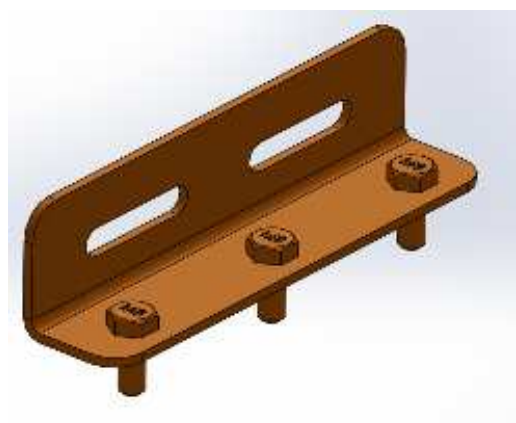


Figure 5: Bracket **AW-1-002**

## **2. Fitting the Universal Awning mount kit:**

**Step 1: Assemble the 2 x AW-1-002 and 2 x AW-1-001 as shown below:**

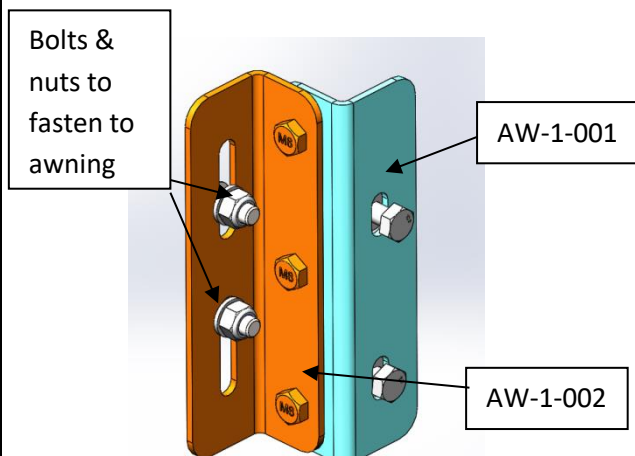


Figure 6: AW-1-002 and AW-1-001

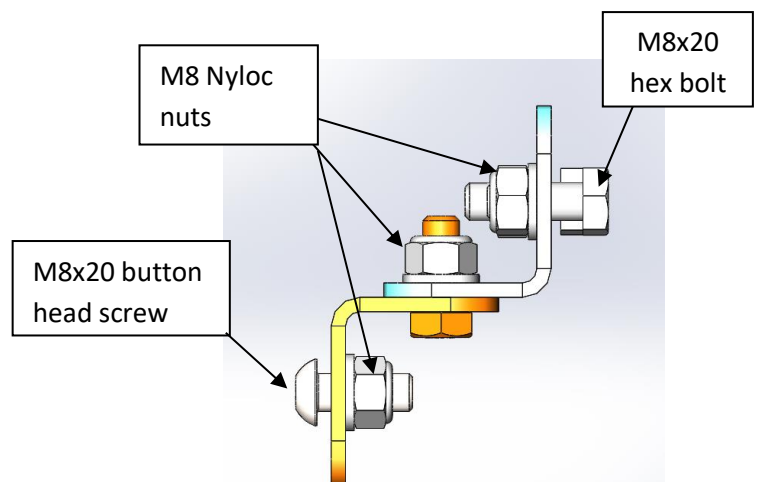


Figure 7: AW-1-002 and AW-1-001 Top

## **Step 2: Fit 2 x Assembled AW-1-002 & AW-1-001 and AW-1-B003 to awning**

The following holes on the awning (circled in red) should be used to fasten the bracket AW-1-B003 and one AW-1-002 bracket to awning.

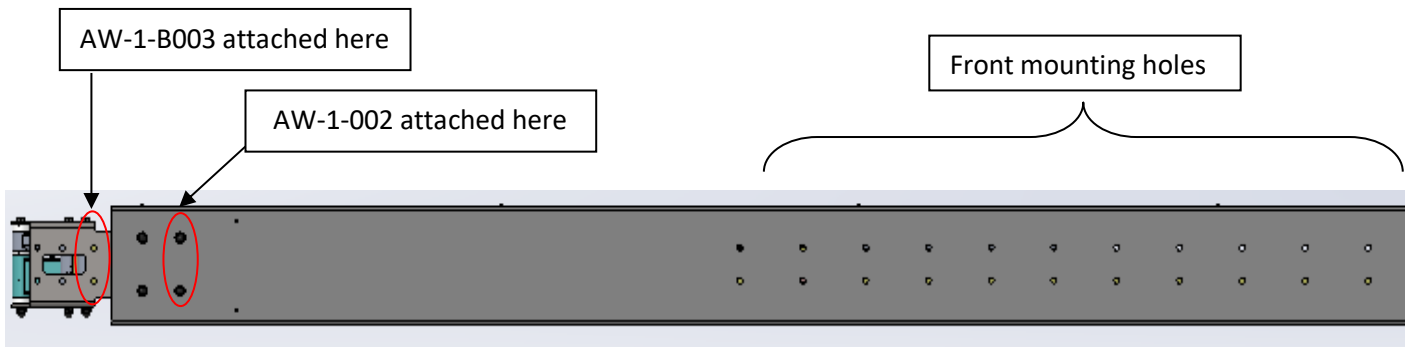


Figure 8: Rear View of Awning

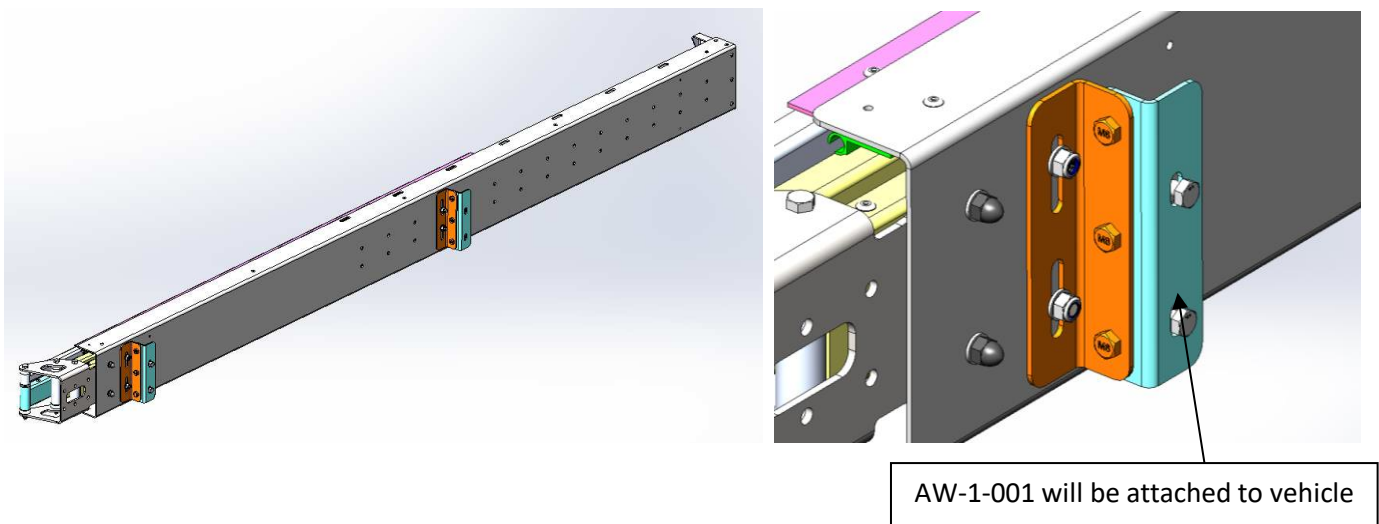
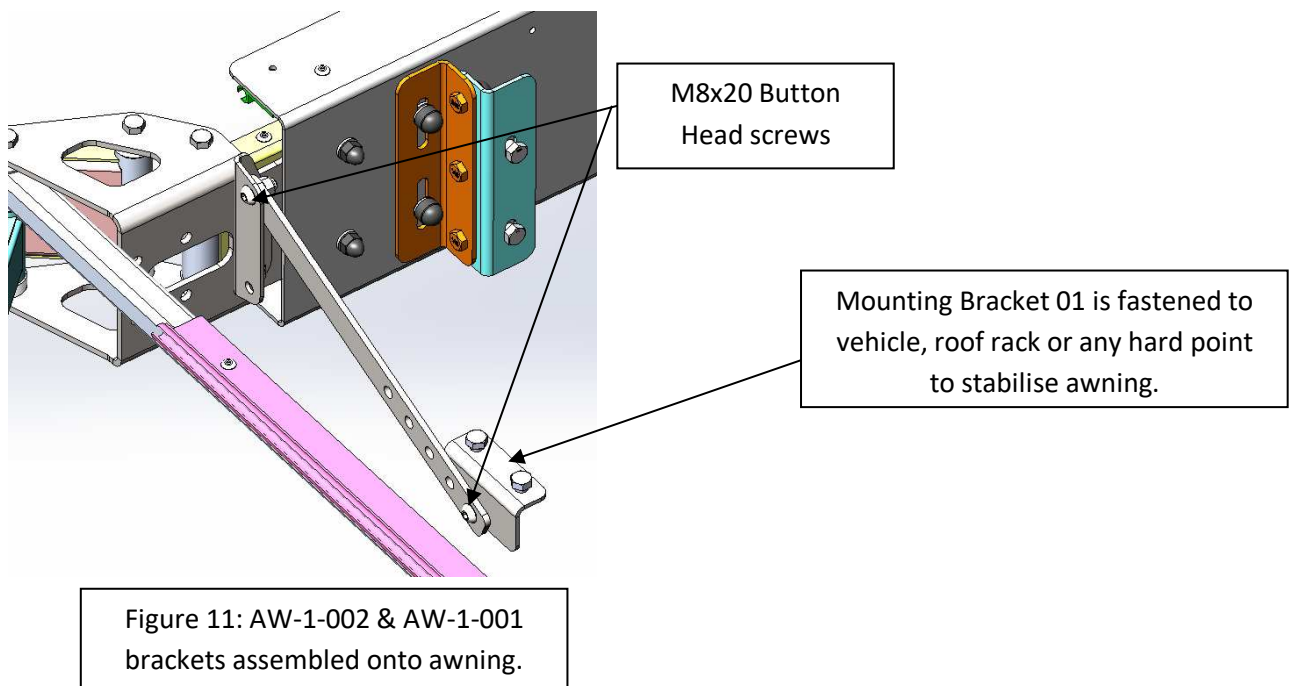
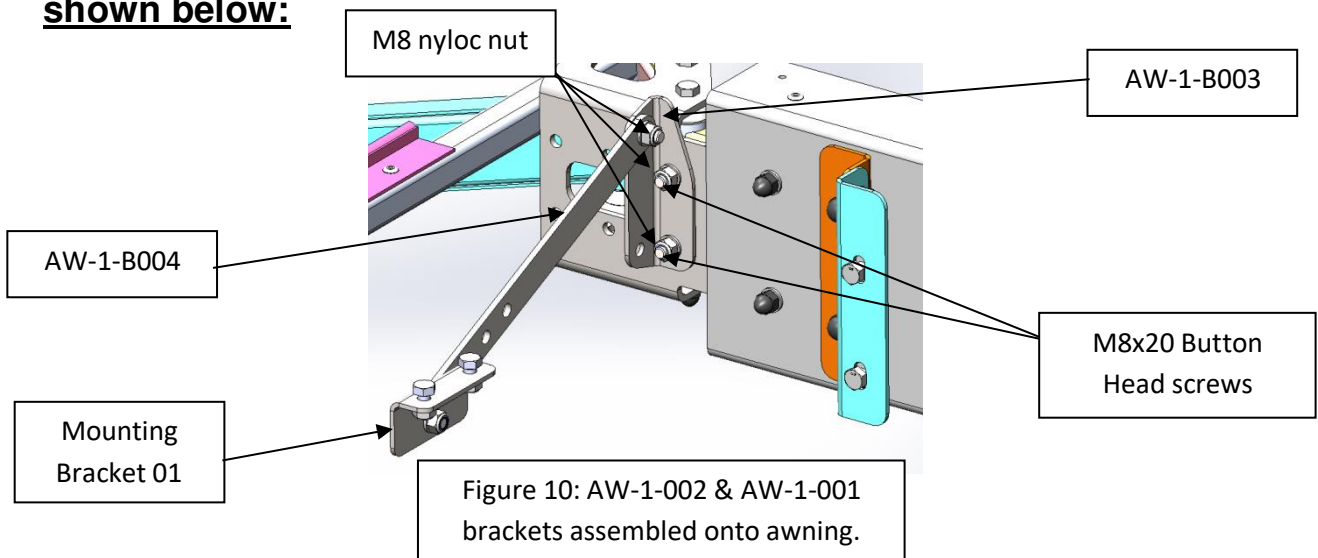


Figure 9: AW-1-002 & AW-1-001 brackets assembled onto awning.

The awning is now ready to be mounted onto the vehicle.

**Step 3: Fit AW-1-B003, AW-1-B004 and Mounting Bracket 01 as shown below:**



**Step 4: Fit plastic nut caps to all nyloc nuts as shown below:**

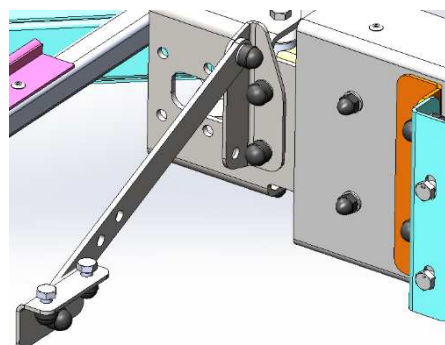


Figure 12: Plastic Nut caps fitted