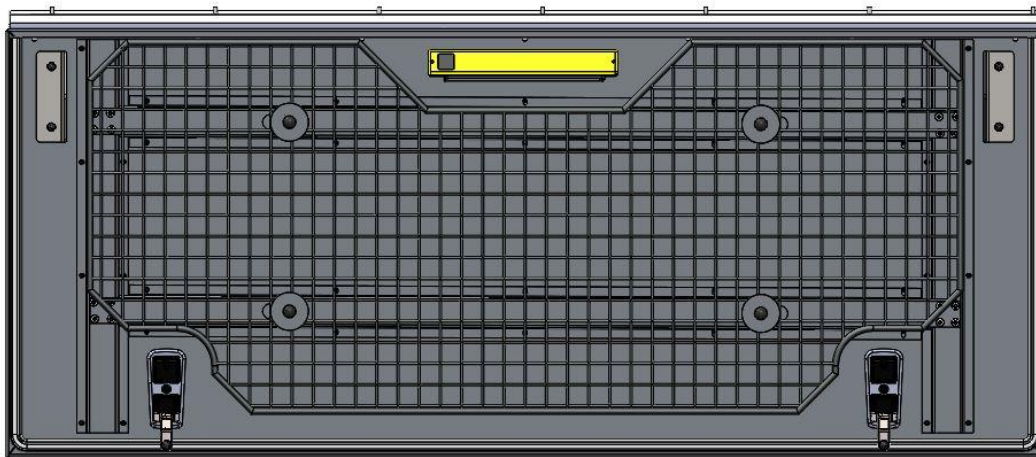


FITMENT INSTRUCTIONS

Alu-Cab™



Canopy Camper - Side Door Molle Grid CC-A-SID-GRID

1. S

All rights reserved. No part of this document may be reproduced, translated, stored in a retrieval system, or transmitted, in any form or by any means, electronic, mechanical, photocopying, recording or otherwise, without prior written permission of the owner.

Review all instructions information carefully before installation.

Any damages, direct or incidental to the installer and/or property due to incorrect installation of any parts are the responsibility of the installer. Due to the various applications and fitment options available, the responsibility lies with the user to ensure all mounting points are secure and tight before every trip. If unsure, consult with your Distributor regarding the operations of our products.

Users are advised to be mindful of the load they are carrying and drive in accordance with road conditions.

DISCLAIMER

Alu-Cab

Side Door Molle Grid Fitment – Tools, Fasteners & Materials

The tables below show the equipment, i.e. tools and fasteners required to fit the Side Door Molle Grid to a Canopy Camper.

1.1. Tools & Items Required:

TOOLS
Ratchet
13mm Socket or
13mm Spanner
Flat Head Screwdriver

1.2 Fasteners supplied: (Included with Side Door Molle Grid)

ITEM	QTY
M8 X 30 CUP SQUARE BOLT	4
M8 FLAT WASHER	4
M8 NYLOC NUT	4
M8 PLASTIC NUT CAP	4

1.3 Hardware Required: (Included with Side Door Molle Grid)

ITEM	DESCRIPTION	QTY
162-SID-DOR-GRID-SPA-WAS-01	SIDE DOOR GRID SPACER WASHER	8
162-SID-DOR-GRID-ASSY-01	CANOPY CAMPER SIDE DOOR MOLLE GRID	1
162-SID-DOR-GRID-SPA-WAS-CUP-01	SIDE DOOR SQUARE GRID SPACER WASHER	4
GS-400-400N	GAS STAYS -4044- 400LG - 400N	2

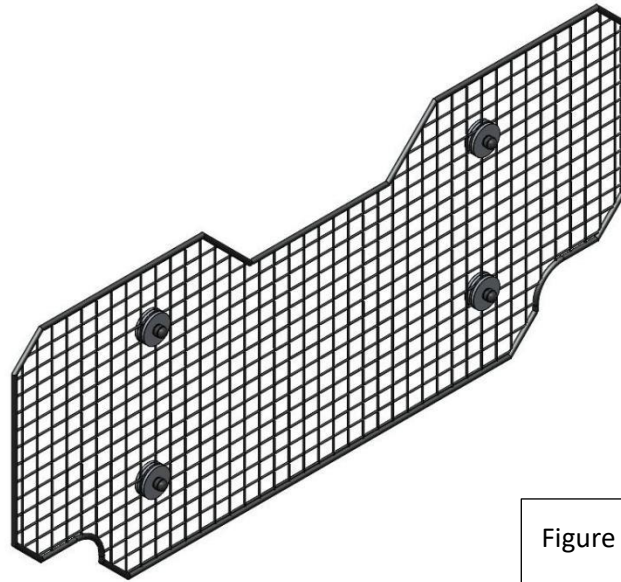
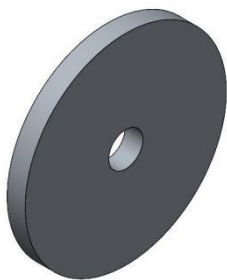
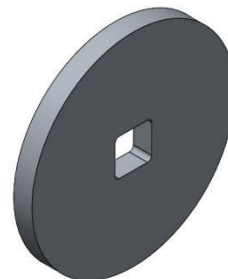


Figure 1.162-SID-DOR-
GRID-ASSY-01



X8

Fig 2. 162-SID-DOR-
GRID-SPA-WAS-01



X4

Fig 3. 162-SID-
DOR-GRID-SPA-
WAS-CUP-01

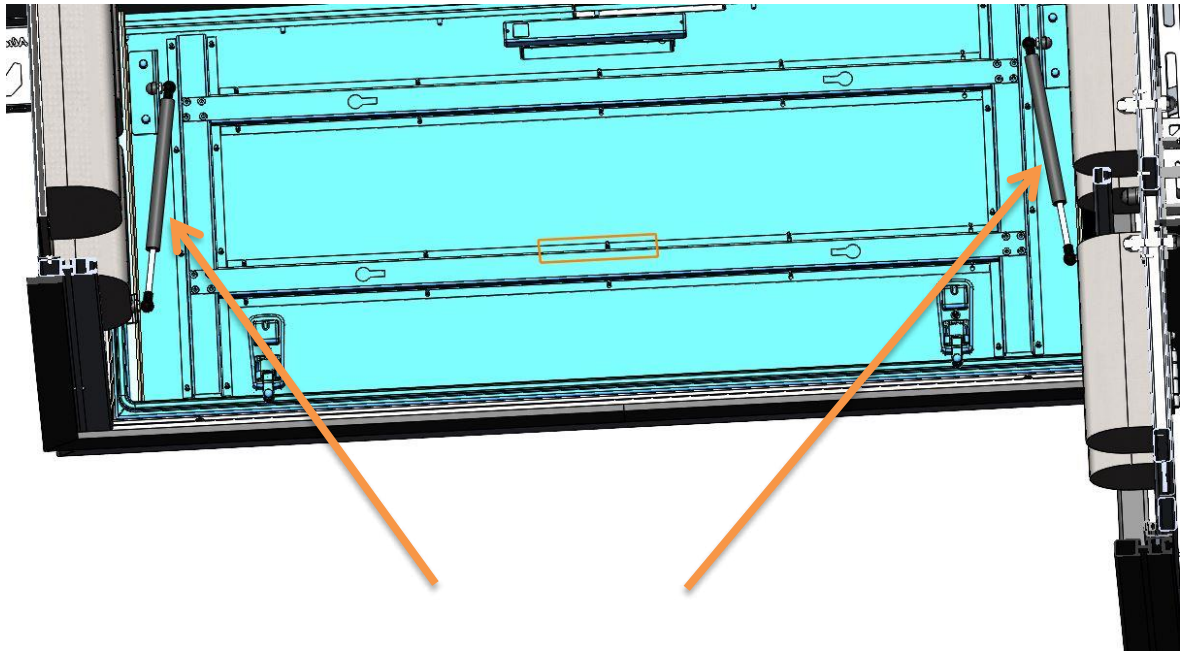


WARNING

Always wear appropriate PPE (Personal protection equipment) when fitting this product. Although the mounting kit is designed to be DIY, if you have any doubts or concerns, contact an accredited fitment centre to carry out the work. Alu-Cab will not be liable for any injury to persons, and/or damage to products and/or vehicles.

2. Gas Strut Replacement

The first step in the installation is to replace the standard Side Door Gas Struts with the supplied up-rated 400N gas struts.



Firstly, take note of the gas strut orientation on the doors, and ensure to install the new gas struts the same. Remove the retaining clip on the gas strut ends using a flat head screwdriver as shown below to release the gas struts from the doors.





Now the gas strut ends can be transferred from the old struts to the new struts by unscrewing them off of the old and screwing them onto the new.

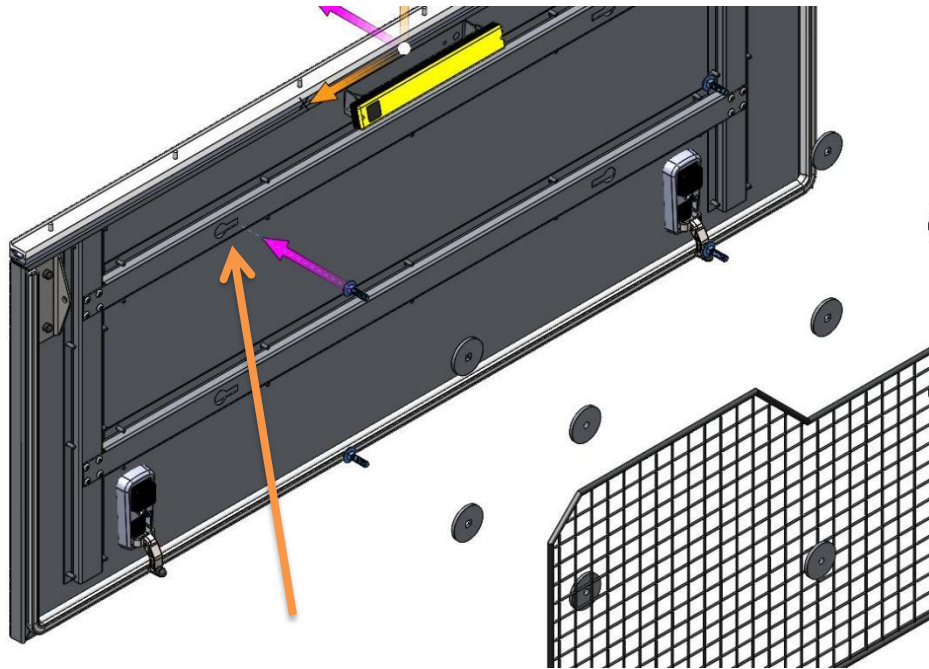
You can now install the gas struts to the camper and re-insert the retaining clips to secure them.

3. Mounting the Side Door Molle Grid

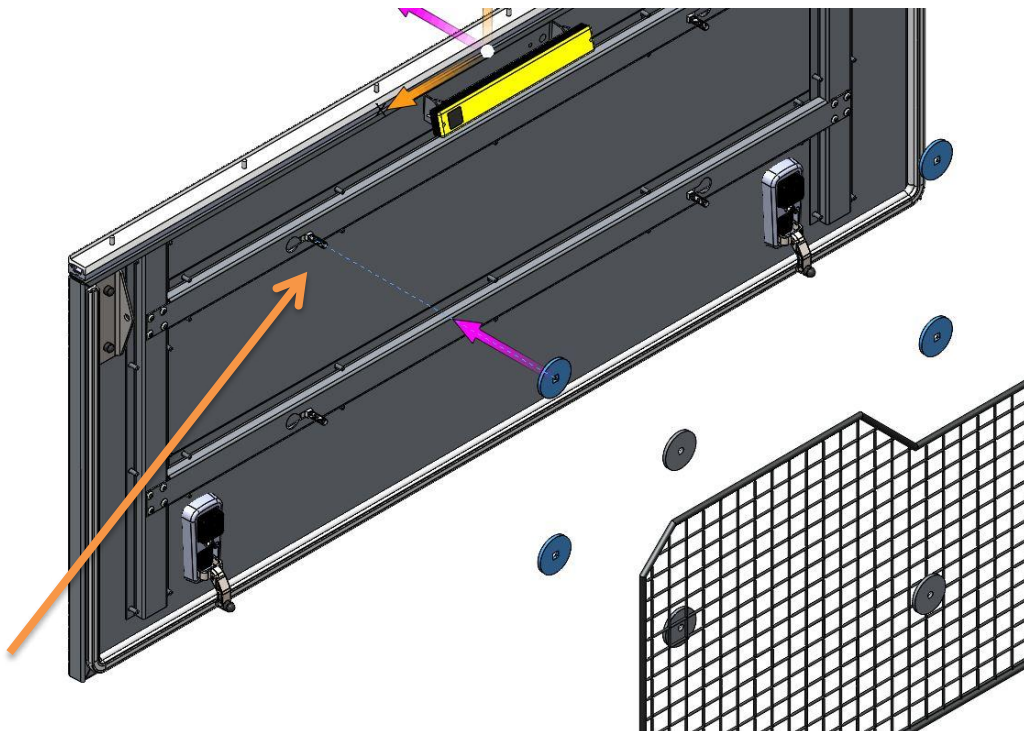
With the gas struts installed, the Side Door Molle Grid can now be mounted to the side door/s.

Please see the following steps for how to mount the Side Door Molle Grid:

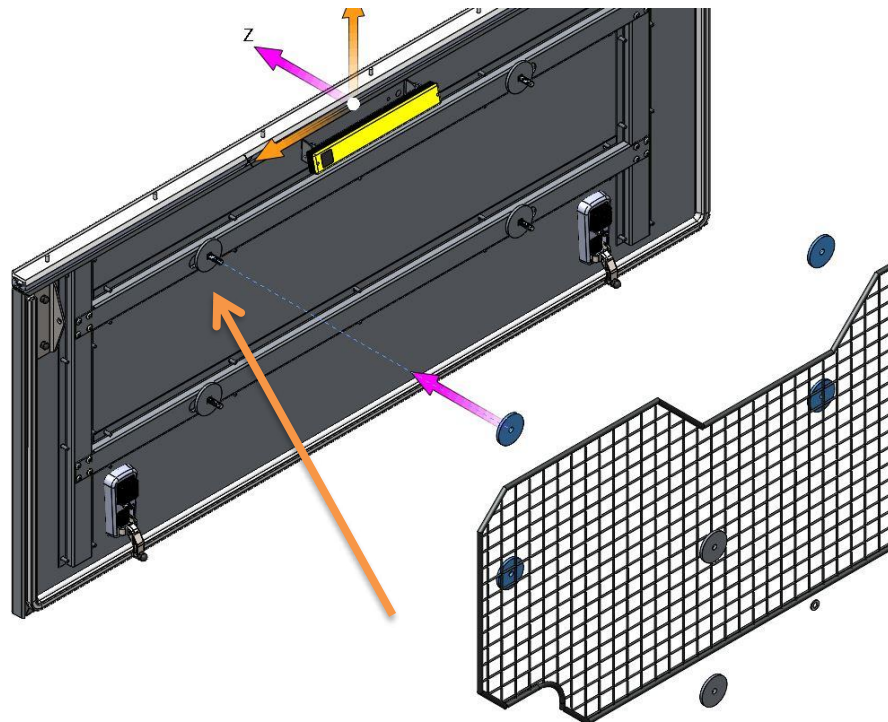
Insert the 4 M8X30 Cup Square into the provided mounting slots in the Canopy Camper Door as shown:



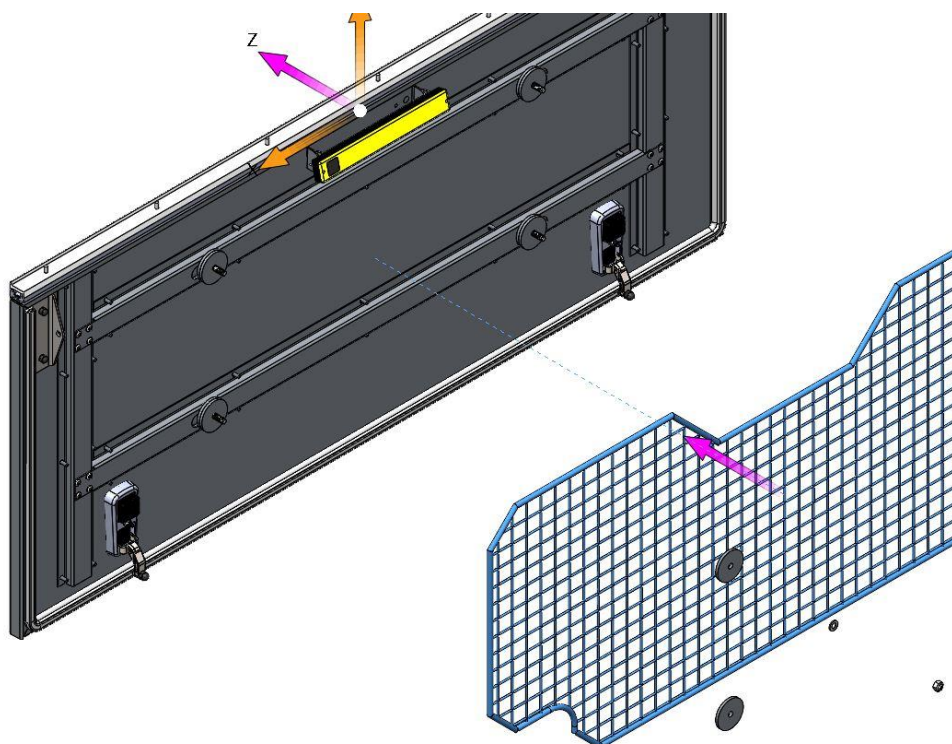
Place a 162-SID-DOR-GRID-SPA-WAS-CUP-01 with the square cut out over each M8X30 Cup Square Bolt:



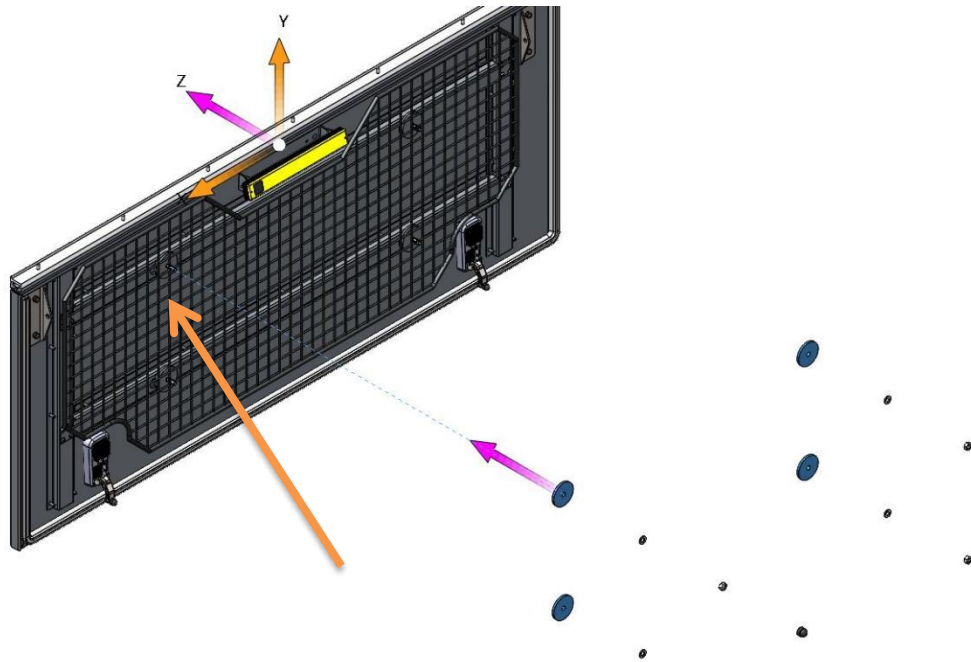
Place a 162-SID-DOR-GRID-SPA-WAS-01 over each M8X30 Cup Square Bolt on top of the 162-SID-DOR-GRID-SPA-WAS-CUP-01:



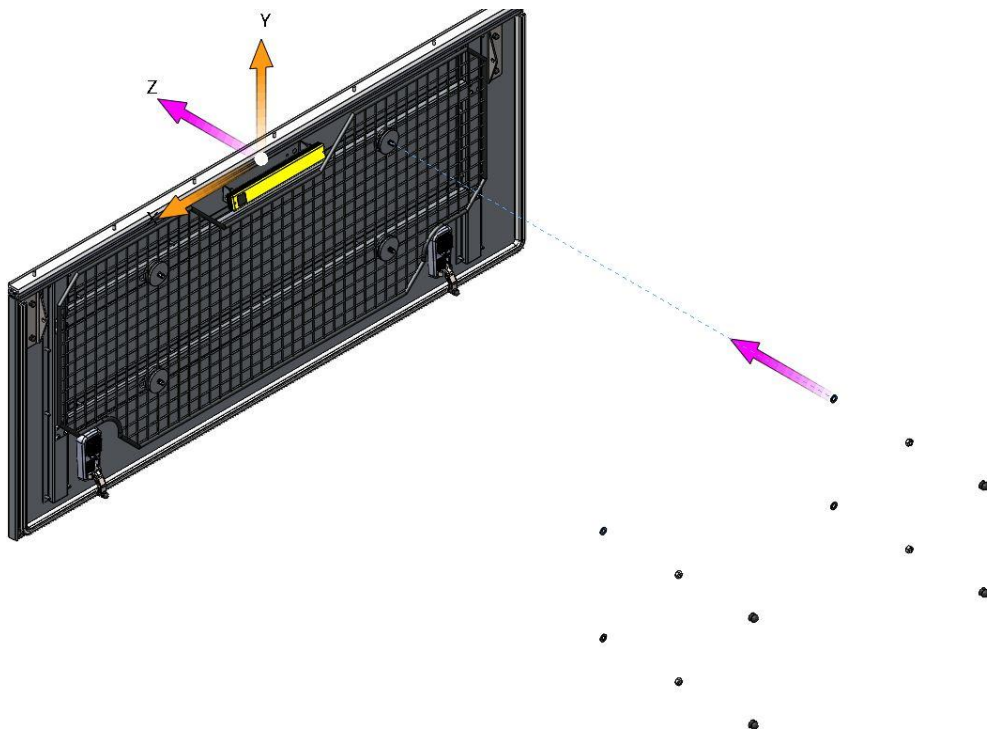
Now position the 162-SID-DOR-GRID-ASSY-01 resting on the M8X30 Cup Square Bolts, make sure to locate the Grid centrally to the M8X30 Cup Square Bolts, while allowing equal spacing and clearance around the doors Push Button Locks and full rotation of the doors light. Make sure the Grid is mounted high enough to clear the Bottom Rebate on the Canopy Camper and low enough to allow full articulation of the Swivel Light on the door:



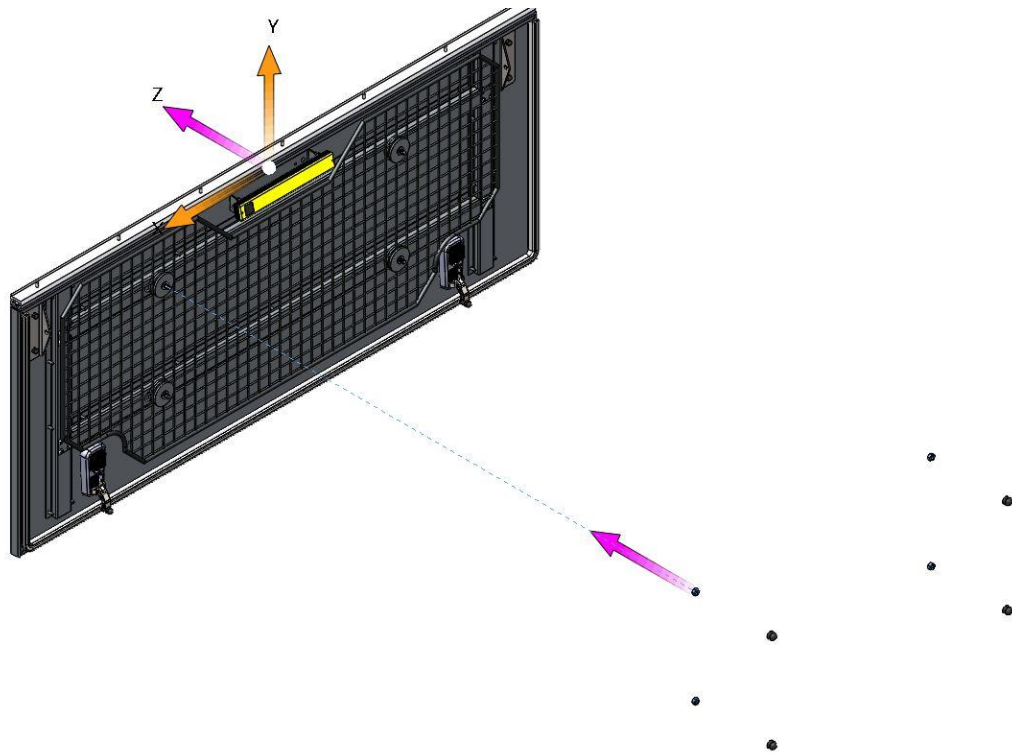
Place a 162-SID-DOR-GRID-SPA-WAS-01 over each M8X30 Cup Square Bolt on top of the Grid:



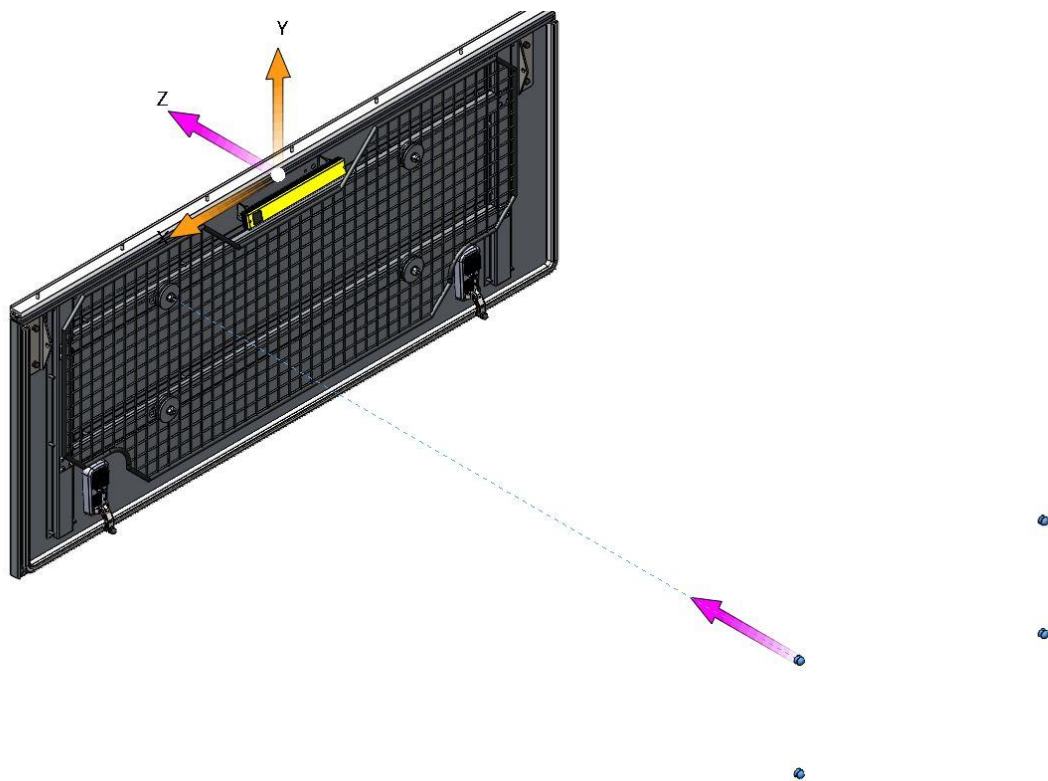
Place a M8 Flat Washer over each M8X30 Cup Square Bolt on top of each 162-SID-DOR-GRID-SPA-WAS-01:



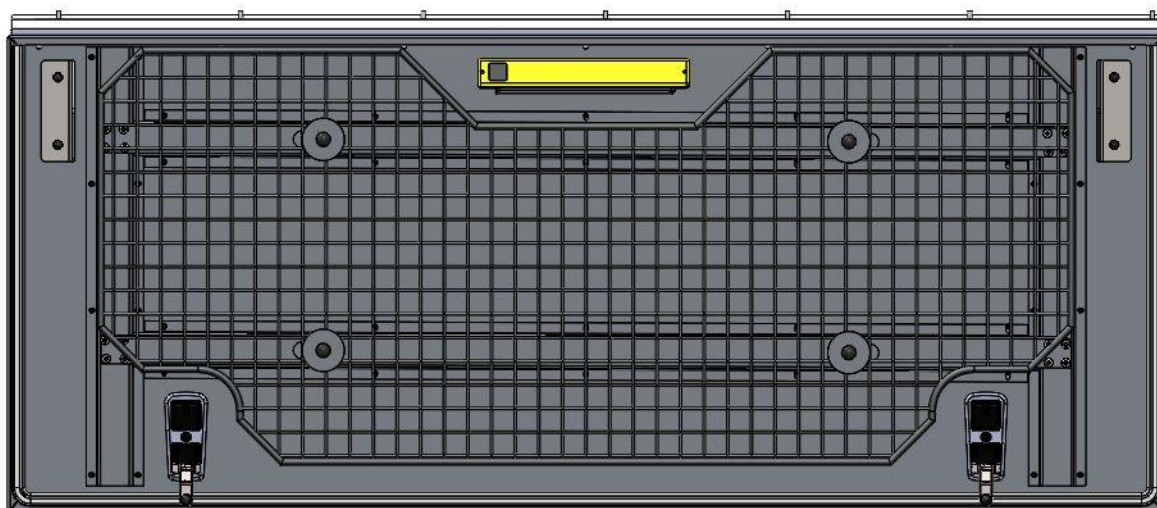
Place a M8 Nyloc Nut over each M8X30 Cup Square Bolt and fasten it securely:



Place a M8 Nut Cap over each M8 Nyloc Nut to complete the assembly:



Your completed assembly should look like this:



Should you experience any problems, please contact us so that we can assist you.

Enquiries: queries@alu-cab.co.za
Tel: +27 21 703 3028