

Side Slide Prep Table Fitment Instructions



1. Prep Table Fitment – Tools, Fasteners & Materials

The tables below show the equipment, i.e. tools, fasteners, hardware and consumables required to start and finish the prep table fitment.

1.1. Tools Required:

<u>TOOL</u>	<u>PURPOSE</u>
<ul style="list-style-type: none">• Drill	Drill mounting holes into prep table frame and vehicle
<ul style="list-style-type: none">• 4.8mm Drill Bit	Drill mounting holes into prep table and vehicle
<ul style="list-style-type: none">• Rivet Gun	Fix rivets to mounting parts
<ul style="list-style-type: none">• Crimping tool	Crimps wires together

1.2. Fasteners required: (Included with canopy)

<u>ITEM</u>	<u>QUANTITY</u>
<ul style="list-style-type: none">• 4.8X15AS Blind Rivets	4 off
<ul style="list-style-type: none">• 4.8X10AS Black Rivets	5 off
<ul style="list-style-type: none">• Wire crimps	4 off

1.3. Hardware Required: (Included with canopy)

<u>ITEM</u>	<u>PURPOSE</u>
<ul style="list-style-type: none">• Prep Table Frame	1 off
<ul style="list-style-type: none">• Sliding Extrusion	1 off
<ul style="list-style-type: none">• Prep Table	1 off

1.4. Consumables Required:

<u>ITEM</u>	<u>PURPOSE</u>
<ul style="list-style-type: none">• Turpentine	Cleaning purposes
<ul style="list-style-type: none">• Cloth	Cleaning purposes
<ul style="list-style-type: none">• Black silicone or Sikaflex	Apply to the sliding extrusion when fixing it onto the vehicle

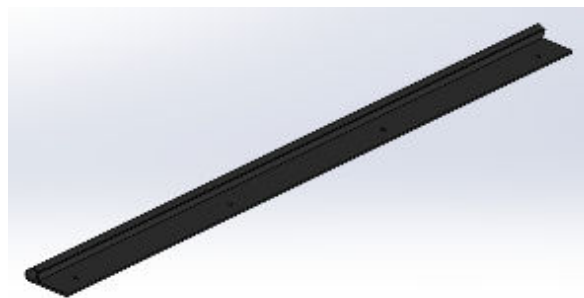


Figure 1: Sliding Extrusion



Figure 2: Prep Table Frame



Figure 3: Prep Table

2. Setting up the Prep Table onto the Vehicle

The prep table slides into the rope mould that should be mounted onto the vehicle.

2.1. Mounting the Rope Mould to the Vehicle

a) Step 1 – Drilling the mounting holes into the Rope Mould

Use a drill and a 4.8mm drill bit to drill 3 holes evenly spaced along the length of the rope mould as shown in Figure 4 below.

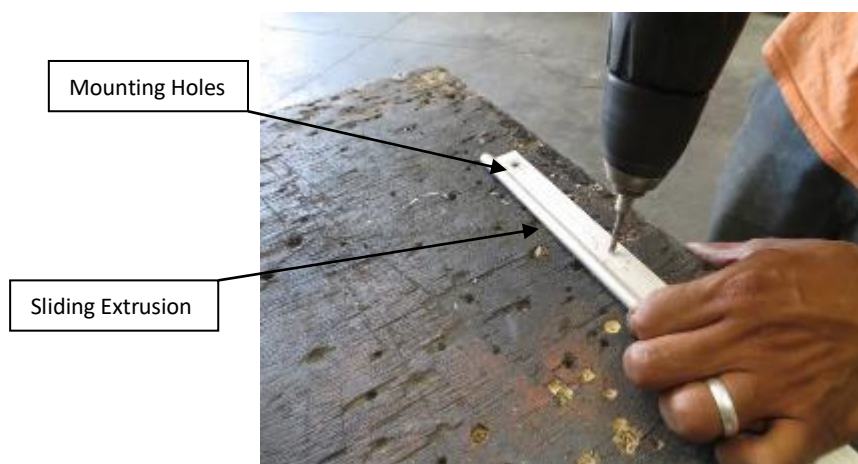


Figure 4: Drilling Mounting Holes into rope mould

b) Step 2 – Drilling the mounting holes into the vehicle

Place the rope mould in the mounting position and use as a guide to drill mounting holes into the vehicle as shown in Figure 5 below. Use the 4.8mm drill bit.



Figure 5: Drilling Mounting Holes into vehicle

c) Step 3 – Apply Sikaflex to the mounting surface

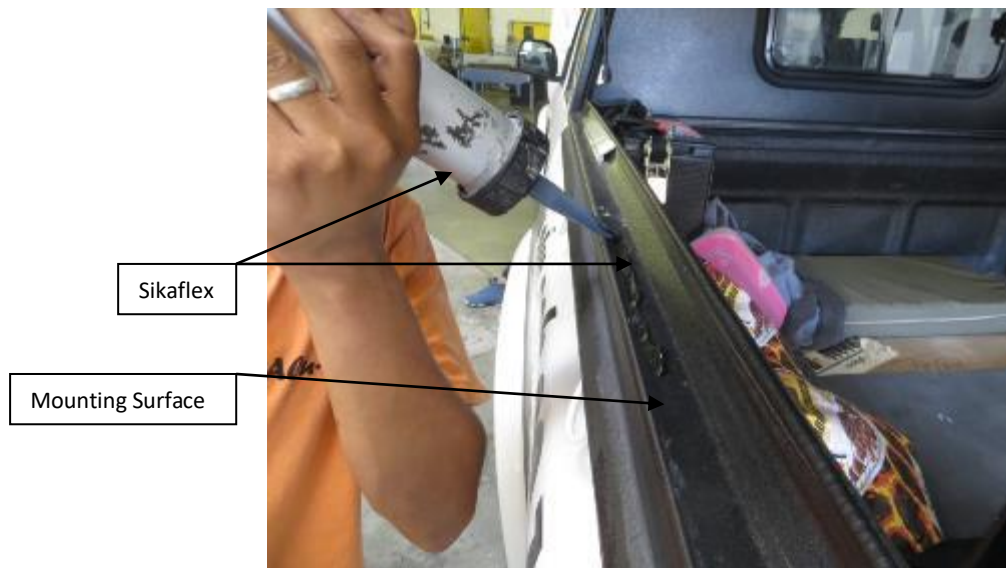


Figure 6: Applying Silicone/Sikaflex to the Surface

d) Step 4 – Riveting the rope mould to the mounting surface

Place the sliding extrusion in the mounting position, insert rivets and rivet it to the surface using a rivet gun and 4.8x10AS rivets.



Figure 7: Riveting rope mould to surface

2.2. Sliding prep table into sliding extrusion

Once the sliding extrusion is fixed, the prep table slides into it as shown in Figure 8 and Figure 9.



Figure 8: Sliding Prep Table into Rope Mould

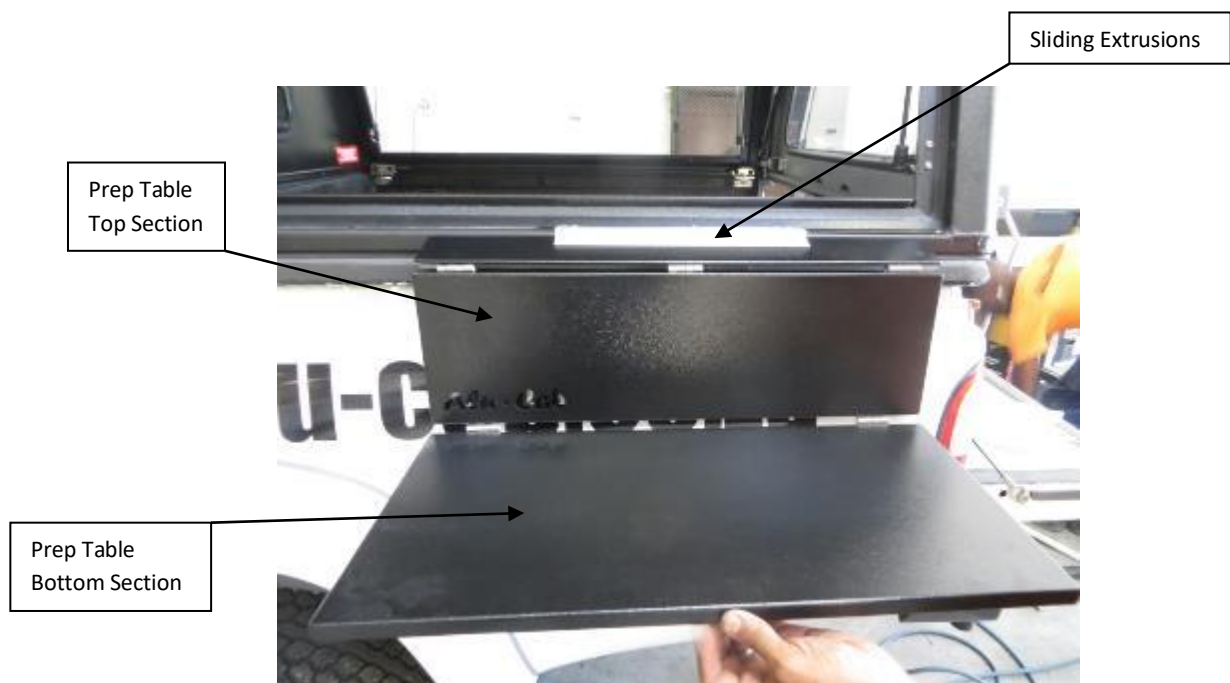


Figure 9: Prep Table in setup position

2.3. Installing prep table wire supports

- a) Step 1 – Slide wire into 1 side of the crimper



Figure 10: Inserting wire into 1 side of crimper

- b) Step 2 - Fold the wire and insert into the other side of the crimper



Figure 11: Inserting the wire into other side of crimper

c) Step 3 - Scrimp wires together using a crimping tool

Before crimping the wires together, fit the wire fold over the 4.8x15 flange rivet and adjust the crimper to have a close fit on the rivet.



Figure 12: Adjusting Crimper for a close fit



Figure 13: Crimping wires together

d) Step 4 – Rivet wire supports to the prep table top section

Insert 4.8x15 flange rivet into wire fold, then insert into pre-drilled holes located in the top section of the prep table as shown in Figure 11 above and rivet the wire support to the prep table.



Figure 14: Rivet Top Wire Support

e) Step 5 – Adjusting and crimping wire supports to prep table bottom section

Adjust the length of the wire support before crimping it to keep the prep table bottom section 90 degrees to the top section when table unfolds. Insert 4.8x15 flange rivet into mounting hole.



Figure 15: Adjusted Wire Support

- f) Step 6 - Use wire crimping method in step 3 for the other end of the wire support.



Figure 16: Crimping other end of wire support

- g) Step 7 – Rivet wire support to Prep Table bottom section



Figure 17: Rivet bottom wire support



Figure 18: Prep Table setup complete

3. Installing prep table frame for table storage

a) Step 1 – Measure mounting holes into frame

Measure hole positions on the frame as shown in Figure 18. This must be done for each corner of the frame.

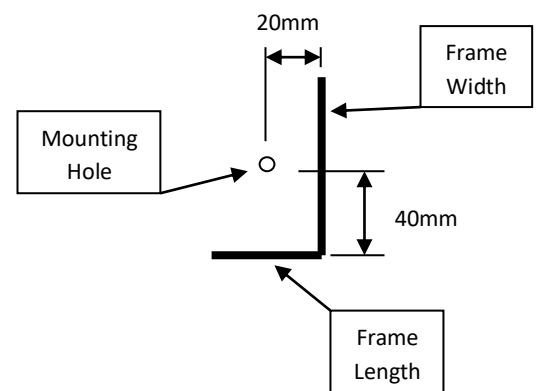


Figure 19: Measuring mounting holes on the frame

b) Step 2 – Drill the mounting holes through the frame

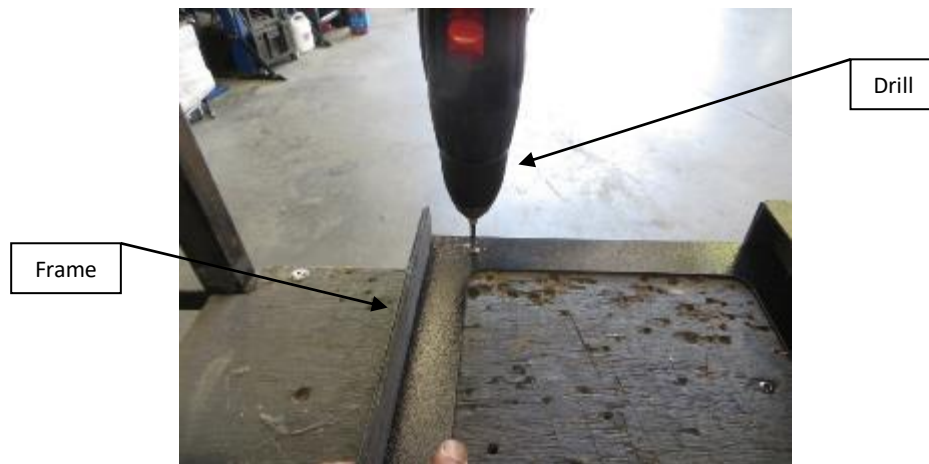


Figure 20: Drilling mounting holes on the frame

c) Step 3 – Mark off holes on the vehicle mounting surface

Place the frame in the mounting position and mark off corresponding holes onto the vehicle surface

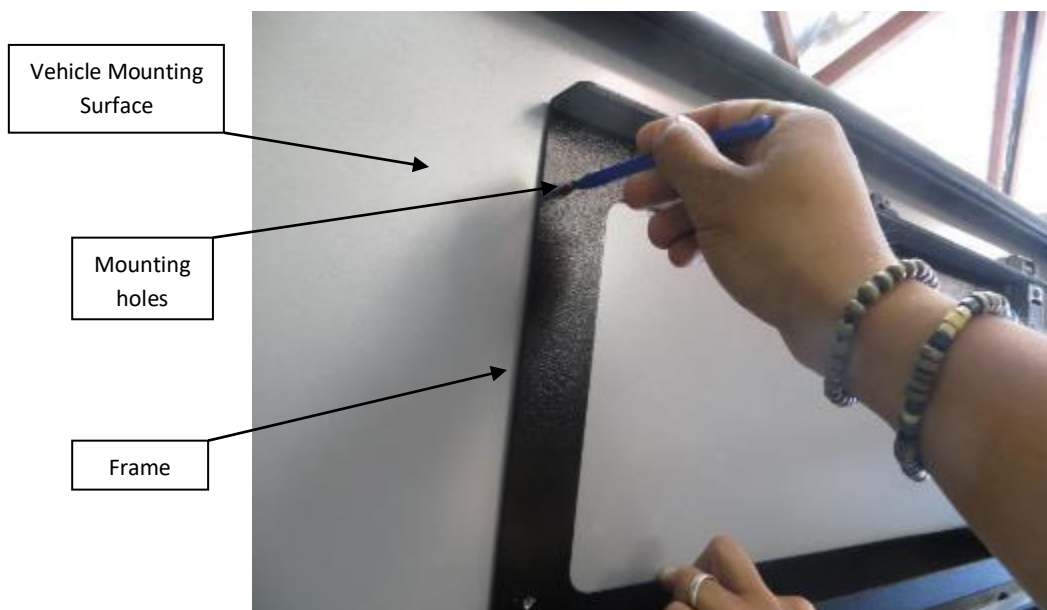


Figure 21: Marking off mounting holes

d) Step 4 – Drilling mounting holes into vehicle surface

Drill the mark off points using a drill and 4.8mm drill bit.

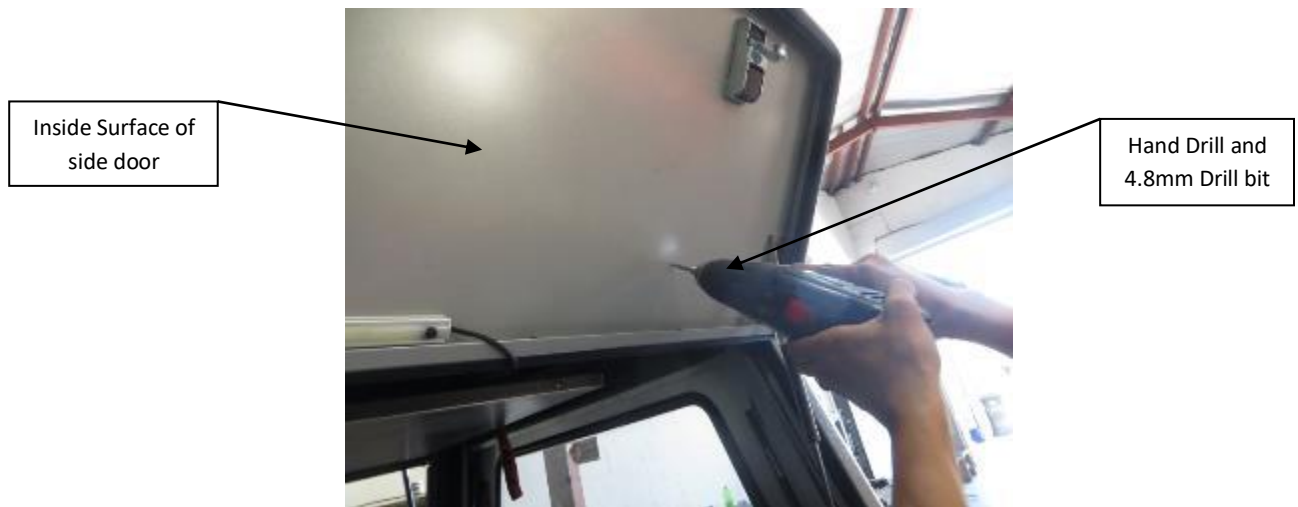


Figure 22: Drill mounting holes into canopy side door

e) Step 4 – Rivet the frame onto the canopy side door

Place the frame in position on the inside of the side door and align the holes. Insert rivets from the outside surface of the side door into the frame mounting holes and rivet it down.

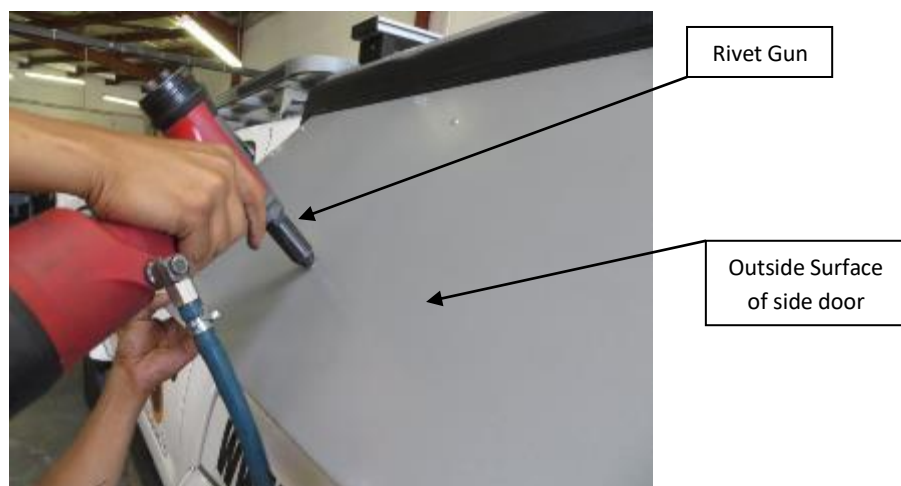


Figure 23: Rivet frame from the outside surface



Figure 24: Prep Table Frame installed

4. Locking Prep Table into Frame

a) Step 1 – Fold table close and Insert into the frame



Figure 25: Inserting Table into frame

b) Step 2 – Lock table into frame

Use the rope at the bottom of the frame to fix the table in place. Swing the rope over the table and hook it onto the top of the frame.



Figure 26: Fixing table in place



Figure 27: Prep Table Storage complete