

FITMENT INSTRUCTIONS

Alu-Cab™



GMC SIERRA 1500 CHEVROLET SILVERADO 1500 5,5ft and 6,5ft Alu-Cabin [2007 TO 2018]

All rights reserved. No part of this document may be reproduced, translated, stored in a retrieval system, or transmitted, in any form or by any means, electronic, mechanical, photocopying, recording or otherwise, without prior written permission of the owner.

Review all instructions information carefully before installation.

Any damages, direct or incidental to the installer and/or property due to incorrect installation of any parts are the responsibility of the installer. Due to the various applications and fitment options available, the responsibility lies with the user to ensure all mounting points are secure and tight before every trip. If unsure, consult with your Distributor regarding the operations of our products.

Users are advised to be mindful of the load they are carrying and drive in accordance with road conditions.

DISCLAIMER

Alu-Cab

Tools and Consumables Required for Installation of the Canopy Camper

1. Required Tools

Tool	Application
Ratchet	Used to tighten down fasteners
13mm Ring Flat Spanner	Used to tighten M8 fasteners
19mm Ring Flat Spanner	Used to tighten M12 fasteners
T-40 Spline Socket	Used to remove OEM Bolts
5mm Allen Key Socket	Used to tighten M8 button-heads
13mm Socket	Used to tighten M8 fasteners
19mm Socket	Used to tighten M12 fasteners
Square Extension	Used with ratchet

2. Consumables

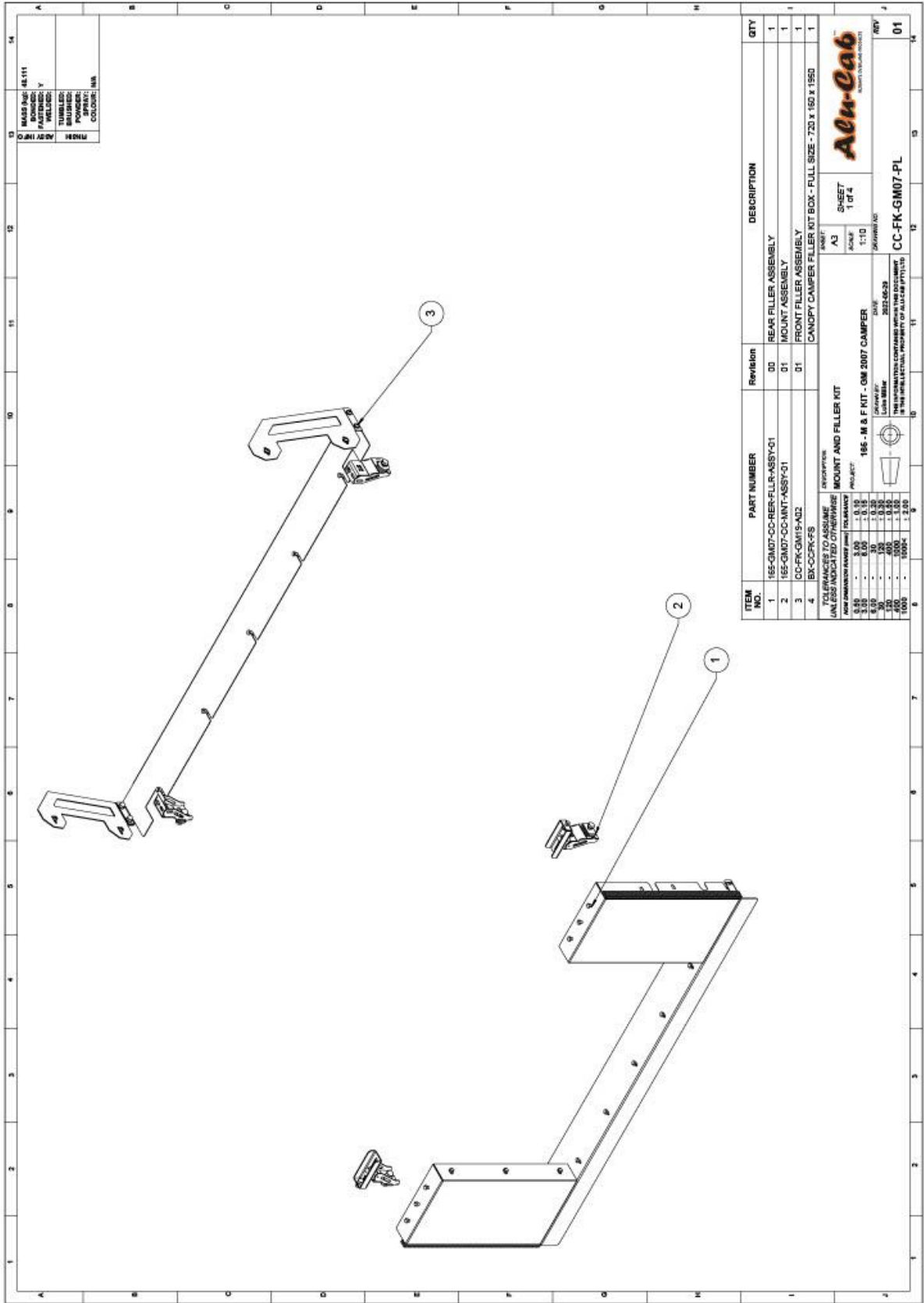
Consumable	Application
Black UV 521 Sikaflex	Used to seal the Canopy Camper once installed
Rags	Used to clean up after install



WARNING

Always wear appropriate PPE (Personal protection equipment) when fitting this product. Although the mounting kit is designed to be DIY, if you have any doubts or concerns, contact an accredited fitment centre to carry out the work. Alu-Cab will not be liable for any injury to persons, and/or damage to products and/or vehicles.

Mounting and filler kit component identification



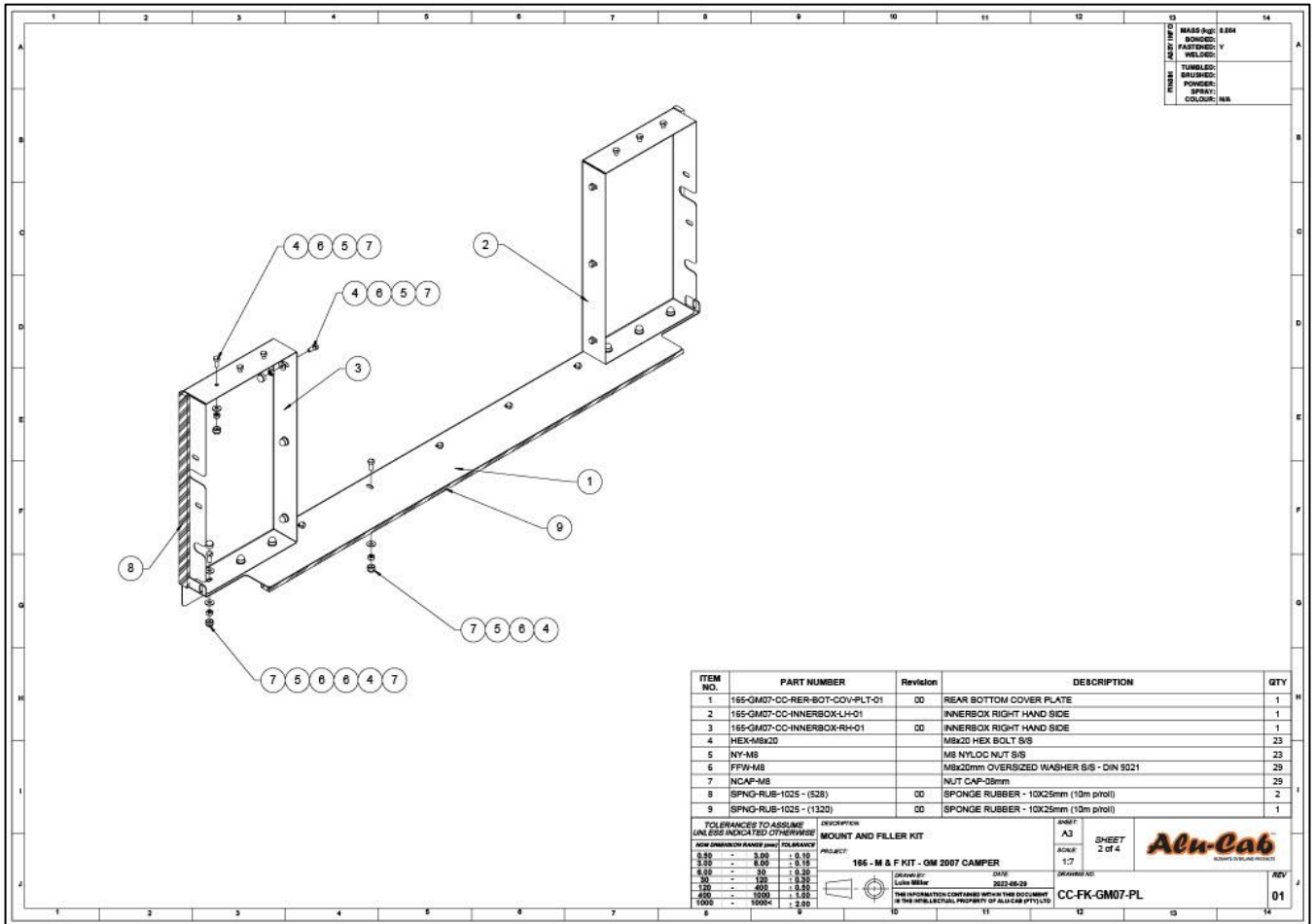
MASS NO:	AS 111
BOOKED:	Y
FINISHED:	Y
TUMBLER:	
BRAISED:	
PAINT:	
COLOR:	MA

ITEM NO.	PART NUMBER	Revision	DESCRIPTION	QTY
1	165-GM07-CC-REN-FLLR-ASSY-01	00	REAR FILLER ASSEMBLY	1
2	165-GM07-CC-MNT-ASSY-01	01	MOUNT ASSEMBLY	1
3	CC-FK-GM16-A02	01	FRONT FILLER ASSEMBLY	1
4	BK-CCFK-FS		CANOPY CAMPER FILLER KIT BOX - FULL SIZE - 720 X 160 X 1950	1

TOLERANCES TO APPLY UNLESS INDICATED OTHERWISE DIMENSION FINISH TOLERANCE 0.50 - 3.00 - 1:0.10 3.00 - 5.00 - 1:0.15 5.00 - 10.00 - 1:0.20 10.00 - 25.00 - 1:0.25 25.00 - 50.00 - 1:0.30 50.00 - 100.00 - 1:0.35 100.00 - 1500.00 - 1:0.40 1500.00 - 10000.00 - 1:0.50		SHEET 1 OF 4 SHEET NO: 110 DATE: 2022-06-29 DRAWN BY:	REV 01
--	--	---	-----------

Rear Filler Kit - Component Identification

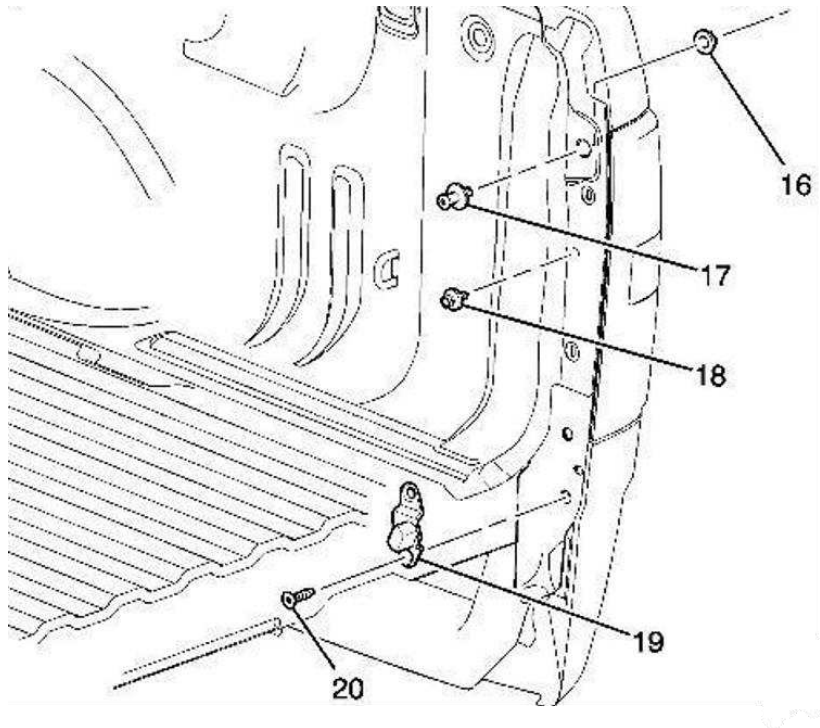
The Rear Filler Assembly is made up of three main sheet metal parts, the inside boxes as well as the bottom filler bracket.



ITEM NO.	PART NUMBER	Revision	DESCRIPTION	QTY
1	165-GM07-CC-RER-BOT-COV-PLT-01	0	REAR BOTTOM COVER PLATE	1
2	165-GM07-CC-INNERBOX-LH-01		INNERBOX RIGHT HAND SIDE	1
3	165-GM07-CC-INNERBOX-RH-01	0	INNERBOX RIGHT HAND SIDE	1
4	HEX-M8x20		M8x20 HEX BOLT S/S	23
5	NY-M8		M8 NYLOC NUT S/S	23
6	FFW-M8		M8x20mm OVERSIZED WASHER S/S - DIN 9021	29
7	NCAP-M8		NUT CAP-08mm	29
8	SPNG-RUB-1025 - (528)	0	SPONGE RUBBER - 10X25mm (10m p/roll)	2
9	SPNG-RUB-1025 - (1320)	0	SPONGE RUBBER - 10X25mm (10m p/roll)	1

Begin the installation of the canopy camper by removing the tailgate and all the OEM bolts that are in the space where the tailgate seats into the load bin.

The image below indicates which bolts need to be removed. Pay close attention to which bolts are used to secure the taillights in place as these will be required later in the installation.

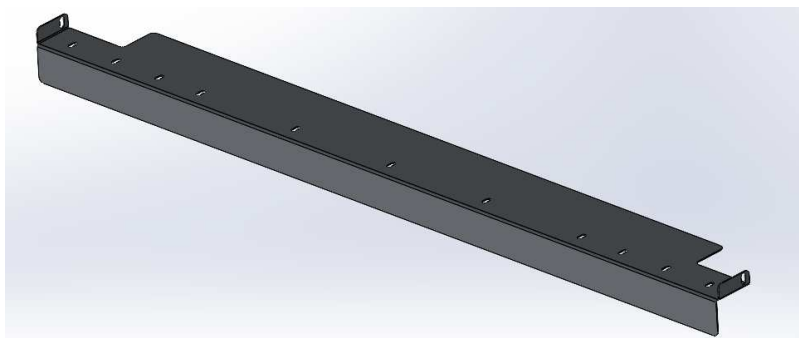


With the bolts removed the installation of the rear filler kit can begin.

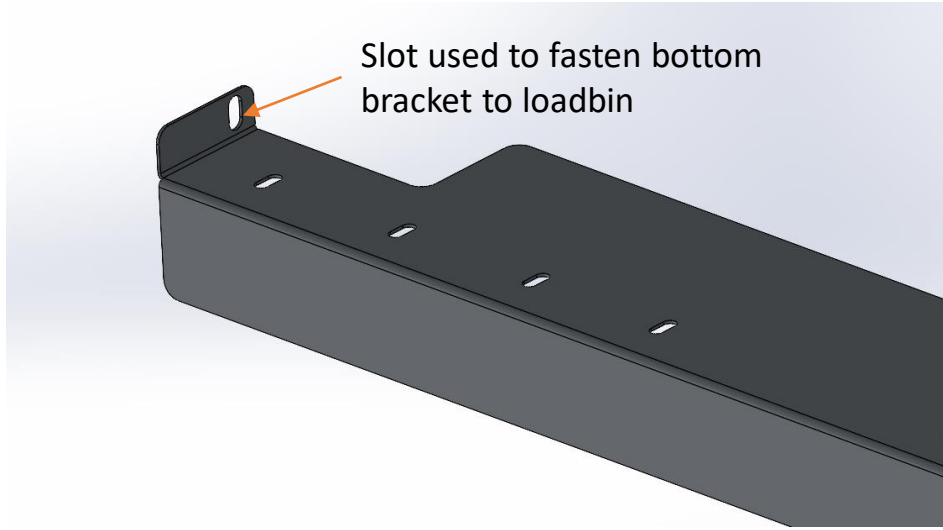
Rear Filler Kit Installation

With the bolts removed the installation of the rear filler kit can begin.

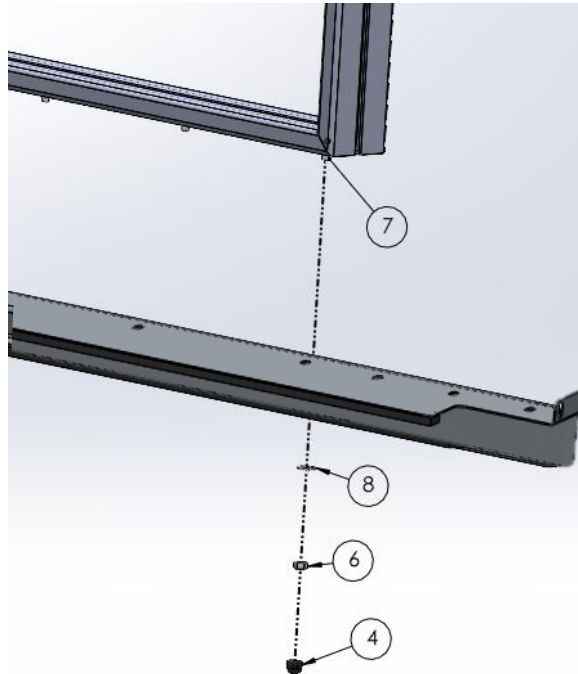
Start by installing the bottom filler bracket, shown in the image below.



The bottom filler bracket is installed using the bolts removed from the tailgate hinge. Push the bolts through the slot in the bottom filler bracket and fasten it down.

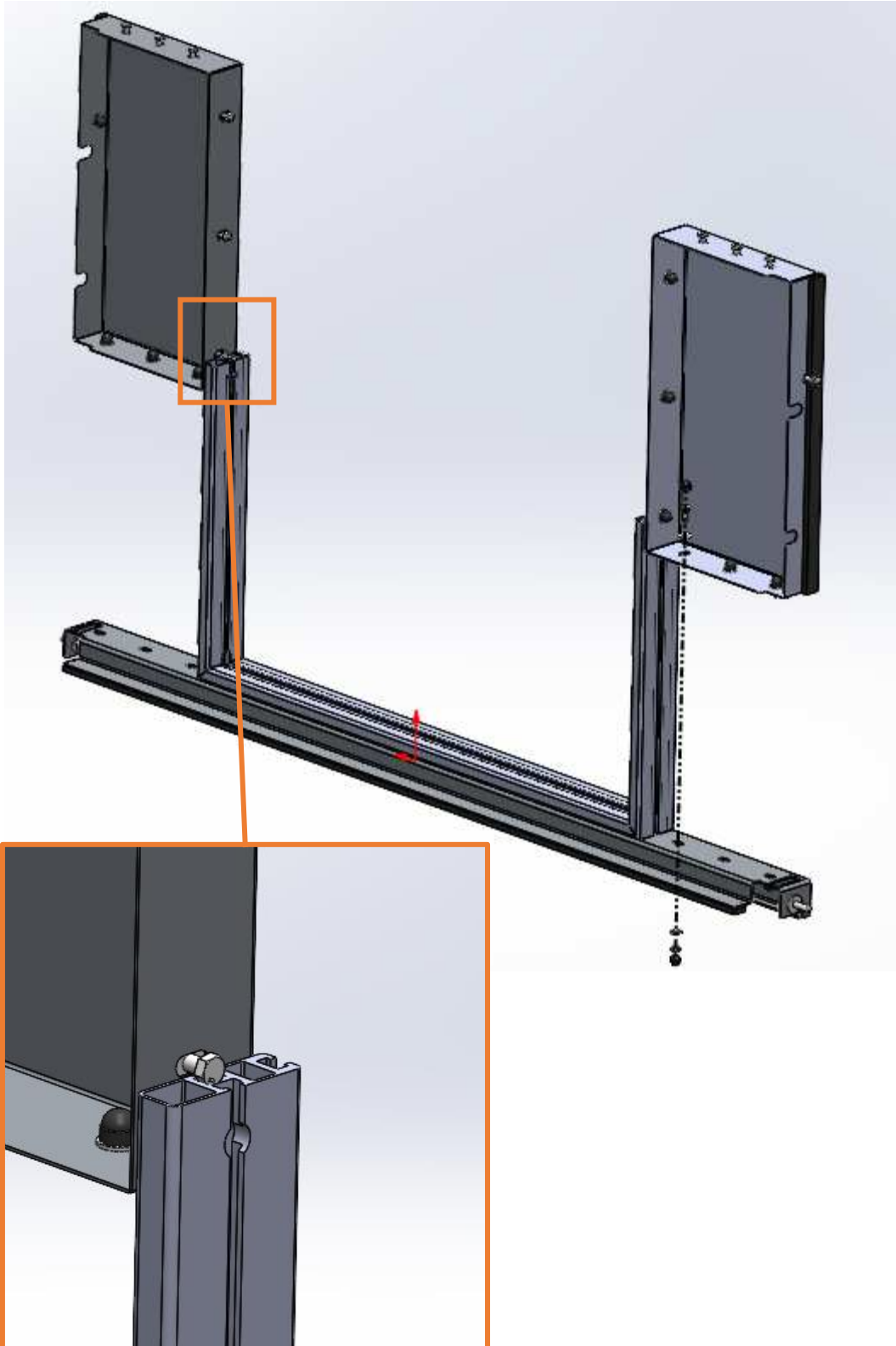


With the bottom bracket installed, the next step in the process is to mount the lower door frame of the canopy camper to the bottom bracket. This is done by sliding five M8x20 hex head bolts (item 7) into the bottom frame and lining them up with the slots in the bottom support bracket. Push the bolts through the slots and fasten them loosely using a M8 Nylock nut (item 6) and washer (item 8).

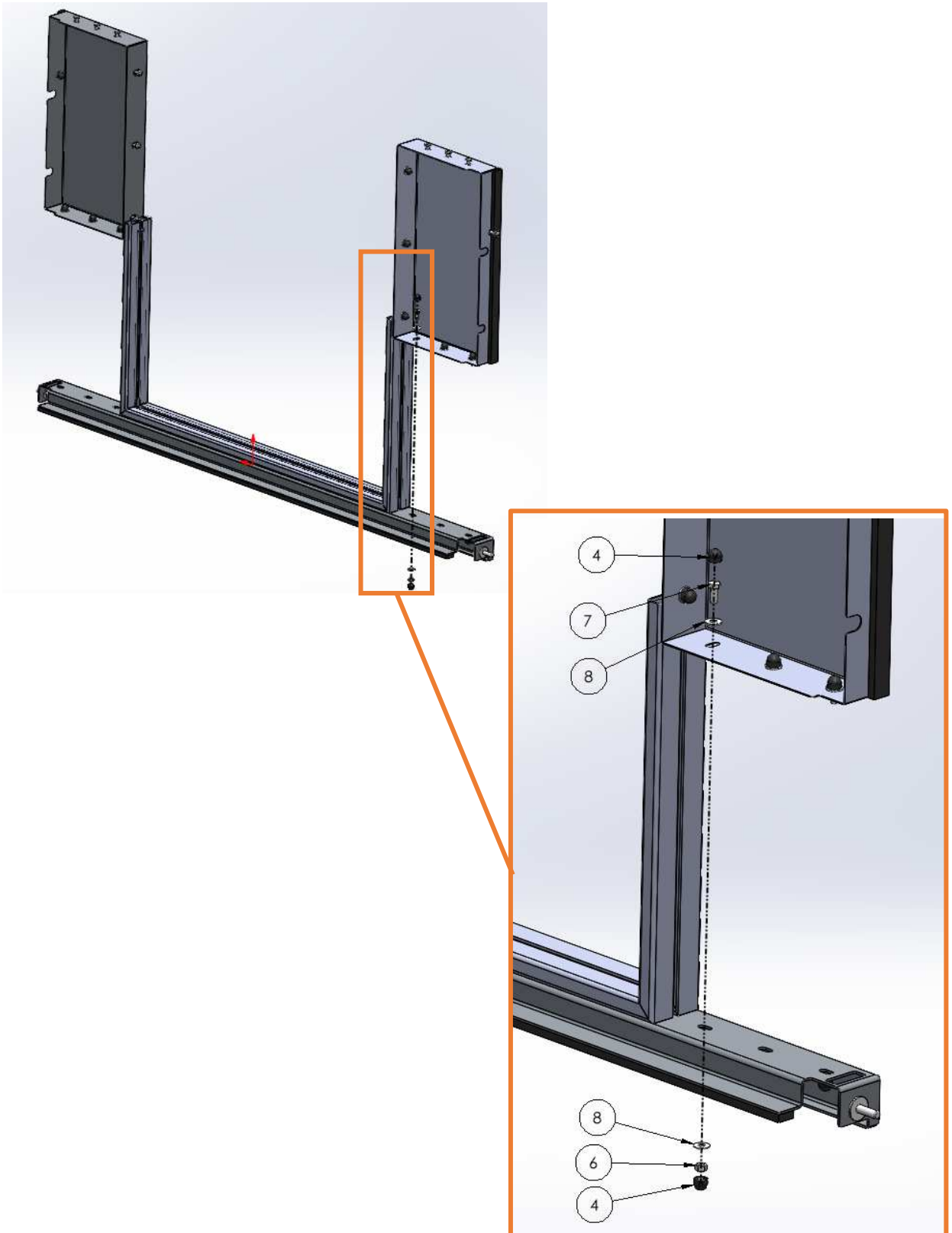


With the bottom door frame installed the last part of the installation for the rear filler kit is adding the side filler boxes.

Align the M8x20 hex head bolts with the outside nut slot channel of the lower door frame and push the boxes down until they seat on the bottom bracket



With the side filler boxes in position fasten them down to the bottom filler bracket using the supplied hardware. The setup is like fitting the bottom door frame, there is just an addition of a flat washer on the inside of the box, and some plastic nut caps to finish the look off.

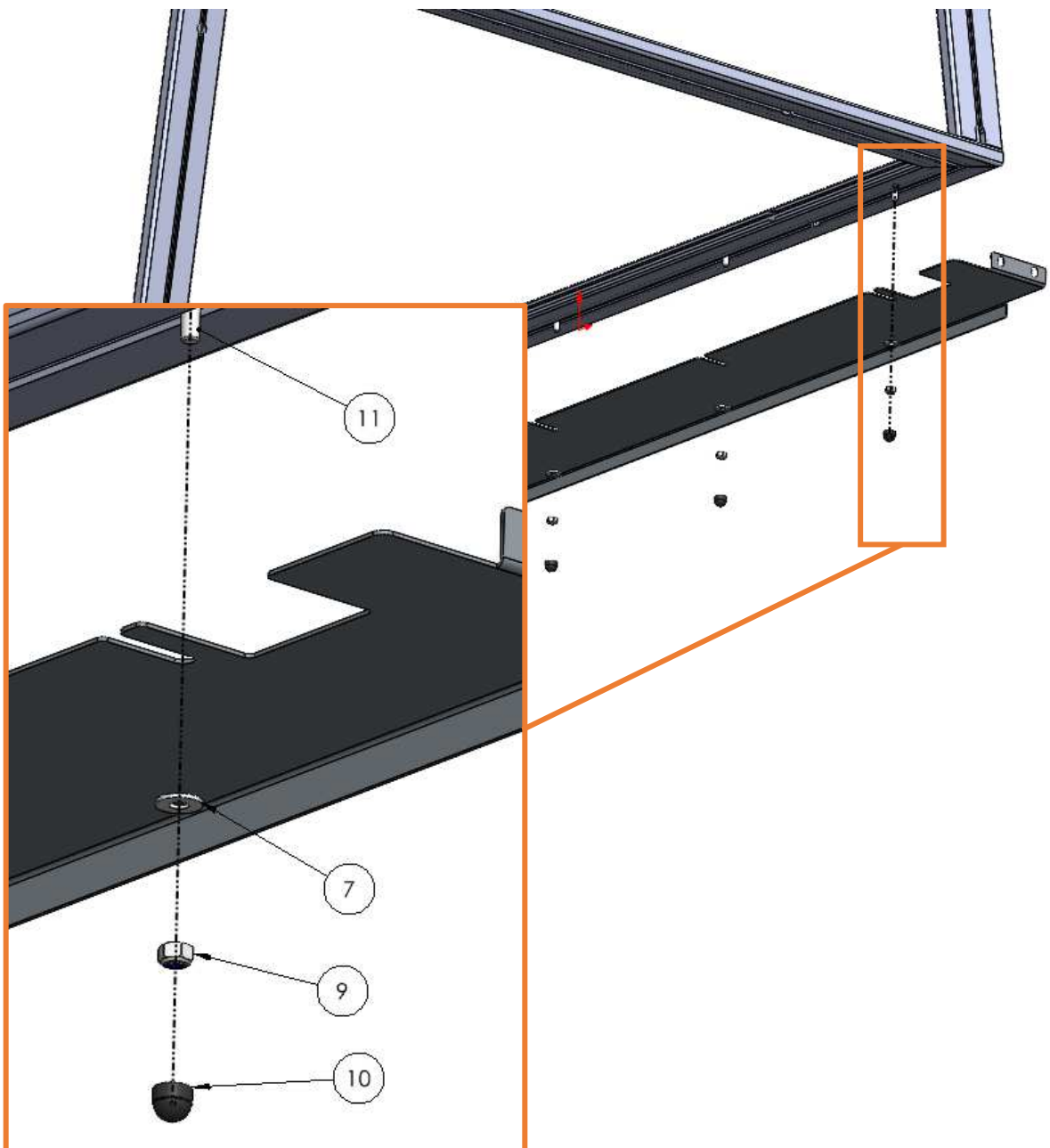


Front Filler Kit - Installation

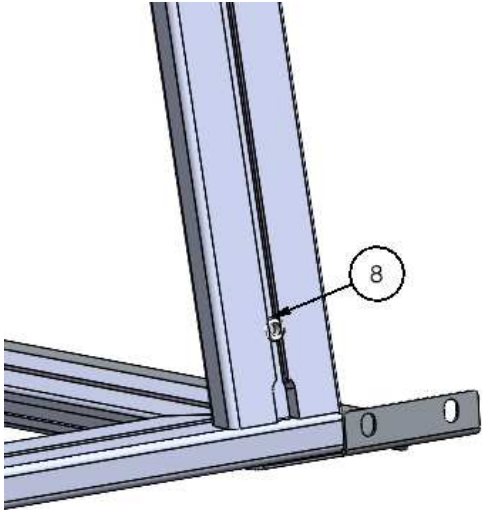
The front filler is composed of 3 separate parts and is required to seal the Canopy Camper when fitting it to the 6,5ft variety of the vehicles.

If a 5,5ft variety is being installed please proceed to page 10 to continue with the installation

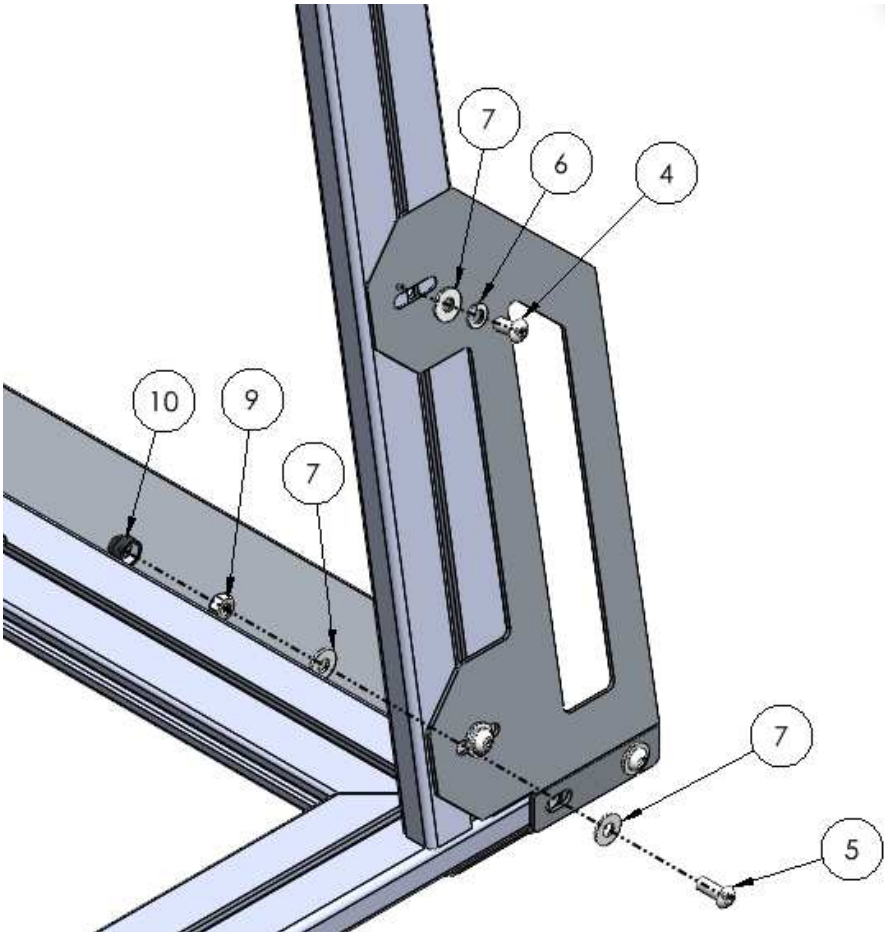
It is fitted to the camper directly. Start by sliding five M8x20 bolts (item 11) into the bottom nut slot of the Canopy Camper Frame and lining them up with the slots cut out on the bottom filler bracket. Once aligned fasten the bottom filler bracket down using a M8 washer (item 7) and a M8 Nylock Nut (item 9).



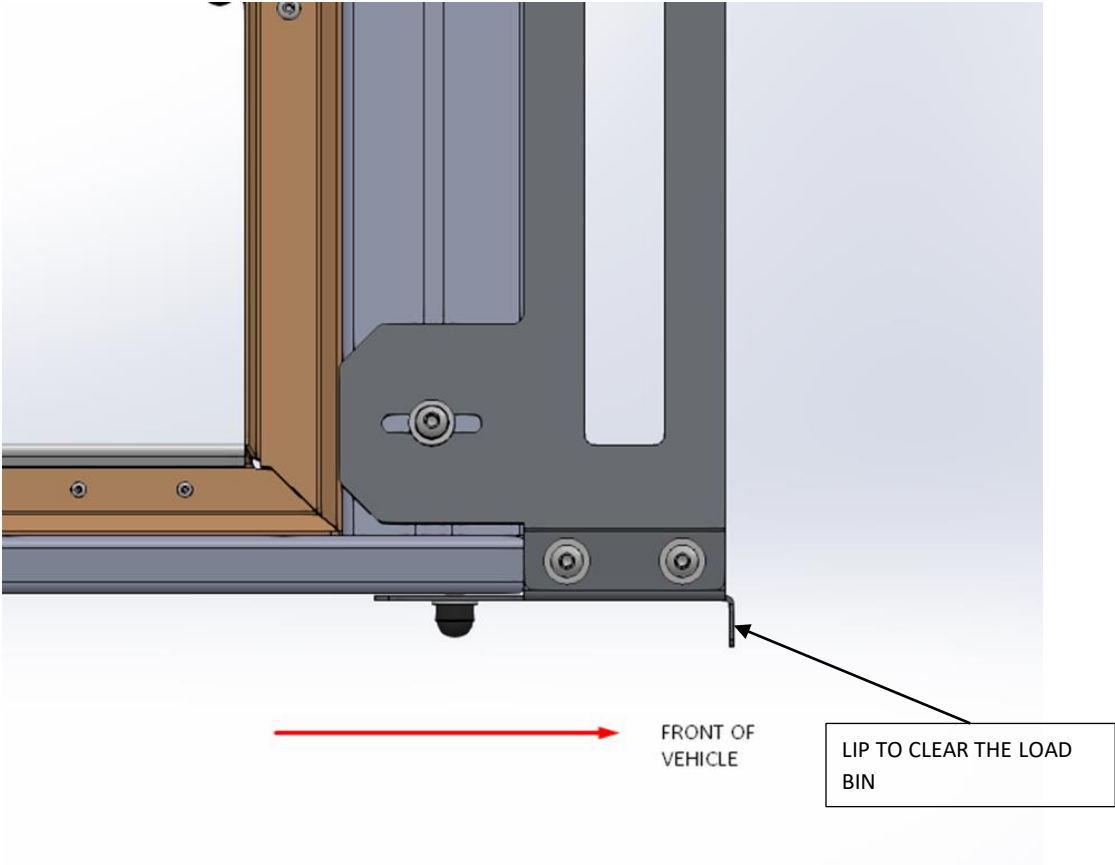
With the bottom filler bracket in place the next step is to slide two M8 hex nuts (item 8) into the outside nut slot of the Canopy Camper.



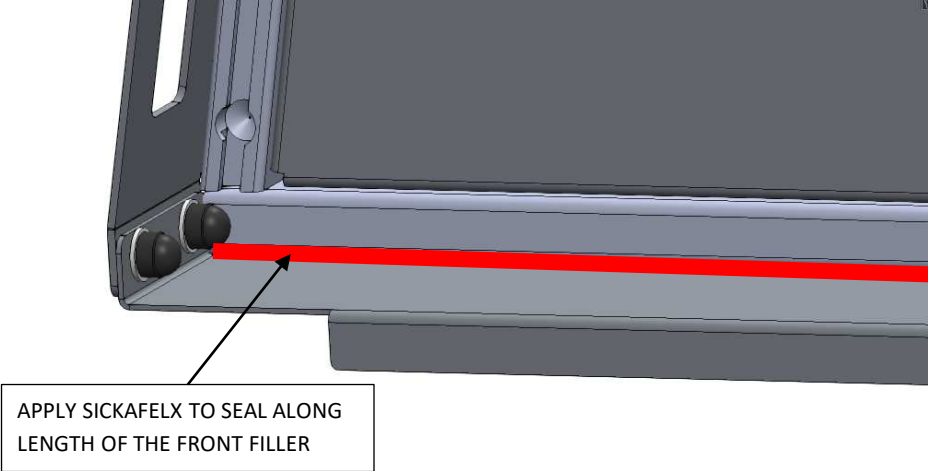
Next fasten the left and right brackets to the bottom filler bracket, and then to the Canopy Camper frame itself



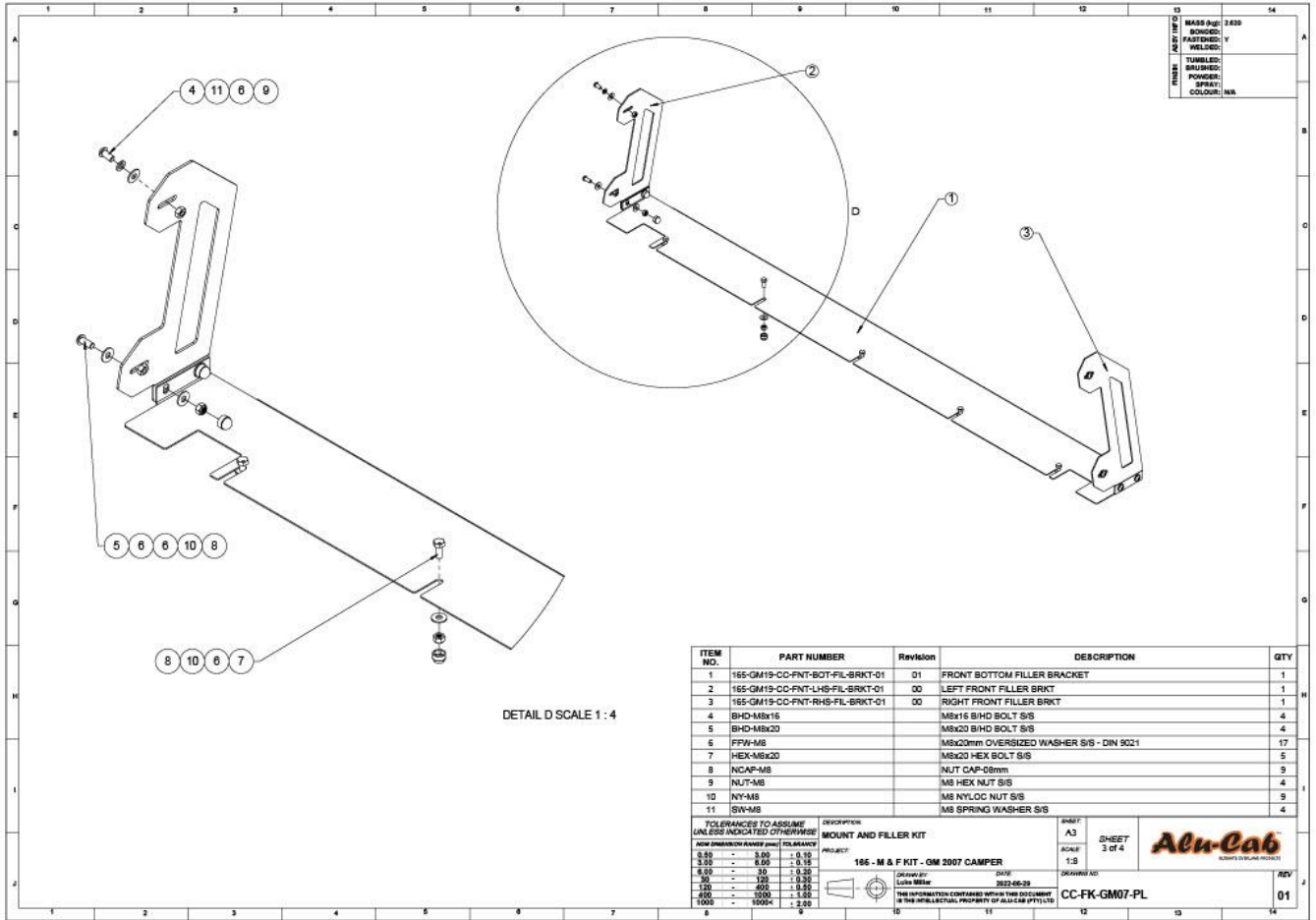
The Install for the front filler is now complete. When installing the canopy camper on to the vehicle ensure the lip of the bottom support bracket sits over the vehicles load bin



The last step is to seal the front filler with Black UV Sikaflex as indicated below



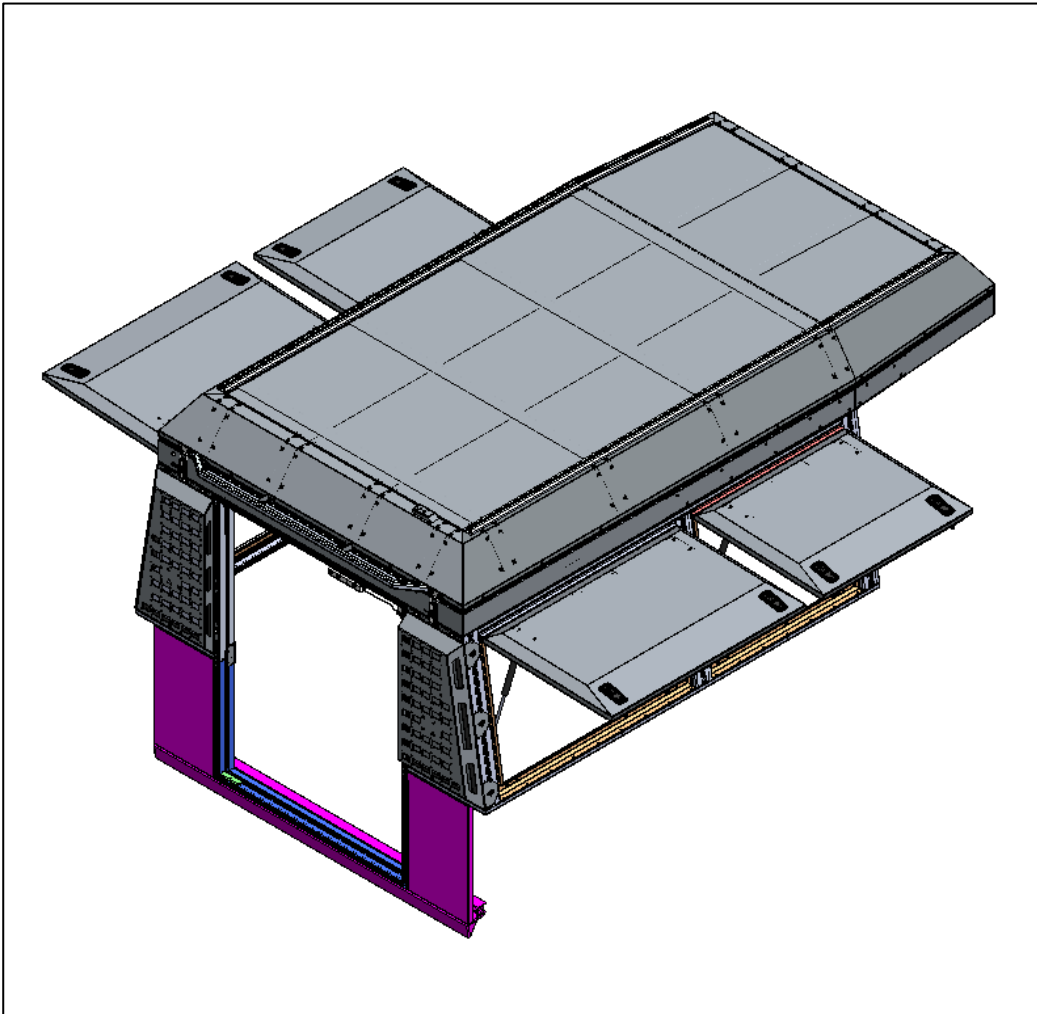
Front Filler Component Identification



ITEM NO.	PART NUMBER	Revision	DESCRIPTION	QTY
1	165-GM19-CC-FNT-BOT-FIL-BRKT-01	1	FRONT BOTTOM FILLER BRACKET	1
2	165-GM19-CC-FNT-LHS-FIL-BRKT-01	0	LEFT FRONT FILLER BRKT	1
3	165-GM19-CC-FNT-RHS-FIL-BRKT-01	0	RIGHT FRONT FILLER BRKT	1
4	BHD-M8x16		M8x16 B/HD BOLT S/S	4
5	BHD-M8x20		M8x20 B/HD BOLT S/S	4
6	FFW-M8		M8x20mm OVERSIZED WASHER S/S - DIN 9021	17
7	HEX-M8x20		M8x20 HEX BOLT S/S	5
8	NCAP-M8		NUT CAP-08mm	9
9	NUT-M8		M8 HEX NUT S/S	4
10	NY-M8		M8 NYLOC NUT S/S	9
11	SW-M8		M8 SPRING WASHER S/S	4

Canopy Camper Base Unit - Installation & Assembly

Seating the Base Unit



Attach the gasket material to the lower seating surface of the Canopy Camper's base frame - Refer to the stand-alone Fitment Instruction for this process.

Lower the Canopy Camper Base Unit onto the already mounted Rear Filler Assembly, as shown in the image above, and align the lower and upper portions of the door frame.

Install mounting brackets to secure the camper in place.

Mounting Bracket Kit - Component Identification

DETAIL F SCALE 1 : 4

PART NUMBER	Revision	DESCRIPTION	QTY	
1	165-GM07-CC-FNT-MNT-BRK-01	01	MOUNTING BRACKET 01	2
2	165-GM07-CC-FNT-MNT-BRK-02	00	FRONT MOUNTING BRACKET 02	4
3	165-GM07-CC-RER-MNT-BRK-01	00	MOUNT BRACKET	2
4	165-GM07-CC-RER-MNT-BRK-02	00	REAR MOUNT BRACKET GUSSET	4
5	165-GM07-CC-RER-MNT-PLT-01	00	REAR MOUNT PLATE	6
6	209-CCDC-MNT-DSC-01	00	MOUNTING DISC	6
7	209-CCDC-TOP-BRK-01	01	TOP BRACKET	2
8	BX-BB		BRACKET - BOX	1
9	FFW-M8		M8x20mm OVERSIZED WASHER S/S - DIN 9021	4
10	FW-M12		12mm FLAT WASHER (ID - 13; OD - 20; T 1.8 - 2.2) DIN - 433	4
11	FW-M8		M8x16mm FLAT WASHER S/S - DIN 125	4
12	HEX-M12x40		M12x40 HEX BOLT S/S	4
13	HEX-M8x20		M8x20 HEX BOLT S/S	6
14	NCAP-M12		NUT CAP-012mm	4
15	NCAP-M8		NUT CAP-08mm	8
16	NY-M12		M12 NYLOC NUT S/S	4
17	NY-M8		M8 NYLOC NUT S/S	6
18	FFW-M12		12mm FLAT WASHER (ID - 13; OD - 24; T 2.3-2.7) DIN - 125	4

TOLERANCES TO ASSUME UNLESS INDICATED OTHERWISE

0.50	-	0.50	+ 0.15
0.75	-	0.75	+ 0.20
1.00	-	1.00	+ 0.25
1.50	-	1.50	+ 0.30
2.00	-	2.00	+ 0.35
3.00	-	3.00	+ 0.40
5.00	-	5.00	+ 0.50
10.00	-	10.00	+ 0.60

INFORMATION: MOUNT AND FILLER KIT
 POLICE: 165 - M & F KIT - GM 2007 CAMPER
 DATE: 2022-08-23
 DRAWN BY: LUKA WITKO
 CHECKED BY: JESSICA DAL
 SHEET: 4 of 4
 1:10
Alu-Cab
 CC-FK-GM07-PL
 01

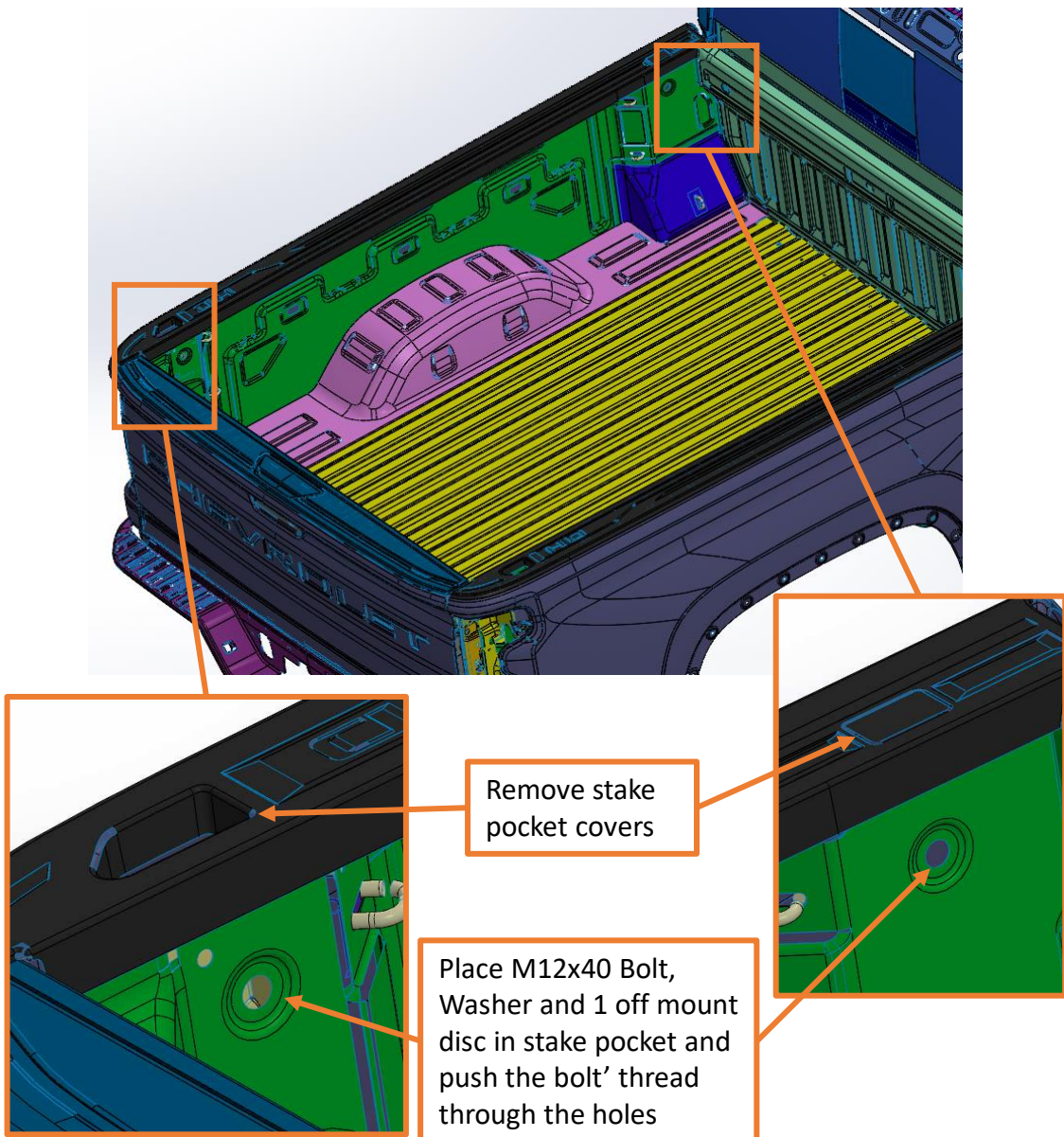
ITEM NO.	PART NUMBER	Revision	DESCRIPTION	QTY
1	165-GM07-CC-FNT-MNT-BRK-01	1	MOUNTING BRACKET 01	2
2	165-GM07-CC-FNT-MNT-BRK-02	0	FRONT MOUNTING BRACKET 02	4
3	165-GM07-CC-RER-MNT-BRK-01	0	MOUNT BRACKET	2
4	165-GM07-CC-RER-MNT-BRK-02	0	REAR MOUNT BRACKET GUSSET	4
5	165-GM07-CC-RER-MNT-PLT-01	0	REAR MOUNT PLATE	6
6	209-CCDC-MNT-DSC-01	0	MOUNTING DISC	6
7	209-CCDC-TOP-BRK-01	1	TOP BRACKET	2
8	BX-BB		BRACKET - BOX	1
9	FFW-M8		M8x20mm OVERSIZED WASHER S/S - DIN 9021	4
10	FW-M12		12mm FLAT WASHER (ID - 13; OD - 20; T 1.8 - 2.2) DIN - 433	4
11	FW-M8		M8x16mm FLAT WASHER S/S - DIN 125	4
12	HEX-M12x40		M12x40 HEX BOLT S/S	4
13	HEX-M8x20		M8x20 HEX BOLT S/S	6
14	NCAP-M12		NUT CAP-012mm	4
15	NCAP-M8		NUT CAP-08mm	8
16	NY-M12		M12 NYLOC NUT S/S	4
17	NY-M8		M8 NYLOC NUT S/S	6
18	FFW-M12		12mm FLAT WASHER (ID - 13; OD - 24; T 2.3-2.7) DIN - 125	4

Mounting Bracket Kit - Installation

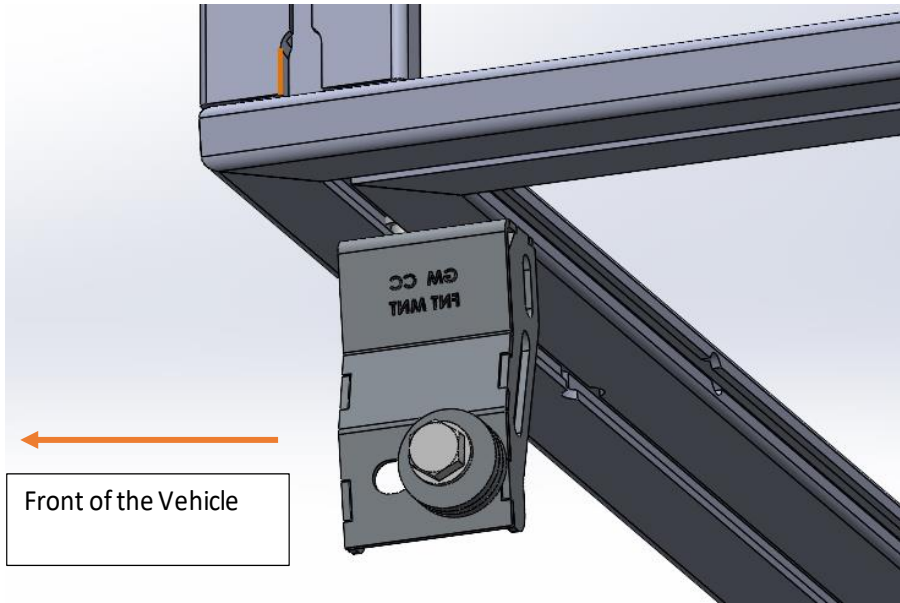
Canopy Camper Mounting Brackets

There are two different sets of brackets provided for this installation the 209-CCDC-MNT-ASSY-01 and the 165-GM07-CC-FNT-MNT-BRK-ASSY-01. The 165-GM07-CC-FNT-MNT-BRK-ASSY-01 will be used to fasten the camper down in the front and the 209-CCDC-MNT-ASSY-01 will be used to fasten the camper down in the back.

To start the installation of the mounting brackets, locate the stake holes along with the holes that go into the load bin.

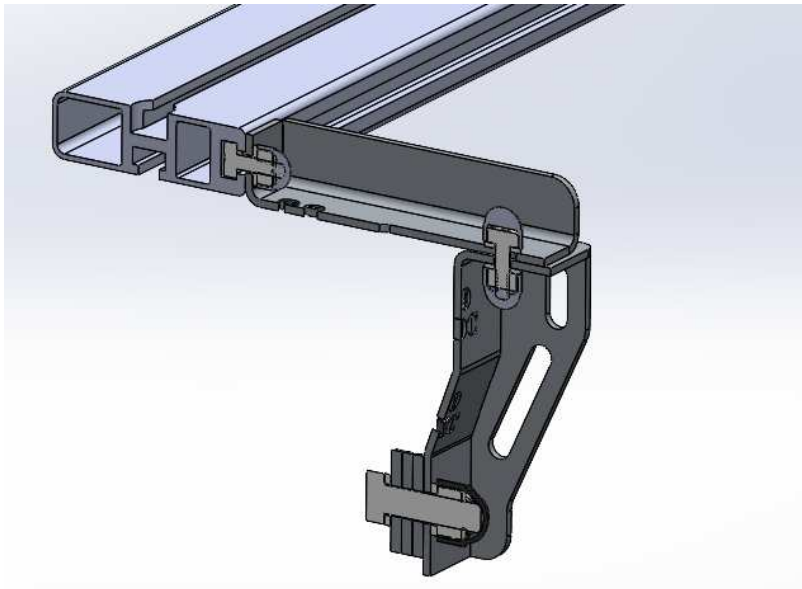


The front brackets with the two slots in the top of the bracket are mounted to the bottom of the camper frame.



The rear brackets use a top mount bracket (209-CCDC-TOP-BRK-01) to fasten to the Canopy Camper Frame.

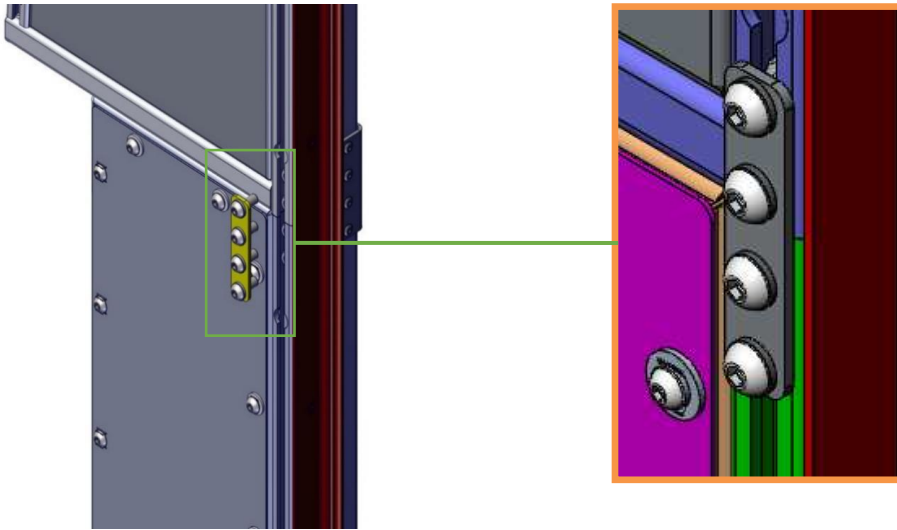
The Top bracket is secured to the frame using an M8 bolt that has been slid into the extrusion as pictured in the sliced view below.



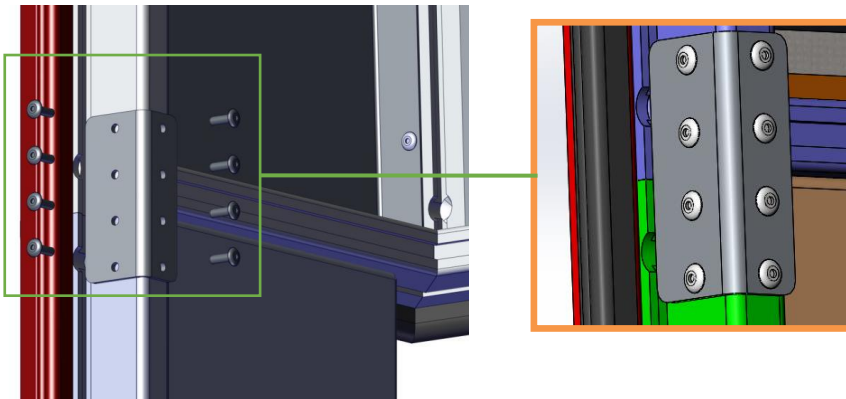
Once all the brackets are in their correct positions they can be fastened down securely using a 13mm socket for the M8 nut and bolts and a 18 mm socket for the M12 bolts and nuts. A ratchet will also be required.

Base Unit to Rear Filler Assembly Connection

Using the supplied hardware, fasten the lower and upper door frames together, on each side of the **EXTERNAL** door opening. See images below:

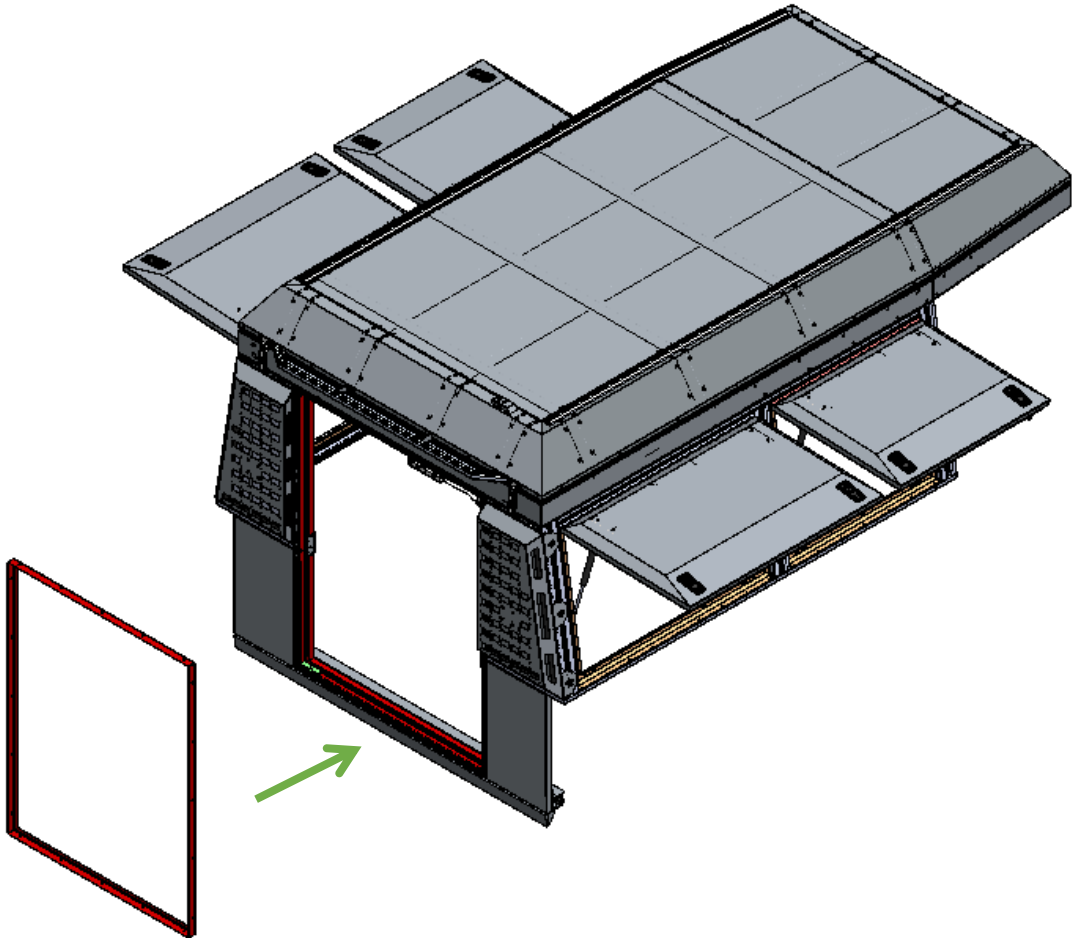


Using the supplied hardware, fasten the lower and upper door frames together, on each side of the **INTERNAL** door opening. See images below:



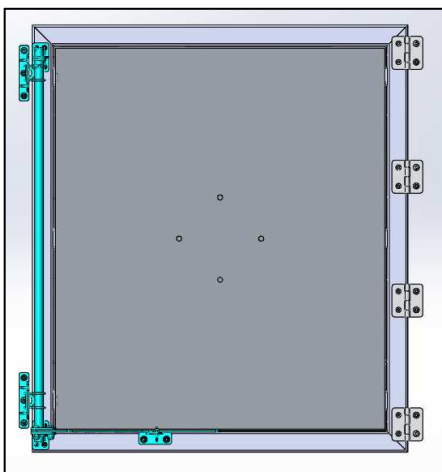
Rear Door Rebate Installation

Insert the Rear Door Rebate Frame into the door frame opening, ensure that mounting holes all align. Using the supplied hardware, rivet the frame in place along the LHS, RHS and upper and lower mounting interfaces. See images below:



Rear Door Installation

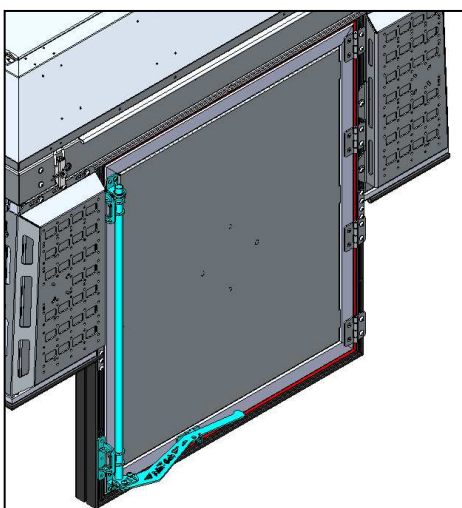
The Rear Door Assembly is supplied fully assembled with its hinges, and the locking mechanism, as shown below:



Insert the assembled door into the rear door opening. Fasten the four (4) hinges into the nut slot on the RHS door frame first, using the supplied hardware.

Align the two (2) locking mechanism Hook Brackets with the upper and lower lock tabs and fasten into the nut slot on the LHS frame, using the supplied hardware.

Installed Rear Door shown below (rear Filler Assembly removed for clarity):



NB! The Canopy Camper must rest solely on the mounting brackets and no load is allowed on the load bin. Once this is completed, the Canopy Camper has been installed successfully.

Installation Completed

Your installation of the Tundra Alu-Cabin is now completed.

Congratulations!

Please remember that any areas where there is Sikaflex might still be sticky and should cure for a minimum of 24 hours before going on any overlanding trip.

From us at the Alu-Cab Team:

Happy Camping!