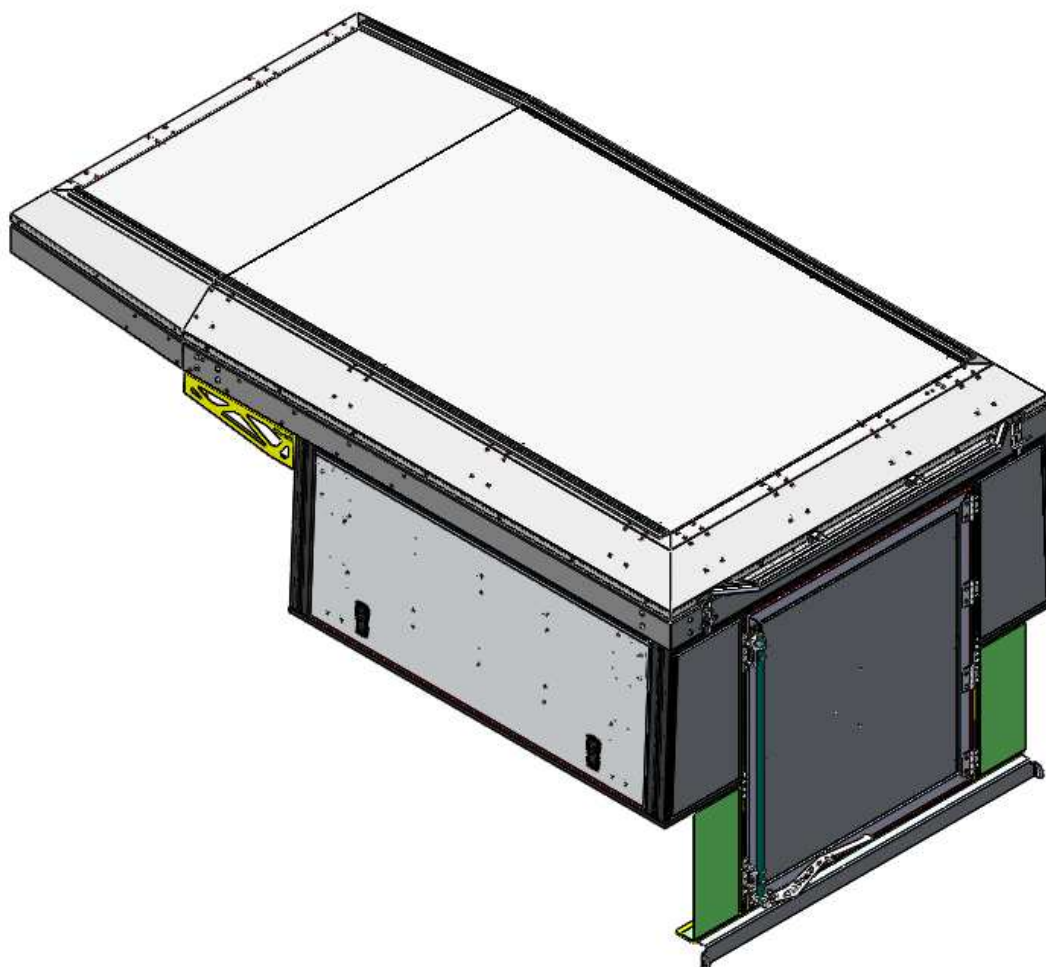


# FITMENT INSTRUCTIONS

**Alu-Cab™**



## TOYOTA HILUX VIGO DC & XC CANOPY CAMPER

All rights reserved. No part of this document may be reproduced, translated, stored in a retrieval system, or transmitted, in any form or by any means, electronic, mechanical, photocopying, recording or otherwise, without prior written permission of the owner.

Review all instructions information carefully before installation.

Any damages, direct or incidental to the installer and/or property due to incorrect installation of any parts are the responsibility of the installer. Due to the various applications and fitment options available, the responsibility lies with the user to ensure all mounting points are secure and tight before every trip. If unsure, consult with your Distributor regarding the operations of our products.

Users are advised to be mindful of the load they are carrying and drive in accordance with road conditions.

DISCLAIMER

**Alu-Cab**

1.Rear filler panel assembly Packing List

ITEM NO.	PART NUMBER	DESCRIPTION	QTY
1	162-VIGO-DC-CC-BOT-SUPP-BRT-01	BOTTOM SUPPORT BRACKET	1
2	162-VIGO-CC-LWR-DOOR-FRM-PLT-01	LOWER DOOR FRAME PLATE	1
3	162-VIGO-CC-LWR-DOOR-FRM-AD1	LOWER DOOR FRAME	1
4	162-VIGO-CC-BOT-SUPP-BRT-01	BOTTOM SUPPORT BRACKET	1
5	162-VIGO-CC-INNER-BOX-LH-01	INNER BOX LH	1
6	162-VIGO-CC-INNER-BOX-RH-01	INNER BOX RH	1
7	162-FRM-CONN-PLT-01	CONNECTOR PLATE 1	2
8	162-FRM-CONN-PLT-02	CONNECTOR PLATE 2	2
9	162-REB-DOOR-LOCK-TUBE-PLT-01	TUBE PLATE	1
10	162-REB-DOOR-LOCK-TUBE-PLT-01	DOOR LOCK PLATE	1
11	162-REB-DOOR-LOCK-TUBE-CTCH-01	TUBE CATCH	2
12	BHD-M6x16	M6x16 BHD BOLT S/S	19
13	NUT-M6	M6 HEX NUT S/S	19
14	SW-M6	M6 SPRING WASHER S/S	19
15	FW-M6	M6x20mm OVERSIZED WASHER S/S - DIN 9021	11
16	FW-M6	M6x16mm OVERSIZED WASHER S/S - DIN 9021	2
17	CSK-M6x10	M6x10 CSK BOLT S/S	5
18	CSK-M6x20	M6x20 CSK BOLT S/S	2
19	NY-M6	M6 NYLOC NUT S/S	2
20	NCA-P-M6	NUT CAP-60mm	2
21	RIV-4815AS	BLIND RIVET	16
22	RLB-MDS - (0.45mm)	MIDSET DOOR SEAL, 450mm	2
23	RIV-4821ASSC	COUNTERSINK BLIND RIVET	5

TOLERANCES TO ASSEMBLY

UNLESS INDICATED OTHERWISE

REAR FILLER KIT ASSEMBLY

162 - M & F KIT - VIGO DC & XC CAMPER

2022 VASE

CC-FK-TH05

2 of 4

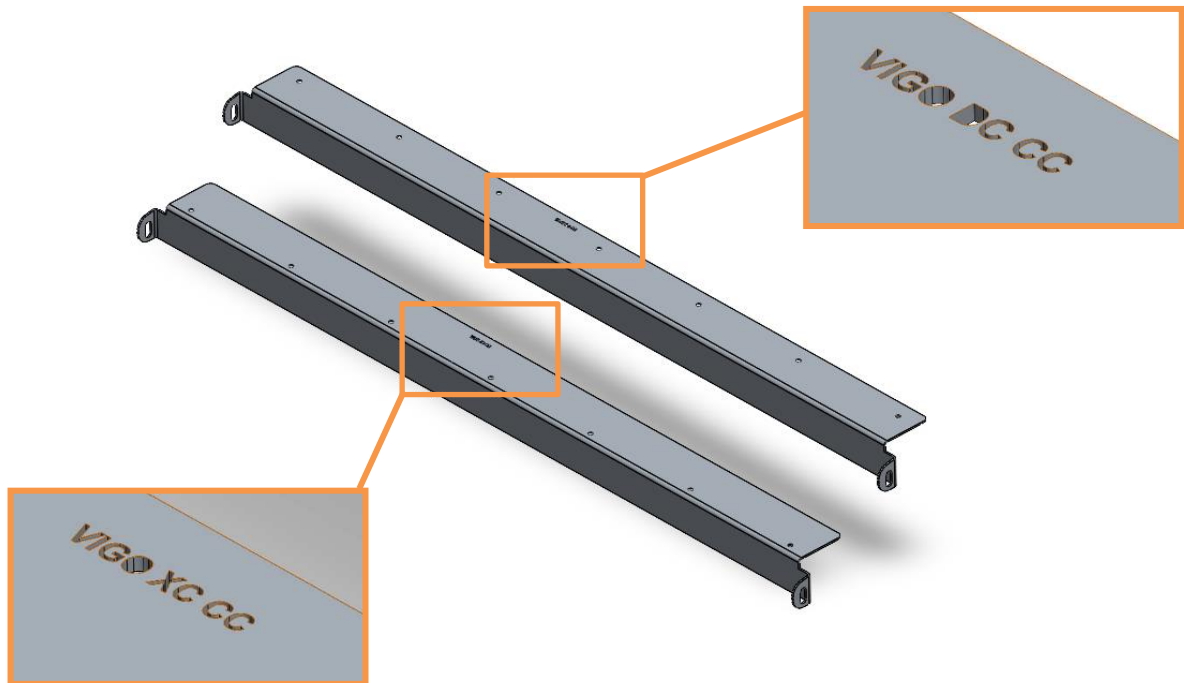
Rev

02

## 1.1 Rear filler panel assembly Double Cab vs Extra Cab

The Toyota Vigo Kit includes two different bottom mount brackets. Refer to items 1 and 4 from the previous image.

The bottom brackets are also clearly annotated to avoid any confusion.

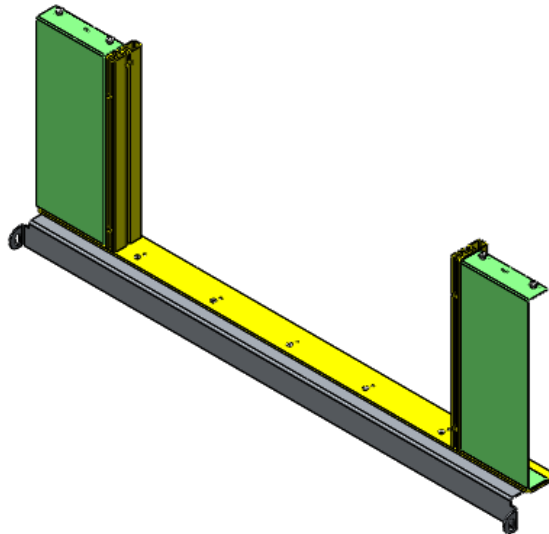
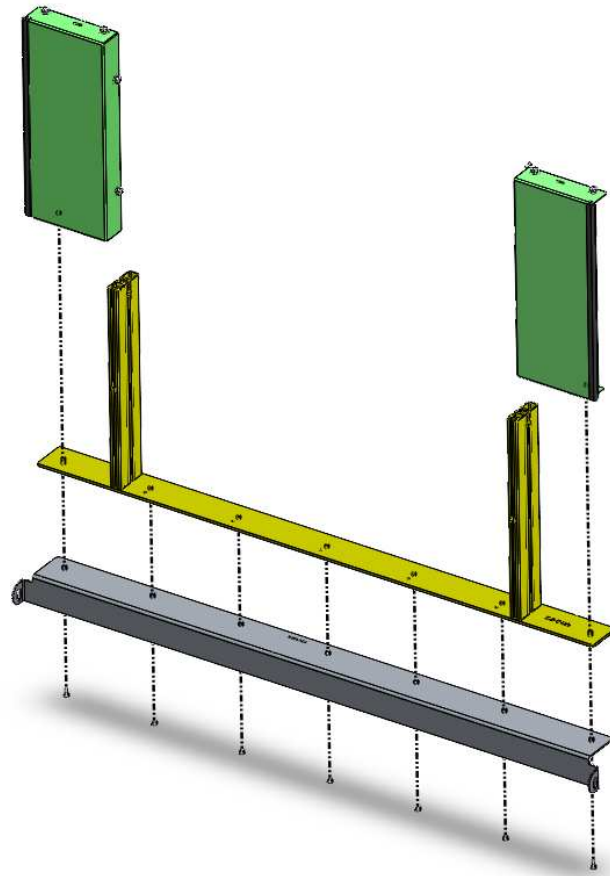


Choose the correct brackets to be used in the correct application. The bottom support bracket annotated as *VIGO XC CC* should be used on the Extracab (XC) variety of the Hilux Vigo. The bottom support bracket annotated as *VIGO DC CC* should be used on the Doublecab (DC) variety of the Hilux Vigo.

It is important to note that these kits come pre-assembled with the filler boxes as well as the lower door frame. It may be necessary to loosen the M6x10 countersunk bolts to remove an incorrect bottom frame and then fit the correct one.

Once the correct bottom bracket has been chosen please proceed fitting it to the lower door frame and the filler panel assembly.

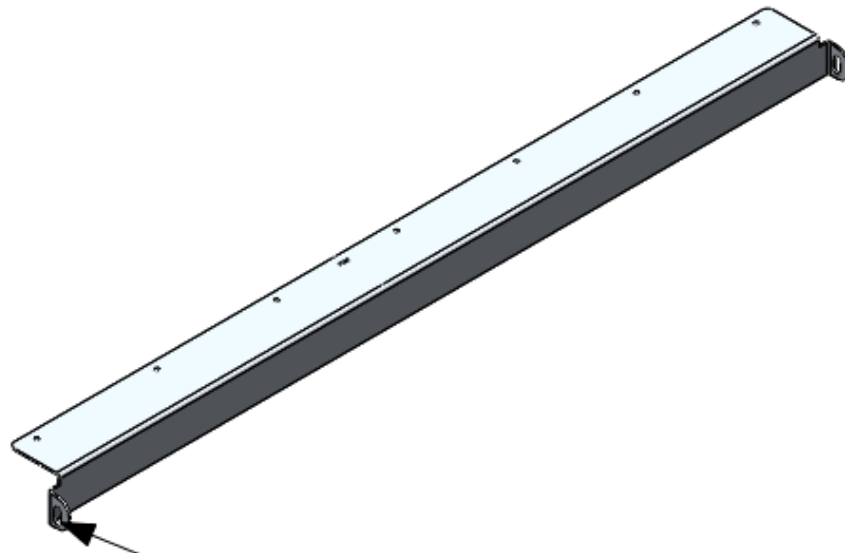
2. Fit lower door frame to filler panel assembly as shown.



**WARNING**

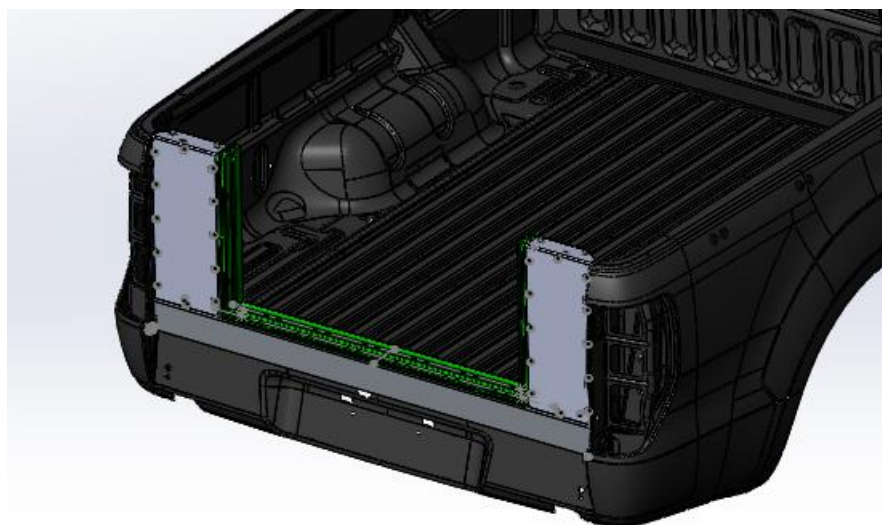
Always wear appropriate PPE ( Personal protection equipment) when fitting this product. Although the mounting kit is designed to be DIY, if you have any doubts or concerns, contact an accredited fitment centre to carry out the work. Alu-Cab will not be liable for any injury to persons, and/or damage to products and/or vehicles.

3. Rear bottom support bracket.



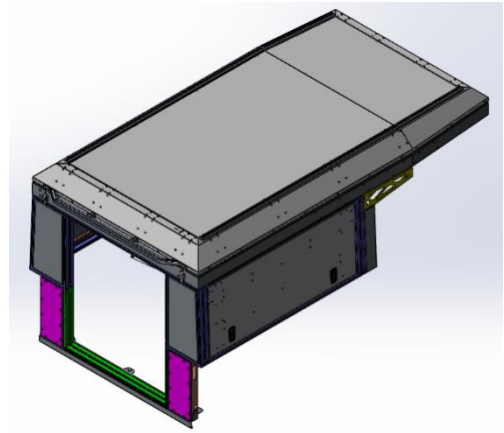
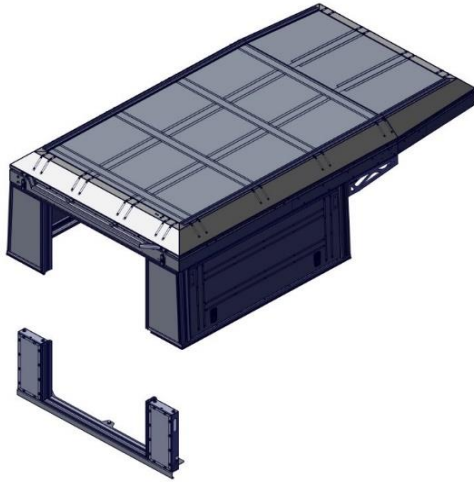
BOLT TO EXISTING THREADED  
PIVOT TAIL GATE HOLES  
BOTH ENDS.

4. Mount filler panel assembly to load bin as shown.



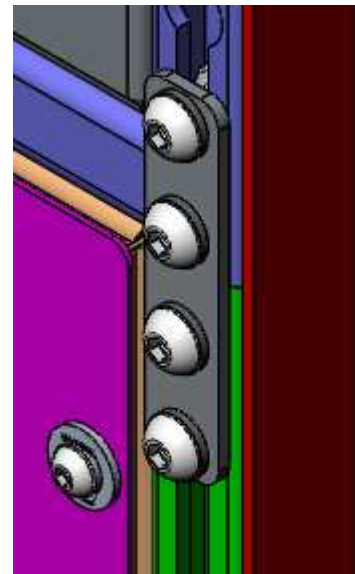
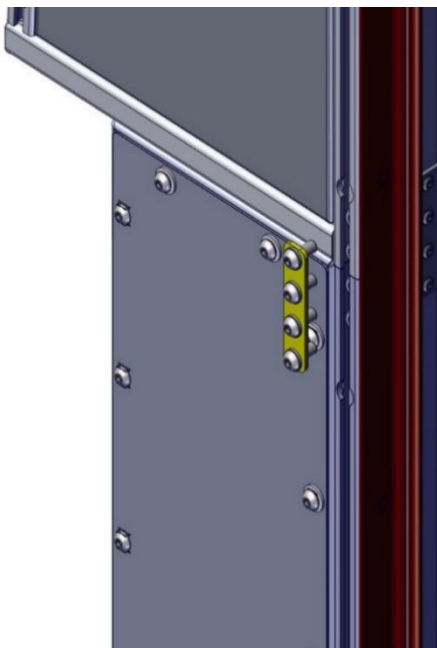


5. Then mount canopy camper base unit on top of load bin.



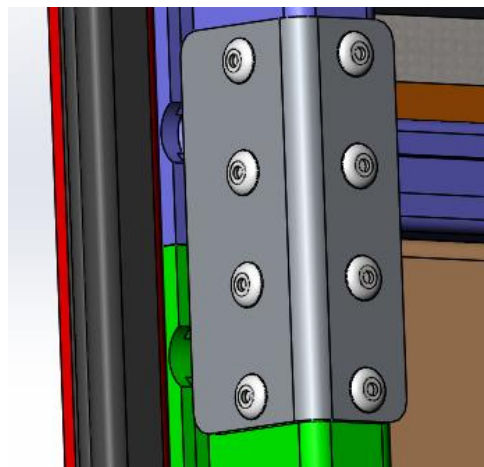
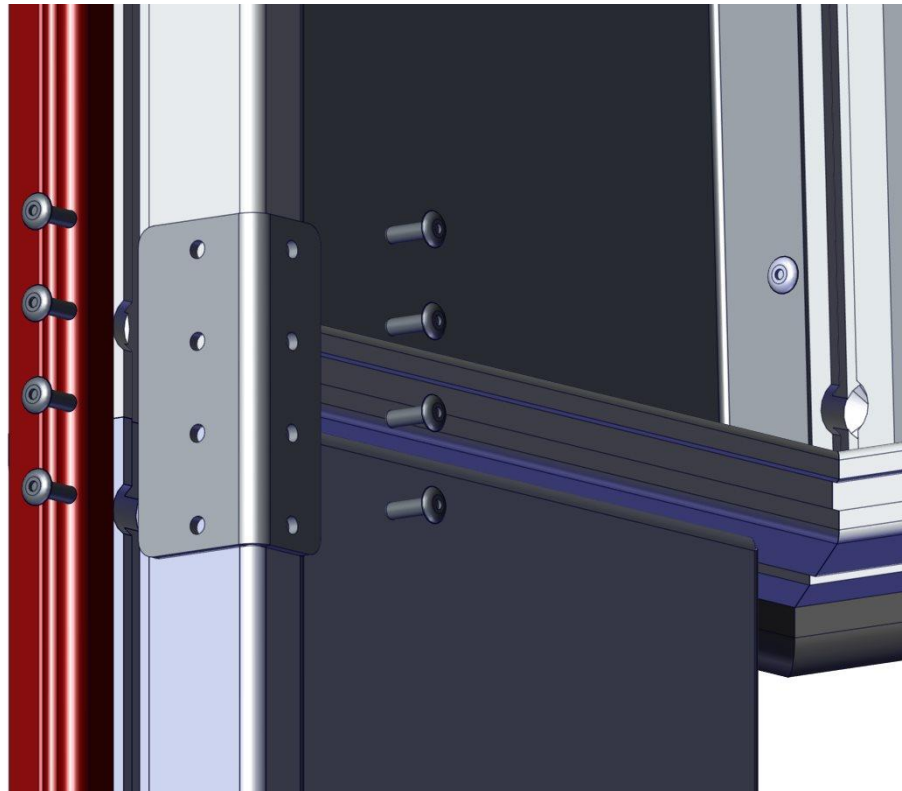
5.1. Connect rear filler panel assembly and base unit as shown.

### OUTER MOUNTING ON BOTH JOINTS

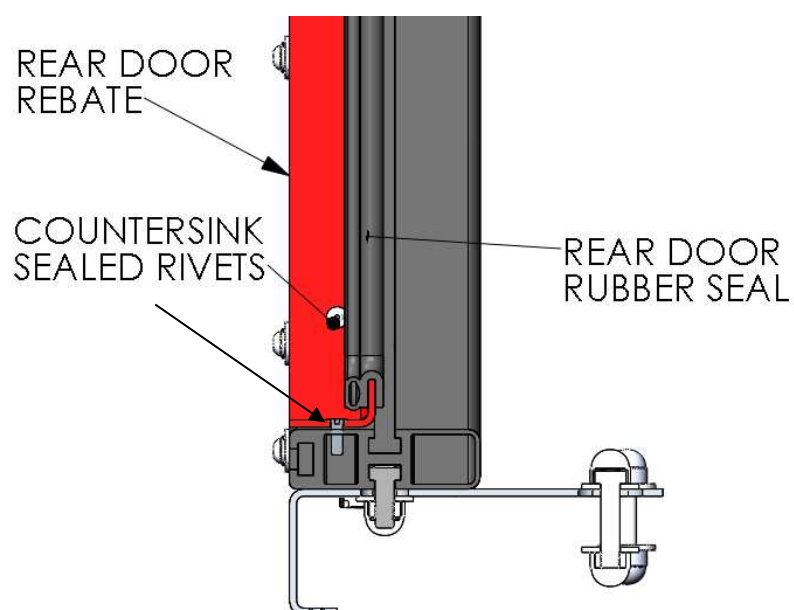
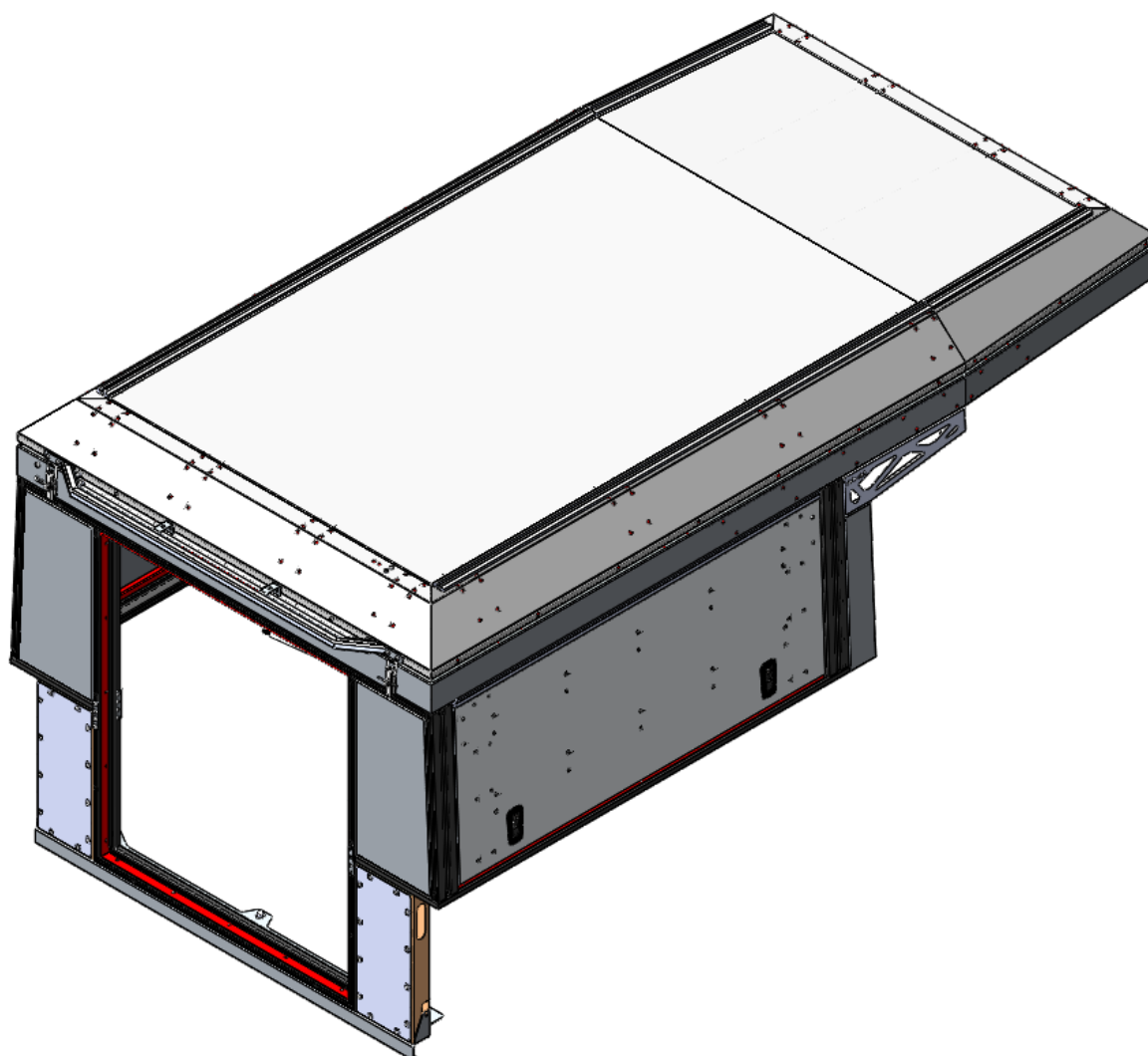


## 5.2

### INNER MOUNTING ON BOTH JOINTS

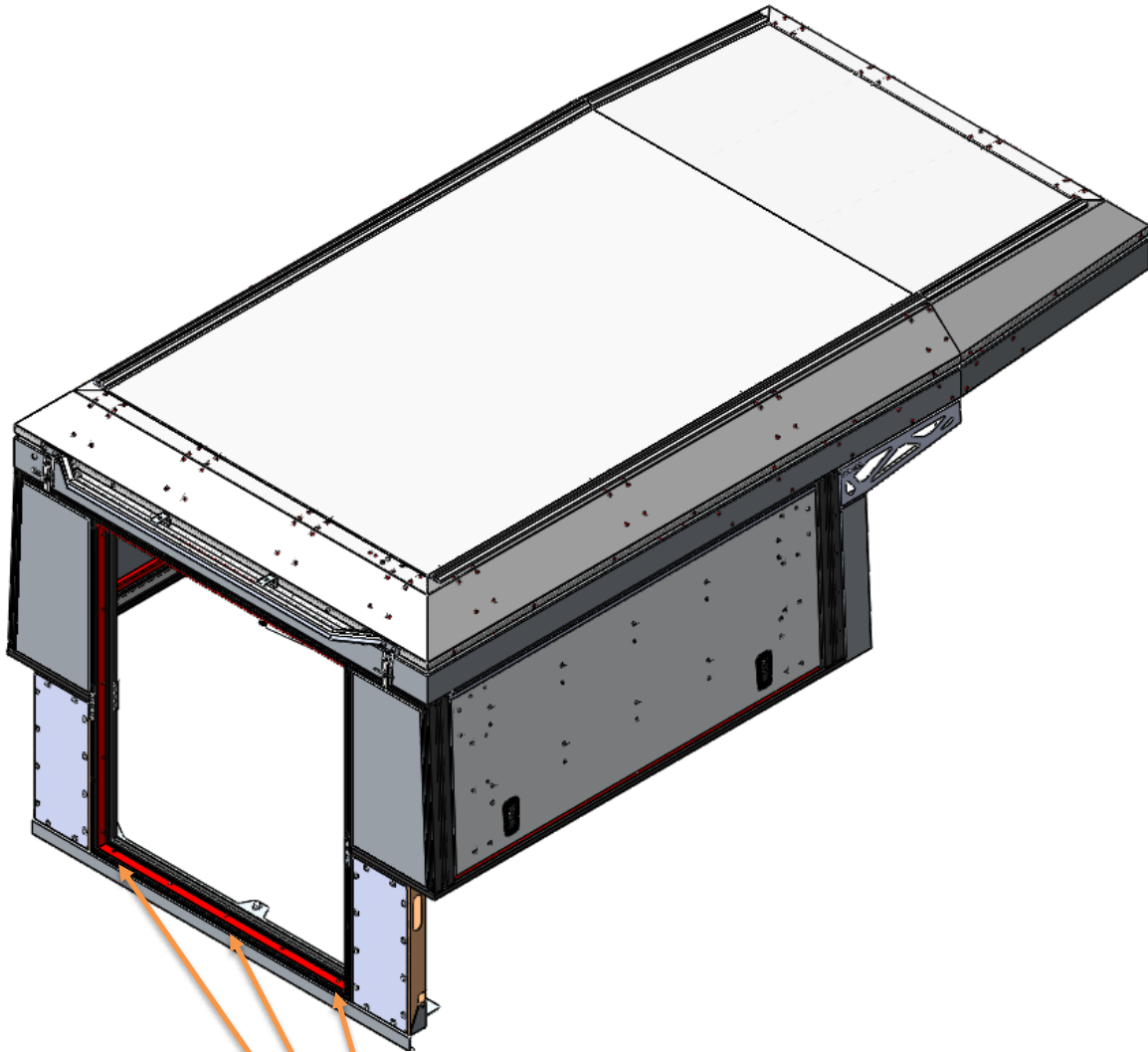


6. Fit rear door rebate with  $\text{Ø}4.8 \times 15$  sealed countersink rivets as shown.



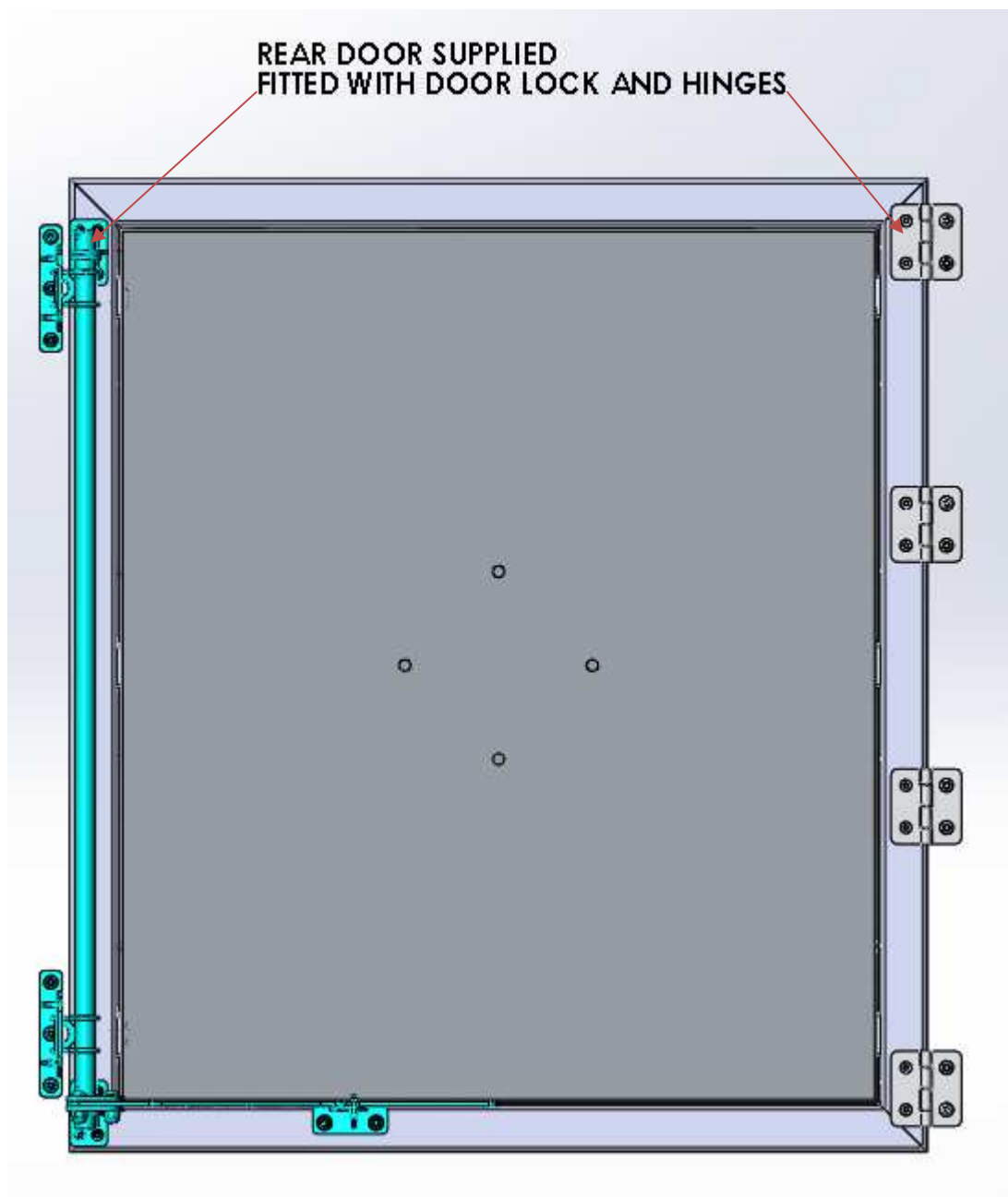


The holes for the countersunk rivets that fit into the bottom of the rear door rebate will need to be drilled open if installing a the camper on a Double Cab Hilux Vigo. Use a Ø5mm hole and use the existing holes to drill all the way through the bottom support bracket.

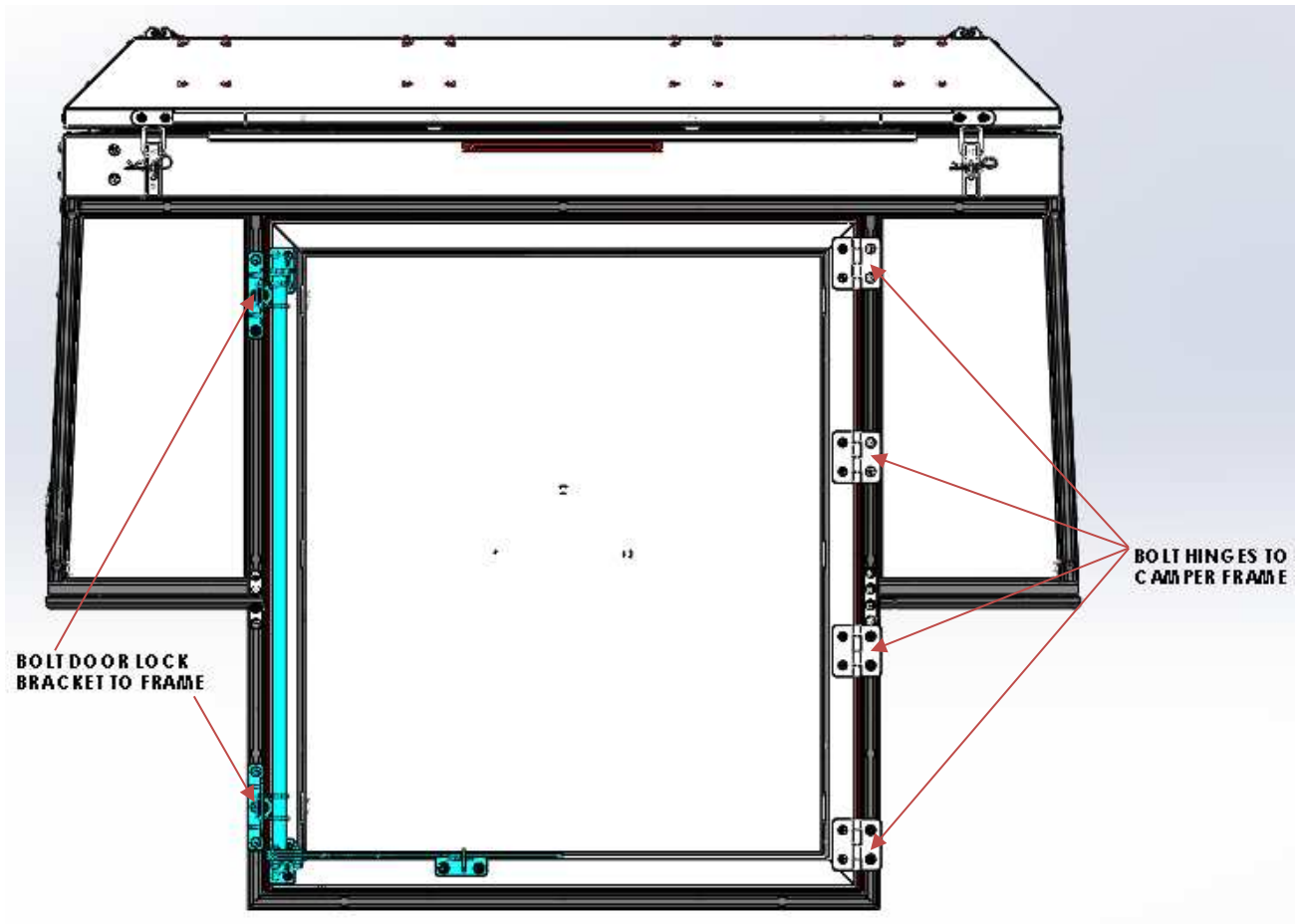


5 off Ø5mm holes to be drilled through the existing holes in the rebate through the rear bottom support bracket. 5 off Ø4.8 x 21 mm long countersunk rivets to be fitted

7. Fit rear door by mounting 4 x Butt hinges to camper frame as shown. Centre rear door, top to bottom and the hinge centers left to right. Also mount the door lock to the camper frame.



## 8. Attach hinges and lock to camper frame.



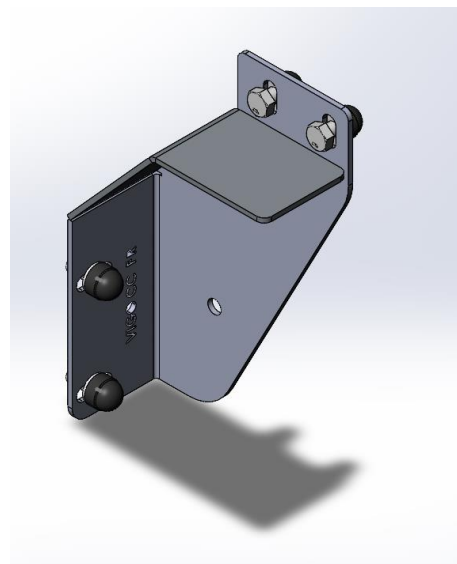
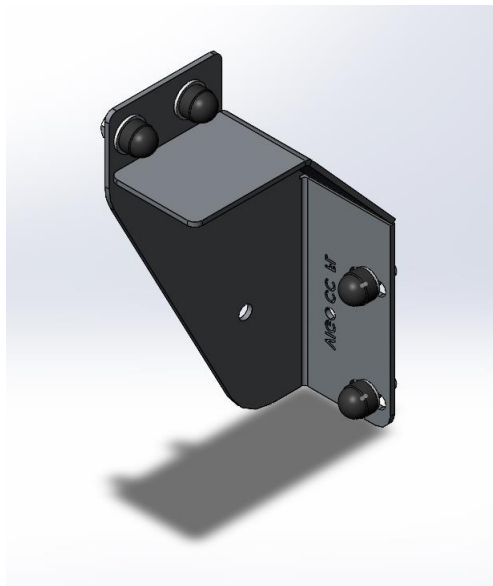
## 1. Canopy Fitment – Tools, Fasteners & Materials

The tables below show the equipment, i.e. tools and fasteners required to start the canopy fitment for a Ford Ranger.

### 1.1. Tools Required:

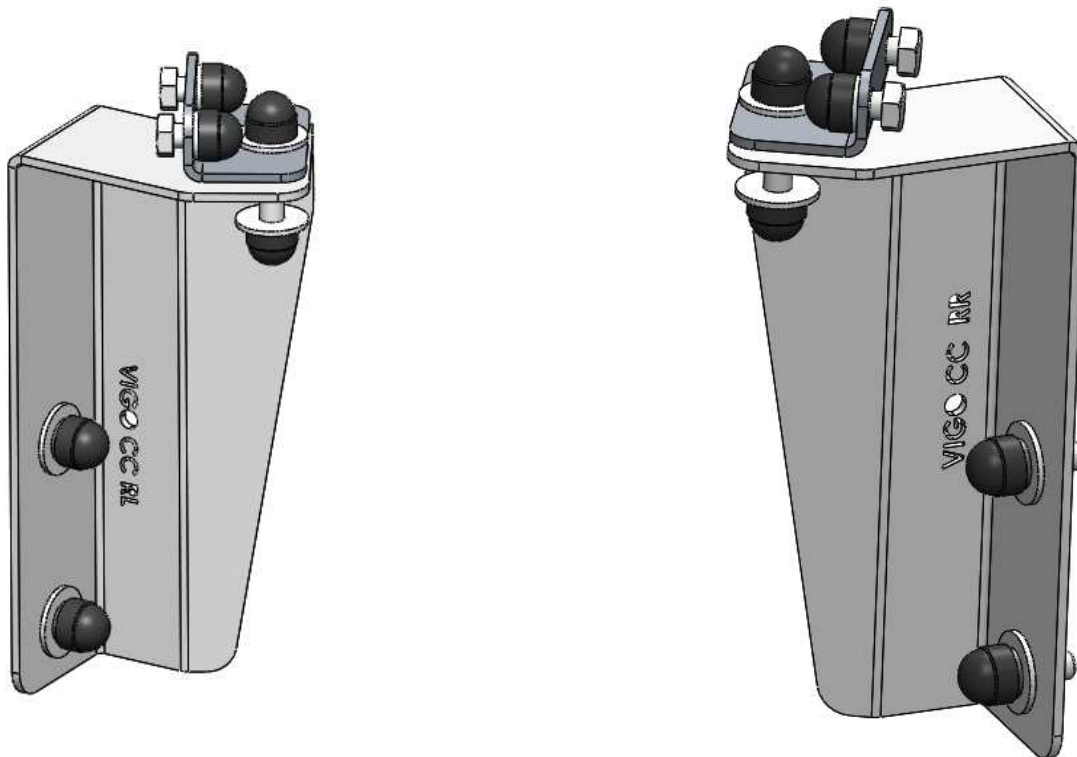
TOOL
Ratchet
T-40 Spline Socket
13mm Socket
13mm Ring Flat Spanner
Hand Drill
Ø9mm Drill Bit

### 2. Front left hand and right hand mounting bracket assemblies.



ITEM NO.	PART NUMBER	DESCRIPTION	MATERIAL	QTY.
1	162-VIGO-FNT-MNT-BRKT-LH-01-00	FRONT MOUNT BRACKET LH	Mild Steel (3mm)	1
2	162-VIGO-FNT-GUSS-01-00	FRONT MOUNTING BRACKET GUSSET	Mild Steel (3mm)	1
3	DIN 9021 M8 Flat Washer	Oversized Flat Washer	AISI 316	4
4	DIN 985 M8 Nyloc Nut	Nyloc Nut	AISI 316	2
5	DIN 933 M8x20 Hex Head Bolt	Hex Head Bolt	AISI 316	4
6	M8 Nut Cap	Plastic Nut Cap	PE Low/Medium Density	4
7	DIN 125B M8 Spring Washer - Compressed	M8 Spring Washer	AISI 316	2

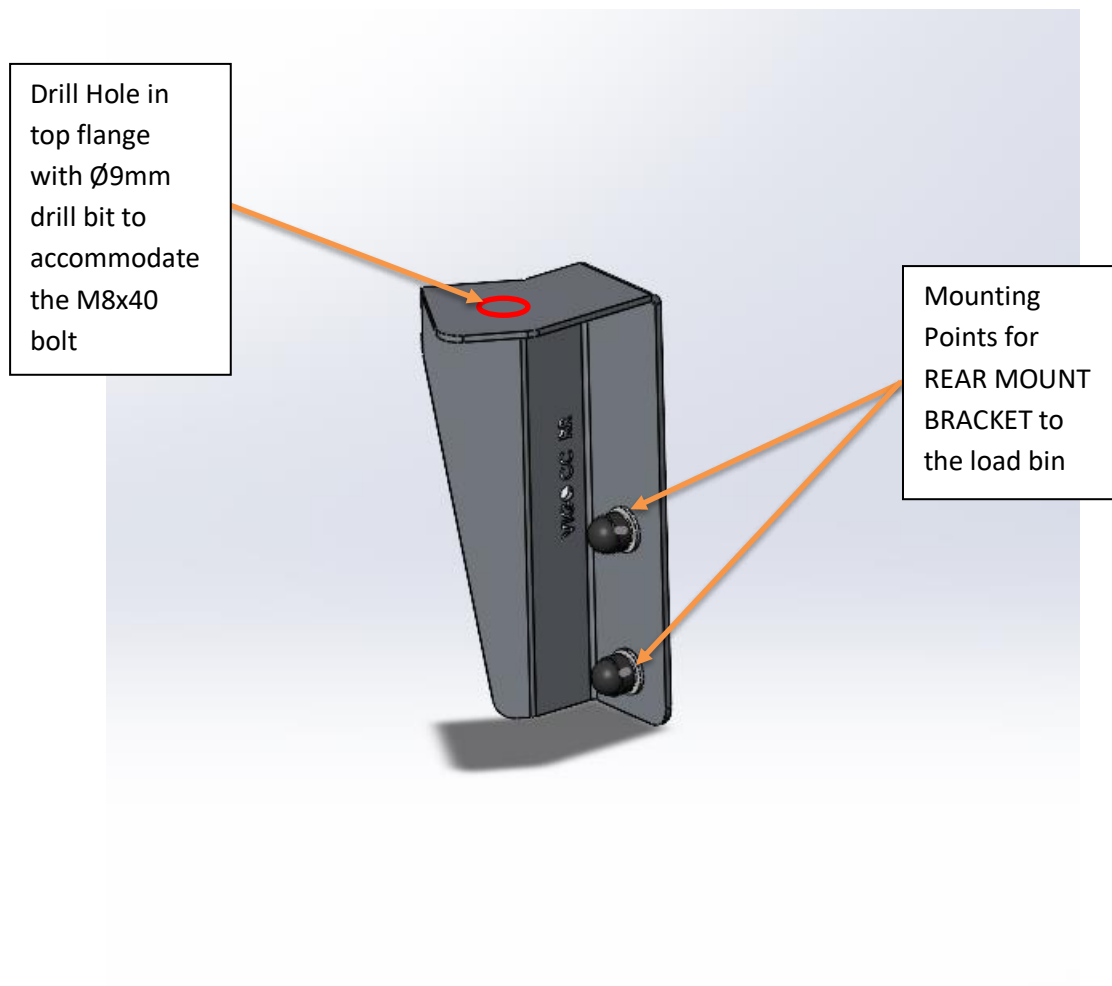
### 3. Rear left hand and right hand mounting bracket assemblies.



ITEM NO.	PART NUMBER	DESCRIPTION	MATERIAL	QTY.
1	162-VIGO-RER-MNT-BRKT-LH-01-00	REAR LH MOUNT BRACKET	Mild Steel (3mm)	1
2	212-MNT-BRKT-01-00	TOP MOUNTING BRACKET	AISI 304 (3mm)	1
3	M8 Nut Cap	Plastic Nut Cap	PE Low/Medium Density	6
4	M8x40 Hex Head Bolt	Hex Head Bolt	AISI 316	1
5	DIN 9021 M8 Flat Washer	Oversized Flat Washer	AISI 316	4
6	DIN 985 M8 Nyloc Nut	Nyloc Nut	AISI 316	3
7	DIN 125A M8 Flat Washer	Flat Washer	AISI 316	2
8	DIN 933 M8x20 Hex Head Bolt	Hex Head Bolt	AISI 316	4
9	DIN 125B M8 Spring Washer - Compressed	M8 Spring Washer	AISI 316	2

**Important note:** A hole needs to be drilled into the REAR MOUNT BRACKETS to accommodate the M8x40 bolt. The way to determine where this hole should be located is by first fastening the REAR MOUNT BRACKETS to the load bin and then sliding the TOP MOUNTING BRACKETS into the load rail

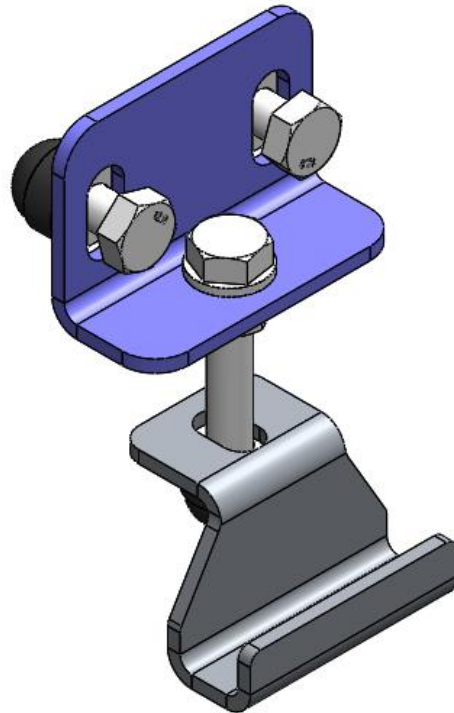
on the Canopy Camper. Line the two brackets up and mark out where the hole needs to be drilled in the top plate. Drill the hole with a  $\varnothing 9\text{mm}$  drill bit. Then proceed with correctly fastening down the mounting brackets.





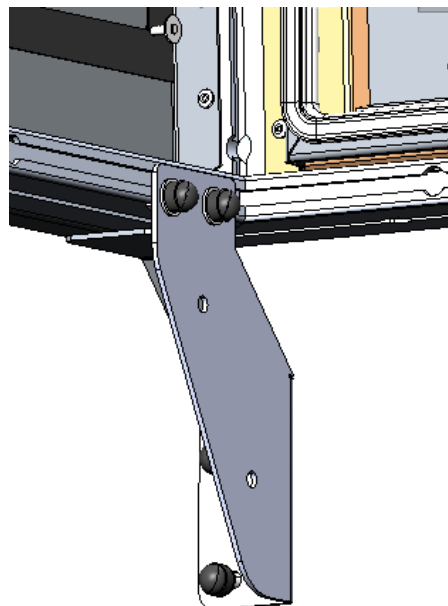
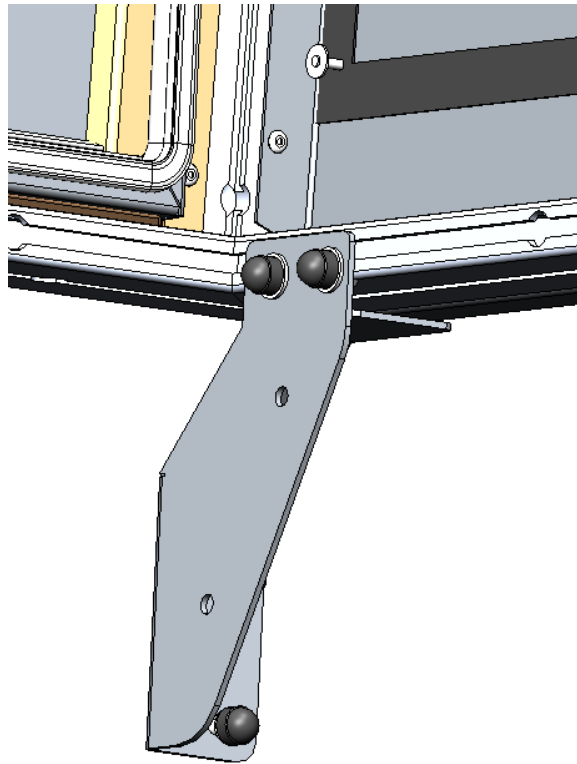
## 1. Centre mounting bracket assembly.

2 off required.



ITEM NO.	PART NUMBER	DESCRIPTION	MATERIAL	QTY.
1	CMB-000-002	BOTTOM CLAMP BRACKET	AISI 304 (3mm)	1
2	212-MNT-BRKT-02-00	MOUNTING BRACKET 2	AISI 304	1
3	M8x50 Hex Head Bolt	Hex Head Bolt	AISI 316	1
4	DIN 933 M8x20 Hex Head Bolt	Hex Head Bolt	AISI 316	2
5	DIN 125 M8 Flat Washer	Flat Washer	AISI 316	5
6	DIN 985 M8 Nyloc Nut	Nyloc Nut	AISI 316	3
7	M8 Nut Cap	Plastic Nut Cap	PE Low/Medium Density	3
8	M8 Hex Head Nut	Hex Head Nut	AISI 316	1

4. Images below showing front left hand and right hand mounting in position.



5. Images below showing rear right hand and left hand in position.

