

## CANOPIES

Safety and shelter are critical aspects to living life on the road. In more ways than one, a good canopy should combine these elements in a way that is not only easy to use, but also adaptable to change.

Back in the 1990s, when we started building the first-ever aluminium adventure canopies, we knew from our own travel experience that three factors are vital to the success of vehicle-based travel and/or overland equipment. These are weight, strength and versatility.

The trick is to find a solution that offers the best combination of all three. Until engineers start building passenger planes out of fibreglass or stainless steel, we're going to stick with the material that offers the best possible (and most economical) strength-to-weight ratio: Aluminium.

But, aside from the obvious strength / weight benefits, we favour aluminium for its unsurpassed corrosion-resistance, its UV stability, its repair-ability, and its flexibility – essential qualities in any off-road environment.



# CHOOSE YOUR MODEL:

## COUTOUR CANOPY



With Side Windows



With Solid Doors

## TECHNICAL FEATURES

<b>FINISH</b>	Powder - Coated <b>Black</b>
<b>SLEEK NEW DESIGN</b>	Rigid formed roof panel.
<b>LIGHTING</b>	Integrated brake light & 3 internal LED lights.
<b>SEAL</b>	Double door seal design with superior weather and dust proofing.
<b>DOORS</b>	Centre flex, water proof hinges - prevents rain water dripping in when door is open. - Full length side doors for full access on DC Canopies.
<b>LOCKS</b>	Reliable, tamper-proof and keyed alike.
<b>GLASS</b>	Automotive safety glass, E-marked.
<b>WEIGHT</b>	Approx. 57kgs for the Contour Canopy without side windows and 62kgs with side windows.
<b>GAS STRUTS</b>	High quality units made in Germany.
<b>REINFORCED ROOF</b>	One can load 150kg directly on to roof. Mounting Rail fitted on canopy roof as standard. Can be used with M8 cup square bolts, tie down rings etc.
<b>WINDOWS</b>	Optimised rear window for maximum visibility. Front & Side windows come standard with sliders
<b>VENTILATION</b>	Front mounted positive pressure vent.
<b>WATERPROOF</b>	Canopy is waterproof.

# CHOOSE YOUR MODEL:



## ADVENTURE CANOPY

Rear door is 900mm wide.



## EXPLORER CANOPY

Full width rear door, allows full access to load bay

### FINISH

Powder - Coated **Black & Silver**



**Tread** - Available in black & silver



**Smooth** - Available in black & silver

**SLEEK NEW DESIGN** Our canopies are CAD designed to ensure consistency and quality.

**FRAME** Tig welded aluminium extrusions.

**PANELS** Aluminium sheet CNC laser-cut and bent.

**DOORS** Centre flex, water proof hinges - prevents rain water dripping in when door is open. - Full length side doors for full access on DC Canopies.

**LOCKS** Reliable, tamper-proof and keyed alike.

**GLASS** Automotive safety glass, E-marked.

**WEIGHT** Approx. 57 kg for DC Canopy one of the lightest canopies of its kind, two people can easily lift it onto the load bin.

**FITMENT** No-drill fitment on most modern vehicles. Fitment brackets fasten to manufacturer's load points on the load bin. Recommended fitment time 20 - 30 minutes by one person.

**GAS STRUTS** High quality units made in Germany.

**REINFORCED ROOF** One can load 150kg directly on to roof. Mounting Rail fitted on canopy roof as standard. Can be used with M8 cup square bolts, tie down rings etc.

**READY TO FIT** The canopy is delivered ready to fit to the vehicle, no need to assemble.

**WATERPROOF** Canopy is waterproof.

**FORD RANGER T6 2012+**

Available in **Double**, **Extra** and **Single** Cab

**CHEVY COLORADO 2017+**

Available in **Double** Cab

**ISUZU KB 2013+**

Available in **Double** and **Extra** Cab

**ISUZU 2020**

Available in **Double** and **Extra** Cab

**JEEP GLADIATOR**

Available in **Double** Cab

**MERCEDES BENZ X CLASS**

Available in **Double** Cab

**MITSUBISHI TRITON 2016+**

Available in **Double** and **Extra** Cab

**NISSAN NAVARA D40**

Available in **Double** and **Extra** Cab

**NISSAN NAVARA NP300**

Available in **Double** (and **EU DC**) and **Extra** Cab (and **EU XC**)

**HILUX VIGO 2005+**

Available in **Double** and **Extra** Cab

**HILUX REVO 2016+**

Available in **Double**, **Extra** and **Single** Cab

**LAND CRUISER 79**

Available in **Double** and **Single** Cab

**VW AMAROK**

Available in **Double** Cab

**TOYOTA TACOMA GEN2**

Available in **Long** Bed and **Short** Bed (2005+)

**TOYOTA TACOMA GEN3 2016+**

Available in **Long** Bed and **Short** Bed

**GWM P-SERIES**

Available in **Double** Cab



Single Cab



Double Cab

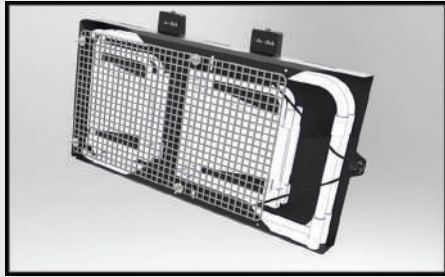


Extra Cab



# CANOPY ACCESSORIES

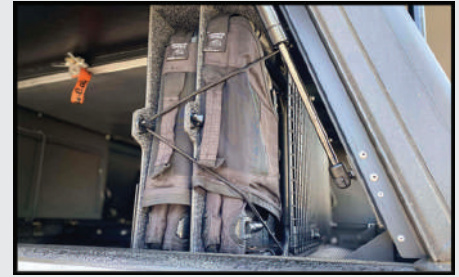
AVAILABLE FOR THE **EXPLORER, ADVENTURE & CONTOUR** CANOPY



2 Chair Carrier



Side Prep Table



4 Chair Carrier



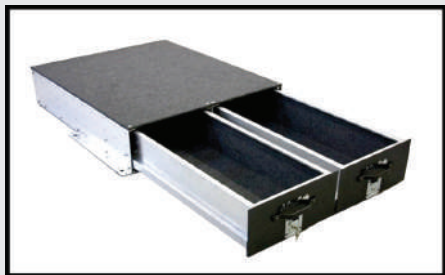
Ammo Box Slide



Canopy Table Bracket



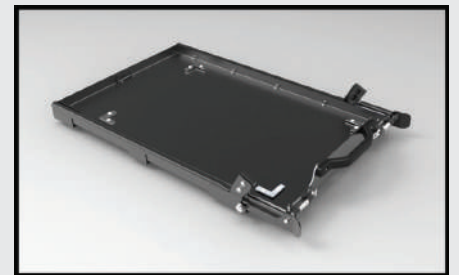
Alu - Table



Drawer System



Load Bars



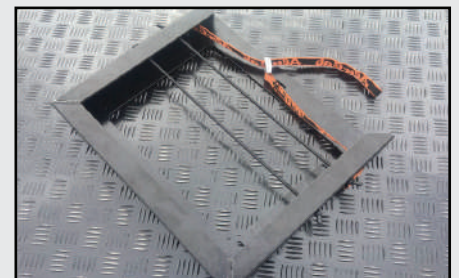
Tilting Fridge Slide - FS1, FS2 & FS3



Roof Rack Tray



Roof Rack Tray with Table Bracket



Braai Grid Holder

All bolt-on to canopy with no drilling fitment kits.

## CONTOUR CANOPY EXCLUSIVE ACCESSORIES



Contour Canopy Security Window Grid

EXPLORER & ADVENTURE CANOPY EXCLUSIVE ACCESSORIES



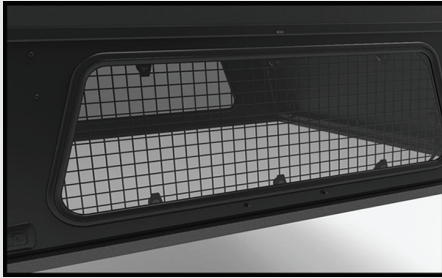
Canopy Cupboards



Recovery Kitting for Cupboard



Kitchen Kitting for Cupboard



Security Window Grid



Push Button Lock Cover



**FORD RANGER T6 2012+**

Available in **Double** and **Extra** Cab

**ISUZU DMAX 2020**

Available in **Double** Cab

**JEEP GLADIATOR 2019+**

Available in **Double** Cab

**NISSAN NAVARA NP300 ZA 2015+**

Available in **Double** Cab

**NISSAN NAVARA NP300 EU 2015+**

Available in **Double** Cab

**TOYOTA HILUX REVO 2016+**

Available in **Double** and **Extra** Cab

**VW AMAROK**

Available in **Double** Cab

**TOYOTA TACOMA GEN3 2016+**

Available in **Long** Bed and **Short** Bed



# Alu-Cab™

ULTIMATE OVERLAND PRODUCTS

