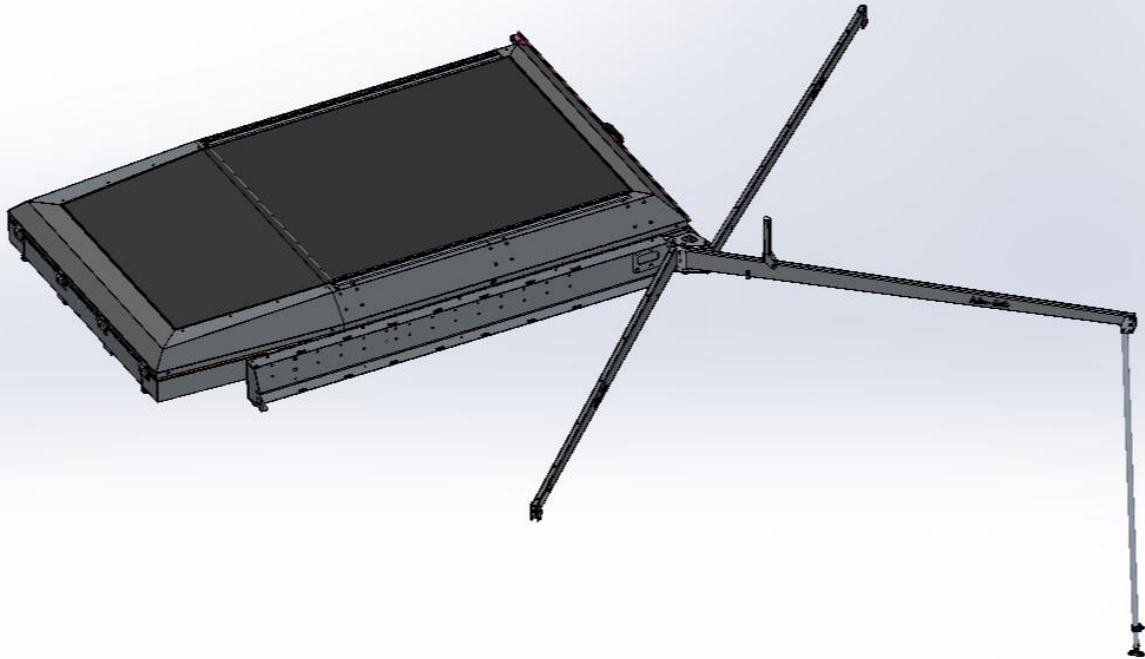


FITMENT INSTRUCTIONS

Alu-Cab™



2 Meter Shadow Awning to GEN3 Tent Mounting Kit (AWN-2M-BKT-GEN3)

2 Meter Shadow Awning Fitment – Tools, Fasteners & Materials

All rights reserved. No part of this document may be reproduced, translated, stored in a retrieval system, or transmitted, in any form or by any means, electronic, mechanical, photocopying, recording or otherwise, without prior written permission of the owner.

Review all instructions information carefully before installation.

Any damages, direct or incidental to the installer and/or property due to incorrect installation of any parts are the responsibility of the installer. Due to the various applications and fitment options available, the responsibility lies with the user to ensure all mounting points are secure and tight before every trip. If unsure, consult with your Distributor regarding the operations of our products.

Users are advised to be mindful of the load they are carrying and drive in accordance with road conditions.

DISCLAIMER

Alu-Cab

1.1. Tools & Items Required:

TOOLS	ITEM
Ratchet	Diluted Isopropyl Alcohol (Preferred)
13mm Ring Spanner	Cloth
4 mm Allen Key	Black sealant, silicone or Sikaflex
Drill	
Drill Bit Ø8.5 mm	

1.2. Fasteners supplied: (Included with Mounting Kit)

ITEM	QTY
M8 FLAT WASHER	26
M8 PLASTIC NUT CAP	4
M8 NYLOCK NUT	13
M8X25 B/HD BOLT S/S	13

1.3 Hardware Required: (Included with Mounting Kit)

Nr	ITEM	DESCRIPTION	QTY
1	AWN-2M-BKT-GEN3-P001	2m AWNING TENT BRACKET - FRONT	1
2	499-AWN-TENT-FNT-BCK-PLT-01	FRONT BACKING PLATE 01	2
3	499-AWN-TENT-RER-MNT-BRKT-01	REAR MOUNT BRACKET	1
4	499-AWN-TENT-RER-BCK-PLT-01	BACKING PLATE 1	1
5	499-AWN-TENT-RER-BCK-PLT-02	BACKING PLATE 2	1

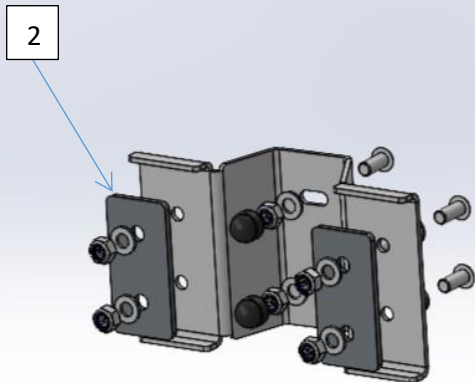
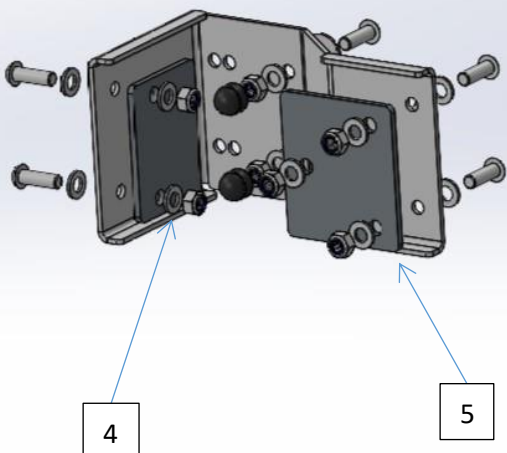
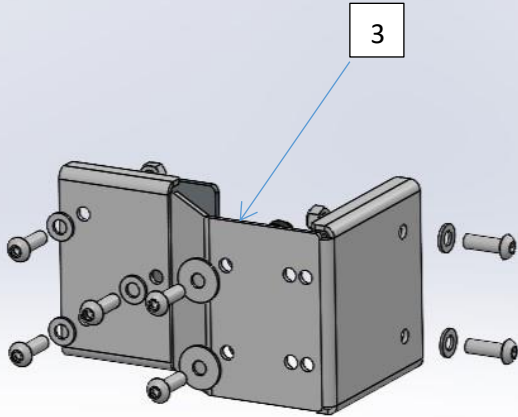
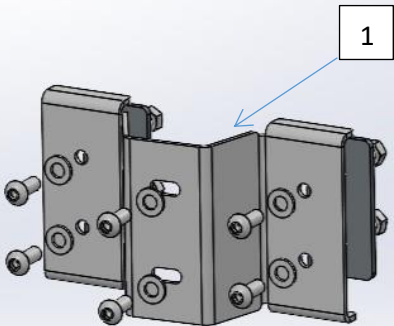
NOTE The Shadow Awning is sold separately and is not included in this mounting kit.



WARNING

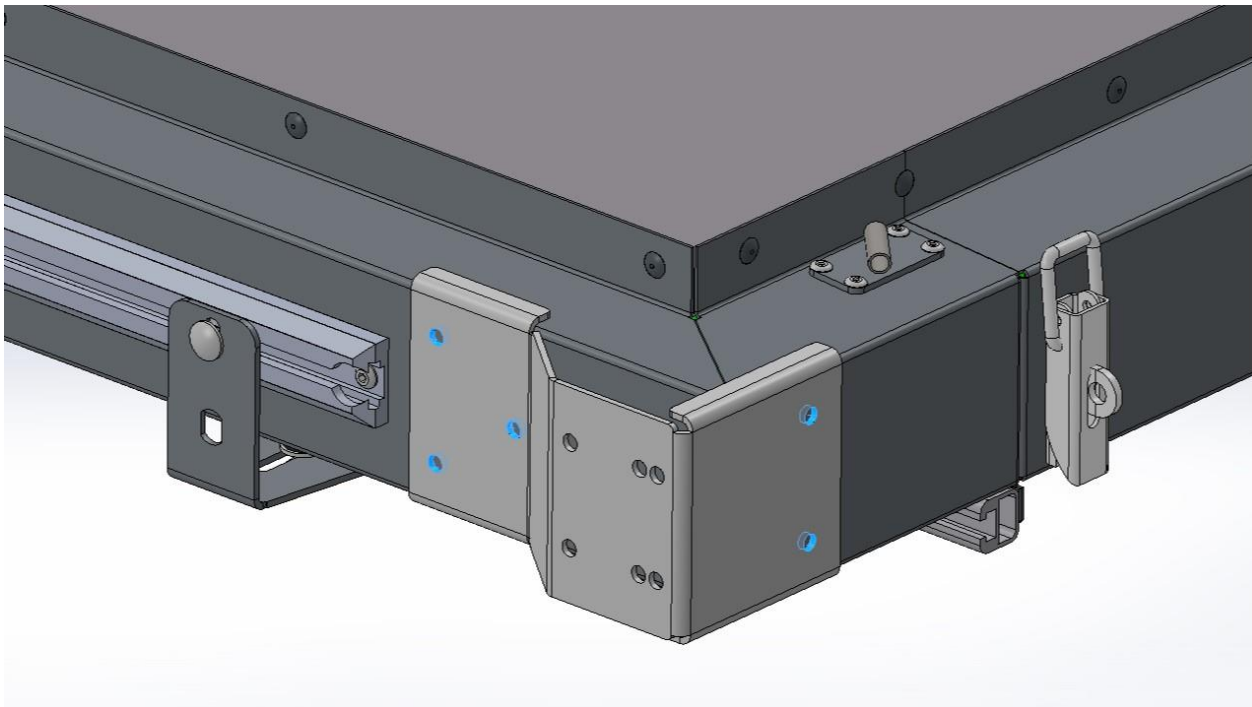
Always wear appropriate PPE (Personal protection equipment) when fitting this product. Although the mounting kit is designed to be DIY, if you have any doubts or concerns, contact an accredited fitment centre to carry out the work. Alu-Cab will not be liable for any injury to persons, and/or damage to products and/or vehicles.

Component Identification:

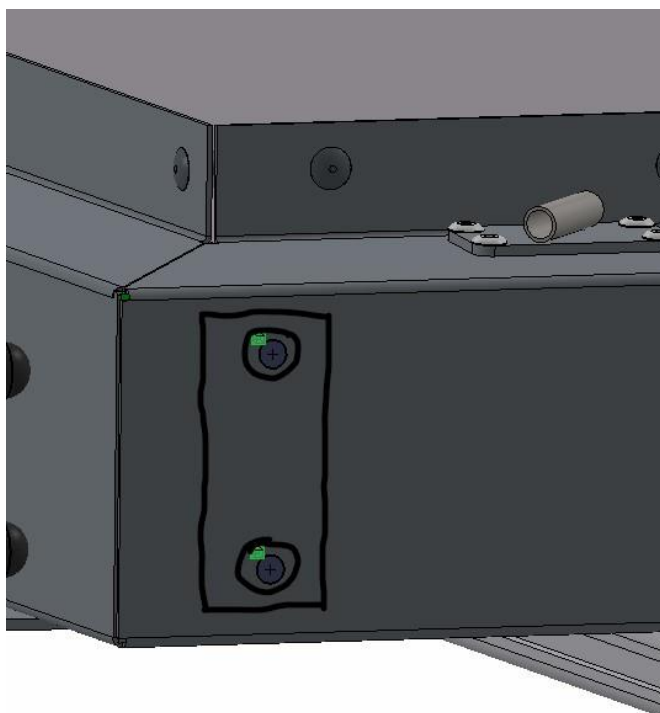


Fitment of Rear Mounting Bracket

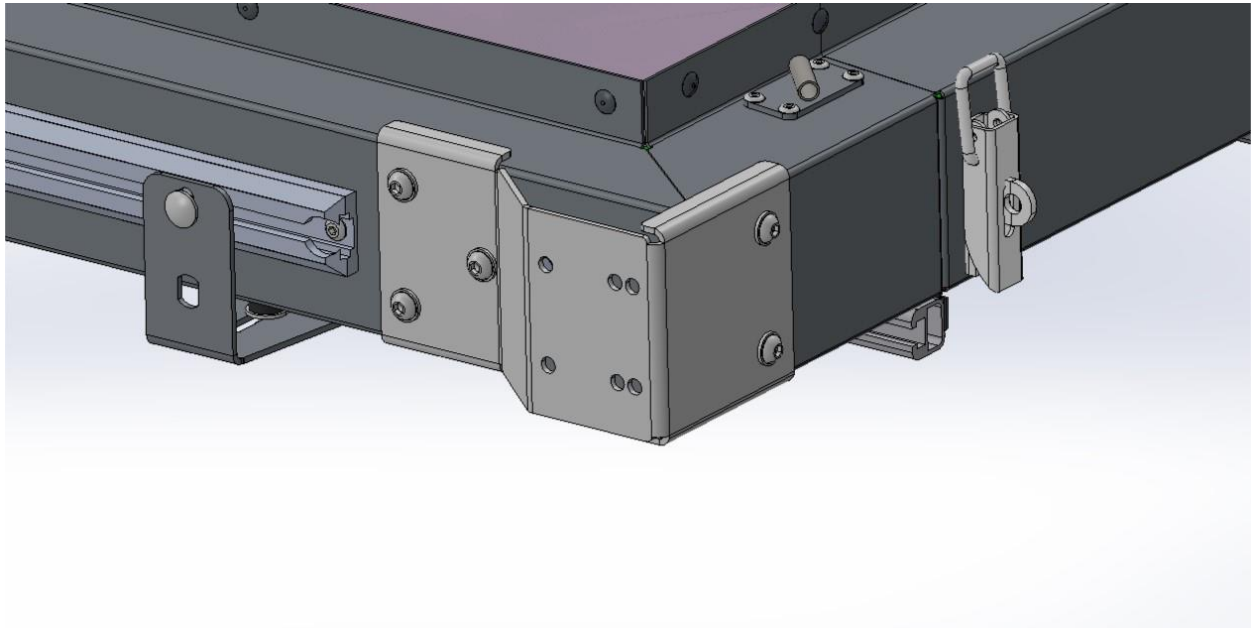
Place the Rear Bracket on the desired rear corner of the tent (left or right side) and mark out the hole positions to be drilled with a $\Phi 8.5$ mm drill bit, as shown in the image below:



Apply unbroken beads of sealant around all the drilled holes, as well as making an unbroken bead around the perimeter, within the bounds of where the corner bracket will mount. See image below:



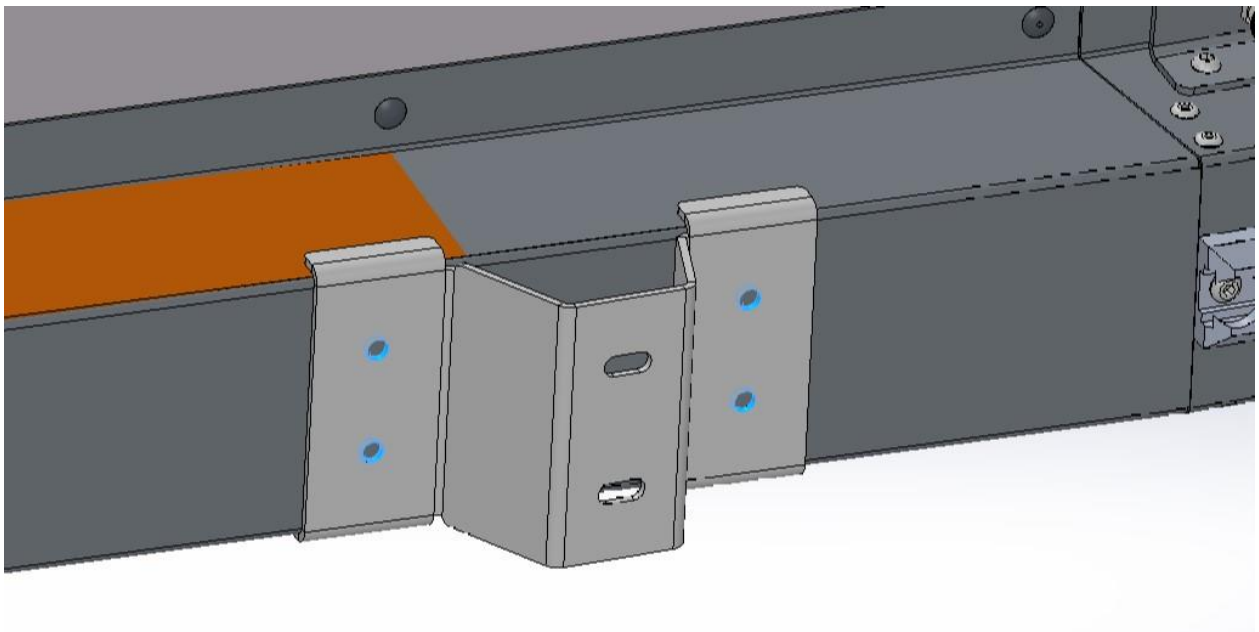
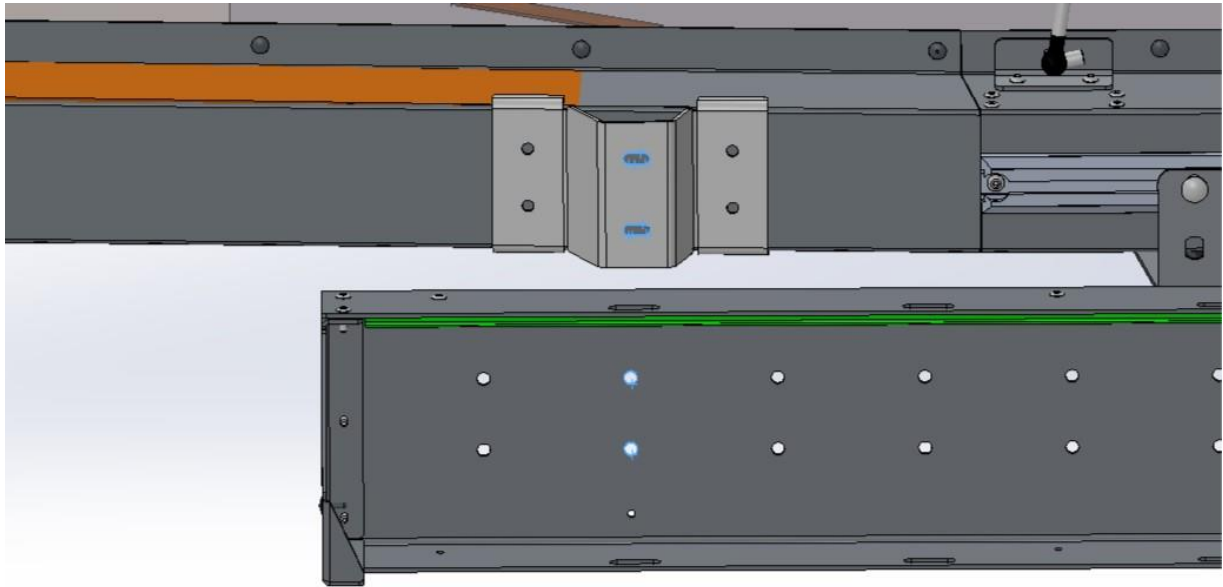
Fasten the rear bracket using the bolts, washers and nuts supplied. Ensure the tent panel is sandwiched between the rear bracket and the accompanying backing plates as in the images below:



After tightening up the fasteners, wipe away any excess sealant that has squeezed out past the brackets, on the outside surfaces. The preferred cleaning agent is a 50-50 mixture of isopropyl alcohol and water. Refrain from using harsh chemicals, as they may damage the powder coating.

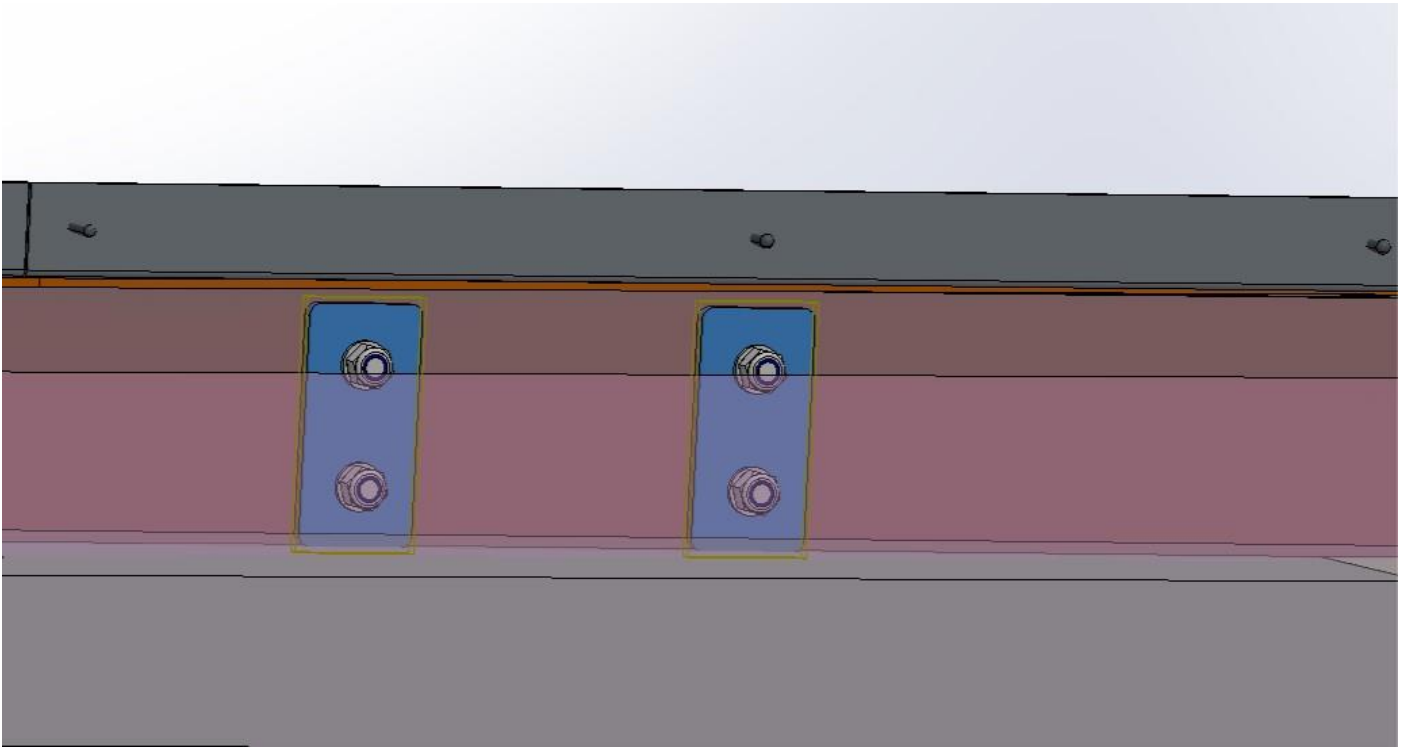
Fitment of Front Mounting Bracket

To find the position for the front mounting bracket, align the awning with the front bracket on the tent and mark out the 4 holes to be drilled into the side of the tent. Align the 2nd row of mounting holes on the awning channel, with the mounting slots on the front bracket for the correct placement.



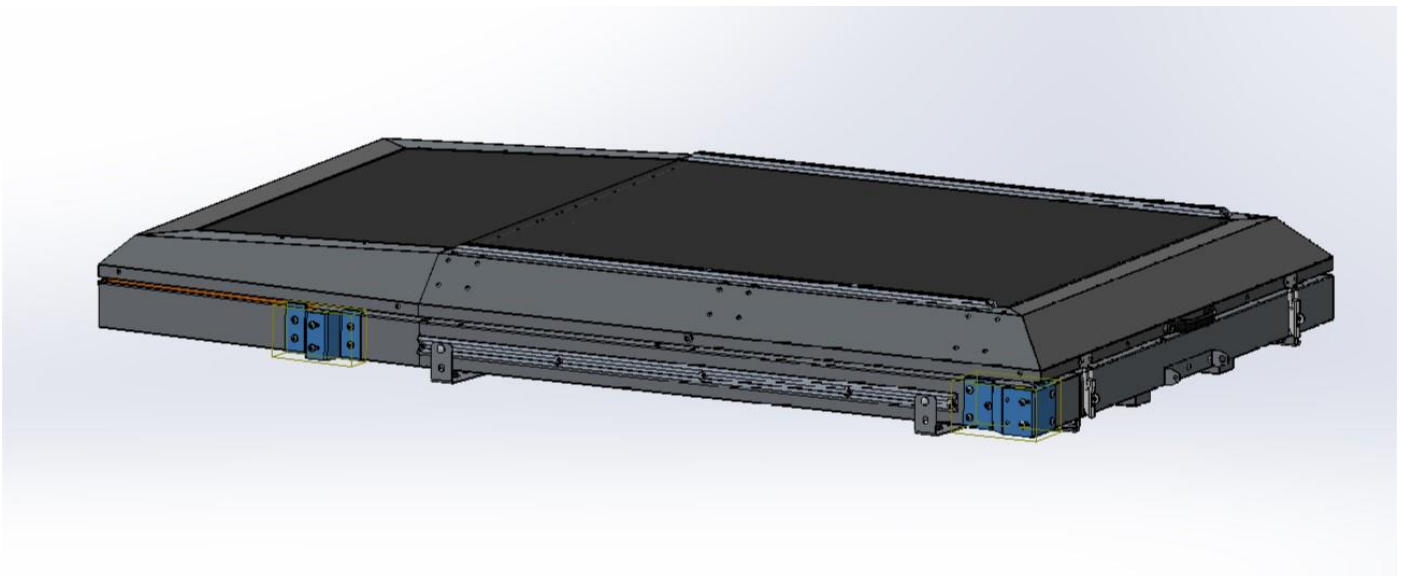
Apply unbroken beads of sealant around all the drilled holes, as well as making an unbroken bead around the perimeter, within the bounds of where the bracket will mount. Use the same technique, as described in *Fitment of Rear Mounting Bracket*.

When fastening the front bracket, attach the accompanying backing plates to the inside wall of the tent, as done with the rear mounting bracket assembly.



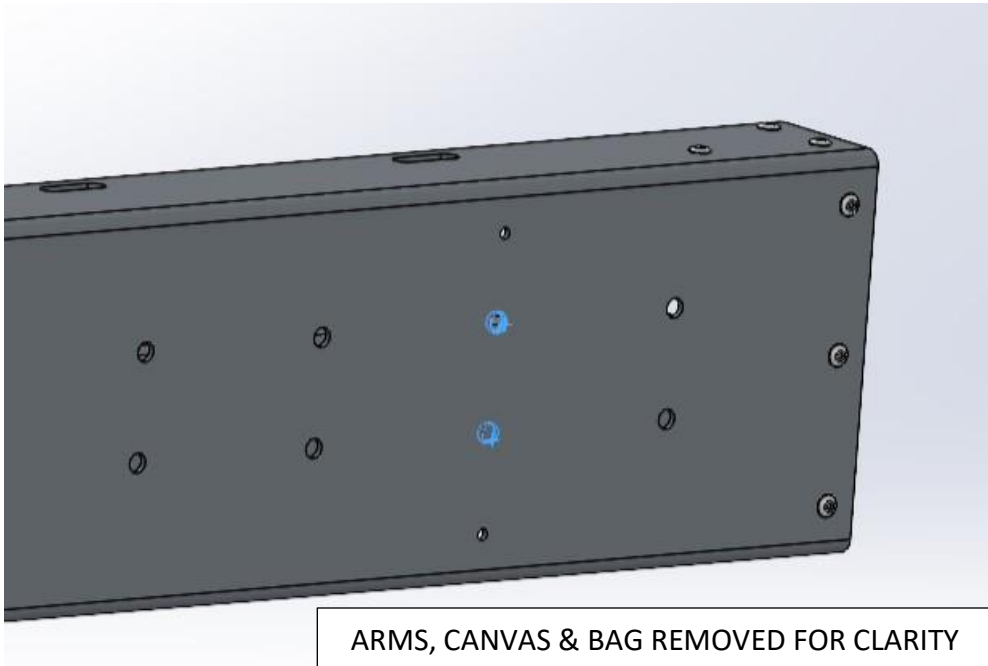
After tightening up the fasteners, wipe away any excess sealant that has squeezed out past the brackets, on the outside surfaces. The preferred cleaning agent is a 50-50 mixture of isopropyl alcohol and water. Refrain from using harsh chemicals, as they may damage the powder coating.

The mounted assembly will look like the image below:

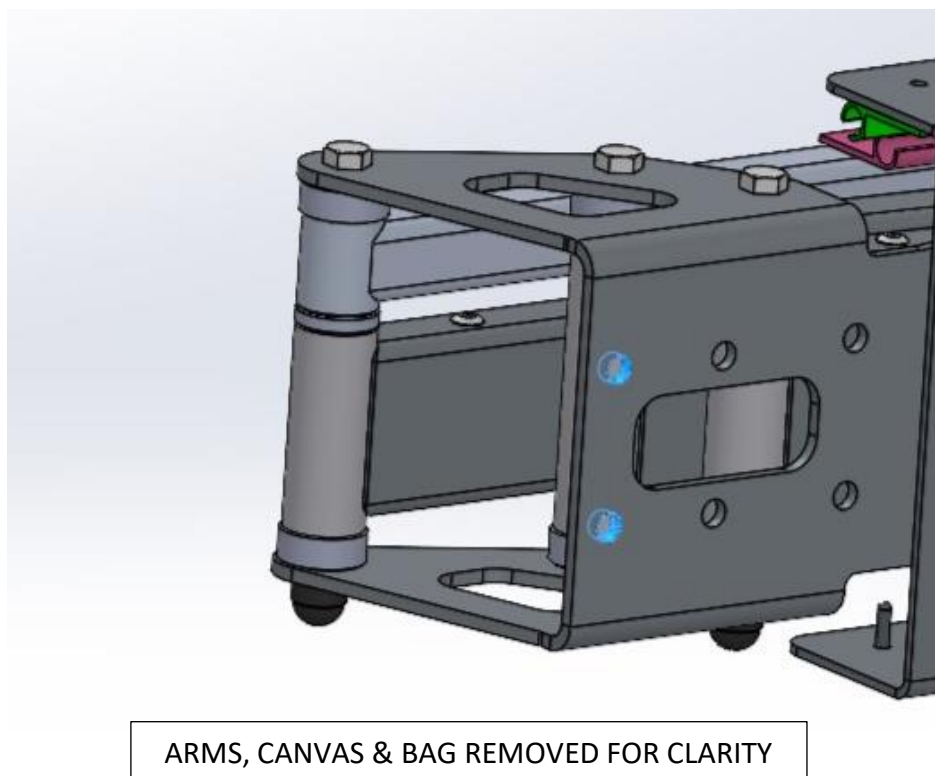


Fitment of Shadow Awning to Mounting Brackets

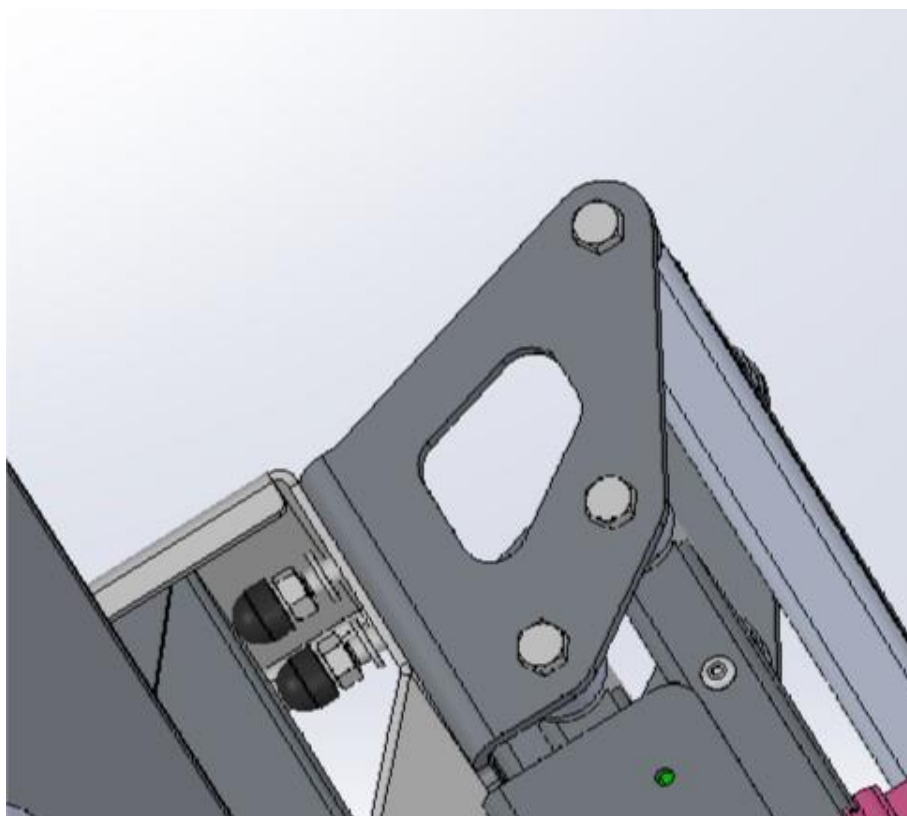
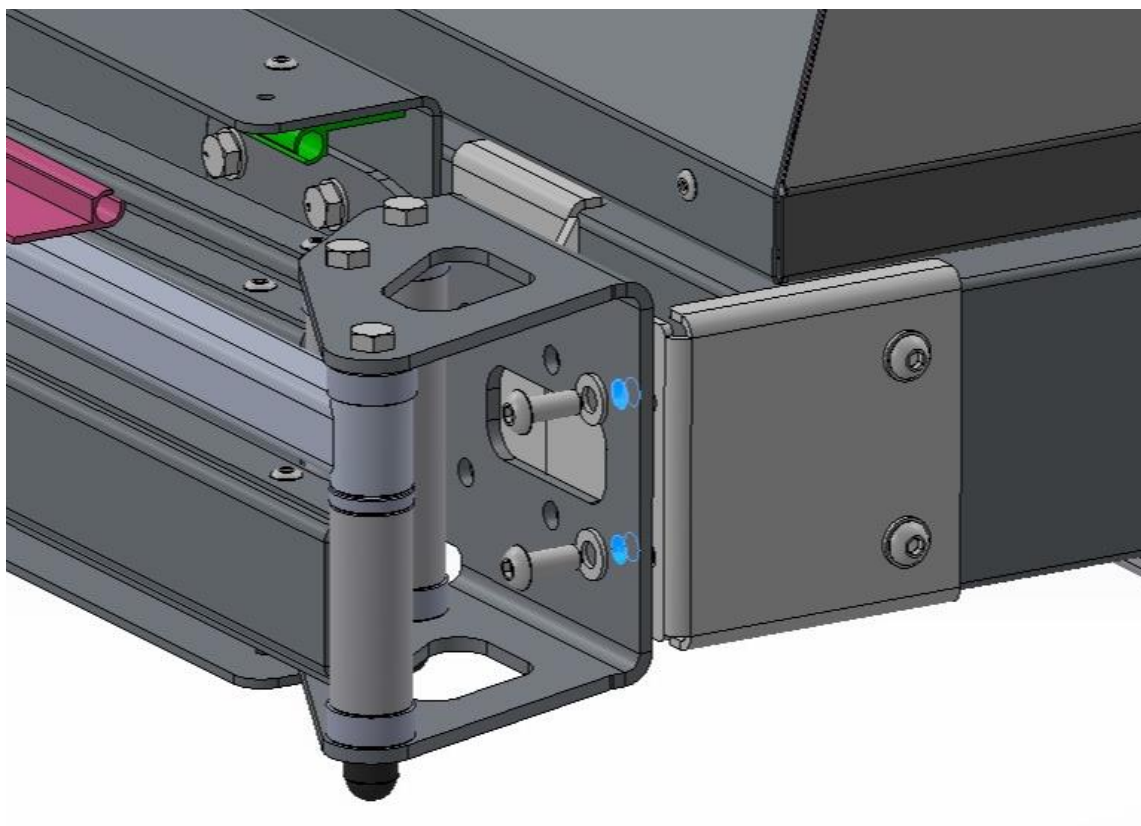
Unzip the Shadow Awning bag, and start to pivot the arms outwards, as if opening the awning fully. Count the pairs of holes, starting from the front. The bag will need to be drilled through, at hole pair two (2), as shown in the image below. Ensure that the arms, and/or canvas is safely out of the way before drilling. Use an $\Phi 8.5$ mm drill bit.



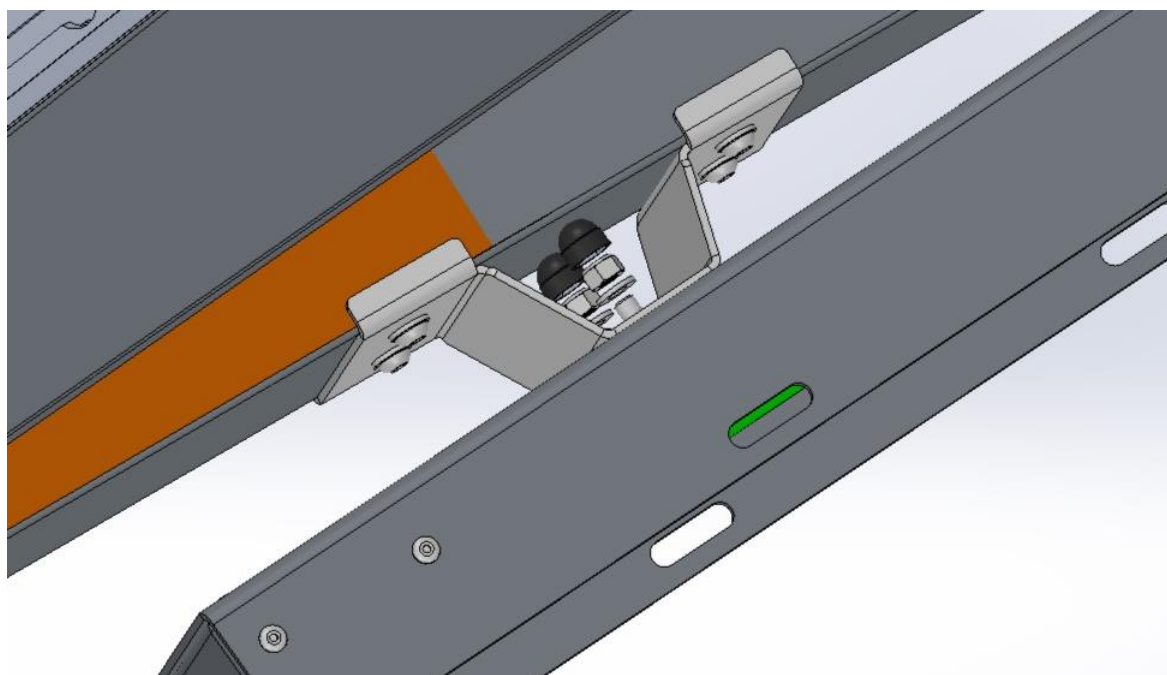
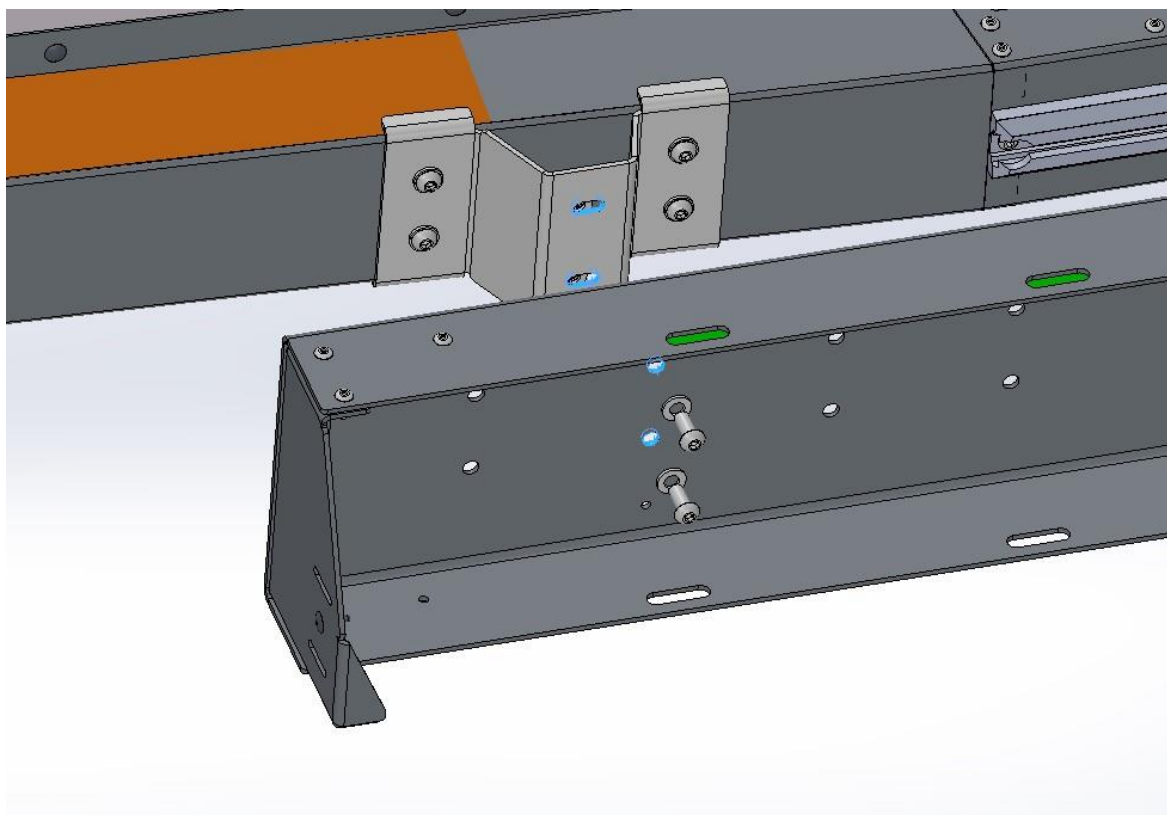
At the rear of the Shadow Awning, at the pivot point plate, count the hole pairs from the rear, and drill through the bag at hole pair one (1), as shown in the image below. Ensure that the arms, and/or canvas is safely out of the way before drilling. Use an $\Phi 8.5$ mm drill bit.



Align the rear of the Shadow Awning, with the installed rear corner bracket. Insert the fasteners, as per the section *Component Identification*, do not fully tighten the fasteners.



Align the front of the Shadow Awning, with the installed front bracket, as shown below. Insert the fasteners, as per the section *Component Identification*. Ensure that the awning is seated correctly, and not leaning forwards or backwards. Tighten these fasteners, and then tighten the fasteners on the rear corner bracket.



Once mounted, the awning will align with the tent, as shown below (bag removed for clarity):

