



FITMENT INSTRUCTIONS

GWM P-Series DC Canopy

Installation Instructions

Preliminary information

Installation and fitment instructions includes the tools required, fasteners included in the kit, and the hardware included in the kit.

Please follow the instructions and check installation steps with the images in this document.

Service Enquiries email
queries@alu-cab.com



Installation Instructions

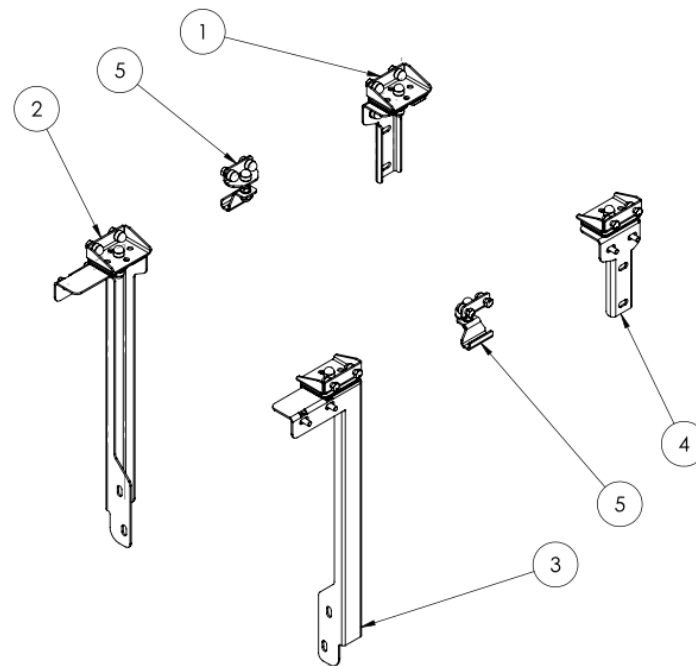
Tools Required

ITEM NO.	DESCRIPTION
1	Ratchet
2	13mm Socket / Spanner
3	11mm Socket / Spanner
4	Loctite 243 or Similar
5	Turpentine
6	Cloth
7	Black sealant (Silicone / Sikaflex)

Installation Instructions

Packing List:

ITEM NO.	PART NUMBER	DESCRIPTION	QTY.
1	C-GWM-M-BKT-A01	GWM FRONT LHS MOUNTING ASSY	1
2	C-GWM-M-BKT-A03	GWN REAR LHS MOUNTING ASSY	1
3	C-GWM-M-BKT-A04	GWM REAR RHS MOUNTING ASSY	1
4	C-GWM-M-BKT-A05	GWM FRONT RHS MOUNTING ASSY	1
5	CMB-000-000	CENTRE MOUNTING BRACKET ASSEMBLY	2



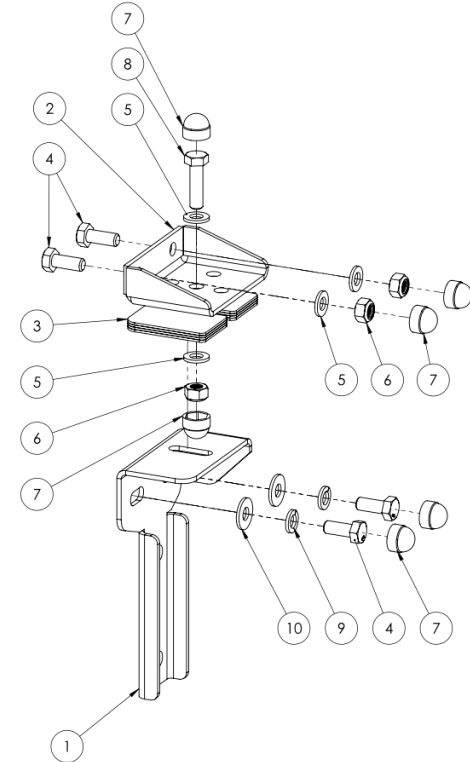
Installation Instructions

Packing List:

C-GWM-M-BRKT-A01 GWM FRONT LHS MOUNTING ASSY

RHS Indicated, LHS uses the same hardware apart from item 1 which is replaced with the mirrored version of the bracket.

ITEM NO.	PART NUMBER	DESCRIPTION	QTY.
1	C-GWM-M-BKT-P001	GWM LHS FRONT MOUNT BRKT	1
2	AC001-CAN-MNT-BRKT-01	CANOPY MOUNTING BRACKET	1
3	AC001-STD-SHIM-01	STANDARD SHIM 01	8
4	HEX-M8x20	M8x20 HEX BOLT S/S	6
5	FW-M8	M8x16mm FLAT WASHER S/S - DIN 125	4
6	NY-M8	M8 NYLOC NUT S/S	3
7	NCAP-M8	NUT CAP-08mm	8
8	HEX-M8x30	M8x30 HEX BOLT S/S	1
9	SW-M8	M8 SPRING WASHER S/S	4
10	FFW-M8	M8x20mm OVERSIZED WASHER S/S - DIN 9021	4

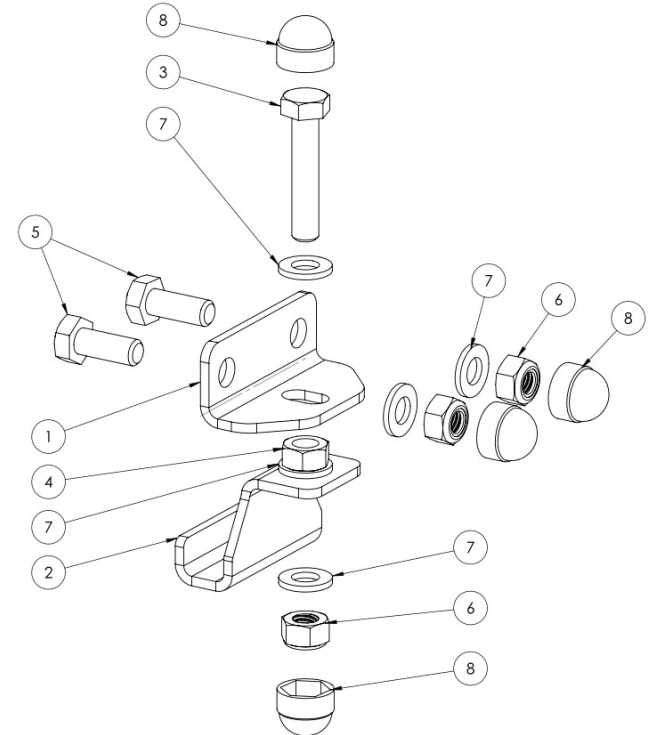


Installation Instructions

Packing List:

CMB-000-000 CENTRE MOUNTING BRACKET ASSY

ITEM NO.	PART NUMBER	DESCRIPTION	QTY
1	CMB-000-001	CENTRE TOP MOUNT BRACKET	1
2	CMB-000-002	BOTTOM MOUNT BRACKET	1
3	HEX-M8x40	M8x40 HEX BOLT S/S	1
4	NUT-M8	M8 HEX NUT S/S	1
5	HEX-M8x20	M8x20 HEX BOLT S/S	2
6	NY-M8	M8 NYLOC NUT S/S	3
7	FW-M8	M8x16mm FLAT WASHER S/S - DIN 125	5
8	NCAP-M8	NUT CAP-08mm	4



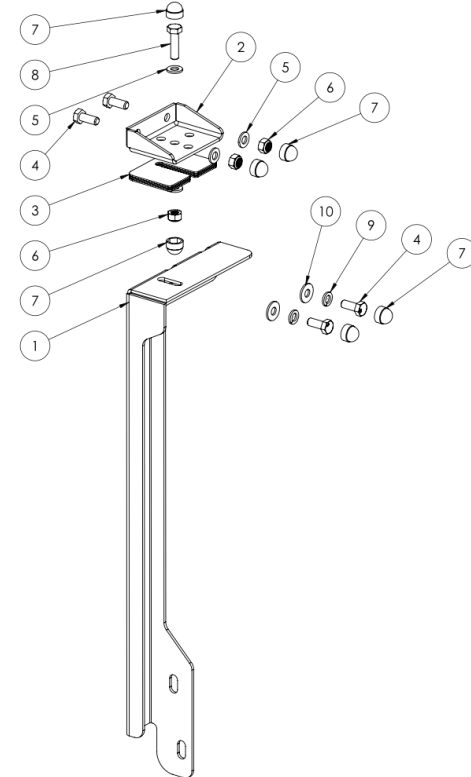
Installation Instructions

Packing List:

C-GWM-M-BKT-A04 GWM REAR RHS MOUNTING ASSY

RHS Indicated, LHS uses the same hardware apart from item 1 which is replaced with the mirrored version of the bracket.

ITEM NO.	PART NUMBER	DESCRIPTION	QTY.
1	C-GWM-M-BKT-P004	GWM REAR RHS MOUNTING BRKT	1
2	AC001-CAN-MNT-BRKT-01	CANOPY MOUNTING BRACKET	1
3	AC001-STD-SHIM-01	STANDARD SHIM 01	8
4	HEX-M8x20	M8x20 HEX BOLT S/S	4
5	FW-M8	M8x16mm FLAT WASHER S/S - DIN 125	4
6	NY-M8	M8 NYLOC NUT S/S	3
7	NCAP-M8	NUT CAP-08mm	6
8	HEX-M8x30	M8x30 HEX BOLT S/S	1
9	SW-M8	M8 SPRING WASHER S/S	2
10	FFW-M8	M8x20mm OVERSIZED WASHER S/S - DIN 9021	2



Installation Instructions

STEP
1

Position Canopy:

Ensure that all rubber seals are in place before positioning the canopy on the vehicle as per below images.

Make sure that there is enough space between the cab and the canopy (30mm from front of cab as indicated - image 2).

The rear end of the canopy should match the radius of the bed as shown in below image (3).



Installation Instructions

STEP
2

Preparation: (RHS Shown, repeat for LHS)

Remove existing OEM Mounting Bolts (11mm Spanner or Socket)

* Please note that the OEM bolts will be re-used

Front RHS Mounting Point



Rear RHS Mounting Point



Installation Instructions

STEP
3

Front Mounting Bracket Assembly:

C-GWM-M-BRKT-A01

Loosely fasten the front mounting bracket as shown in the image using the specified fasteners.

Use the OEM bolts to fasten the lower two mounting points as per image.

Align the mounting bracket and tighten properly

**Use loctite on the OEM bolts*



Installation Instructions

STEP
4

Rear Mounting Bracket Assembly

C-GWM-M-BKT-A04

Loosely fasten the rear mounting bracket as shown in the image using the specified fasteners.

Use the OEM bolts to fasten the lower two mounting points as per image.

Align the mounting bracket and tighten properly

**Use loctite on the OEM bolts*



Installation Instructions

STEP
5

Top Mount Brackets Assembly

The top mounting brackets use the nut slot rail on the canopy base

Slide the specified M8 bolts along the nut slot rail

Loosely fasten the top mounting brackets, still allowing them to slide along the rail

Align the centre mount top bracket equally spaced between the bottom mounting brackets



Installation Instructions

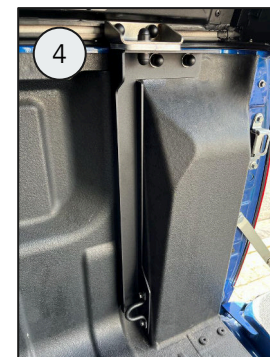
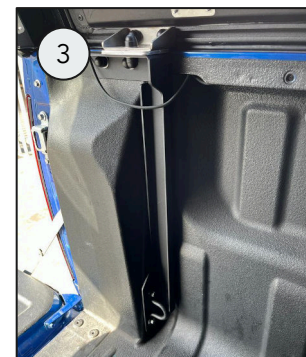
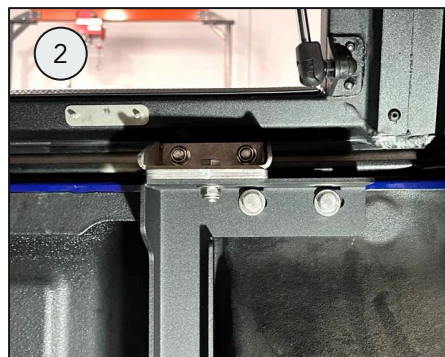
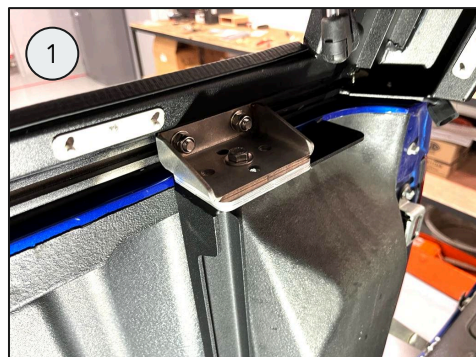
STEP 6

Complete Rear Mounting Assembly

Slide top mounting bracket to align with the mounting hole in the lower mounting bracket, once aligned fasten the top mounting bracket to the nut slot.

**Do not force the top and bottom mounting brackets together, ensure that the rubber compresses, leaving a gap between the bed and the canopy frame. The canopy frame must not touch the vehicle bed.*

Add the supplied, 1.5mm aluminium shim plates (AC001-STD-SHIM-01) in between the top and bottom mounting brackets to maintain a safe gap, then continue to fasten the top and bottom brackets together. Two to four shim plates should be sufficient.



Installation Instructions

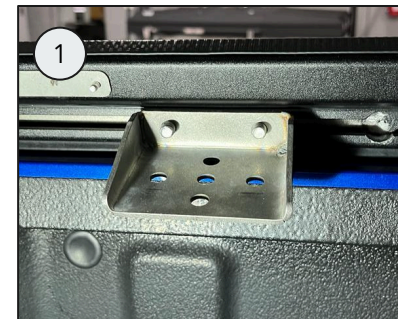
STEP
7

Complete Front Mounting Assembly

Slide top mounting bracket to align with the hole in the lower mounting bracket, once aligned fasten the top mounting bracket to the nut slot.

**Do not force the top and bottom mounting brackets together, ensure that the rubber compresses, leaving a gap between the bed and the canopy frame. The canopy frame must not touch the vehicle bed.*

Add the supplied, 1.5mm aluminium shim plates (AC001-STD-SHIM-01) in between the top and bottom mounting brackets to maintain a safe gap, then continue to fasten the top and bottom brackets together. Two to four shim plates should be sufficient.



Installation Instructions

STEP 8

Complete Centre Mounting Assembly

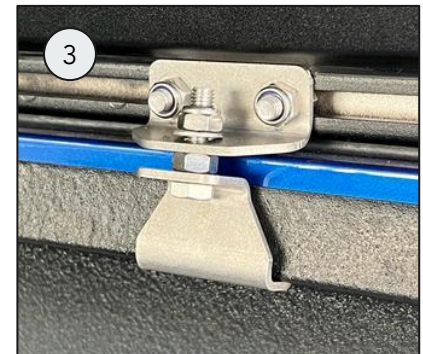
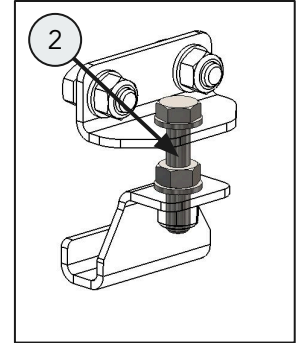
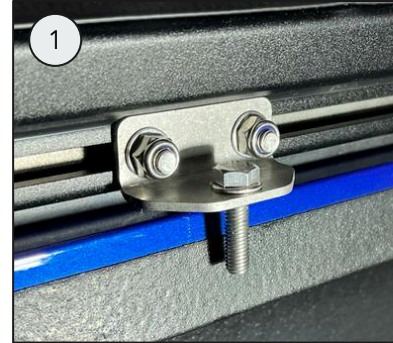
Position the top mounting bracket to have equal spacing between the front and rear mounting brackets.

*Do not force the top and bottom mounting brackets together, ensure that the rubber compresses, leaving a gap between the bed and the canopy frame. The canopy frame must not touch the vehicle bed.

The clamping bolt can be inserted from the top or bottom, whichever is easier. Insert the M8 nut and washer in between the top and bottom brackets, while inserting the clamping bolt (Image 2).

Continue to tighten the the bottom bracket to the nut and washer added in the previous step. You can now fasten the clamping bolt and nut to pull the top and bottom bracket together, maintaining the same amount of compression on the rubber as the front and rear mounting assembly.

*Do not over tighten the clamping assembly



Installation Instructions

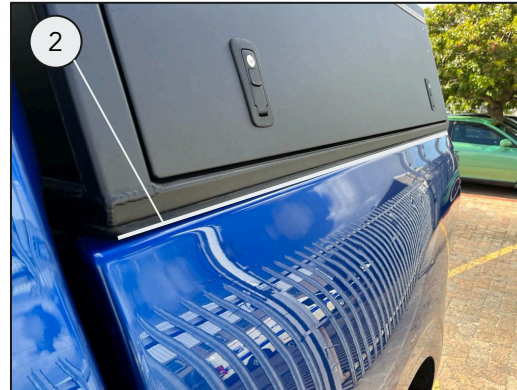
STEP
9

Finishing off:

Ensure that all mounting brackets are fastened properly

Cover all exposed bolt heads and nuts, with the supplied nut caps (NCAP-M8), as shown in below image (1)

Use Sika / Silicone to seal where the canopy rubber meets the bed of the vehicle. Turpentine and a cloth can be used to clean any excess Sika / Silicone.



Disclaimer

All rights reserved. No part of this website may be reproduced, translated, stored in a retrieval system, or transmitted, in any form or by any means, electronic, mechanical, photocopying, recording or otherwise, without prior written permission of the owner.

Review all instructions information carefully before installation.

Any damages, direct or incidental to the installer and/or property due to incorrect installation of any parts are the responsibility of the installer. Due to the various applications and fitment options available, the responsibility lies with the user to ensure all mounting points are secure and tight before every trip.

If unsure, consult with your Distributor regarding the operations of our products.

Users are advised to be mindful of the load they are carrying and drive in accordance with road conditions.

WARNING

Always wear appropriate PPE (Personal protection equipment) when fitting our products. Although the mounting kit is designed to be DIY, if you have any doubts or concerns, contact an accredited fitment centre to carry out the work. Alu-Cab will not be liable for any injury to persons, and/or damage to products and/or vehicles.

While Alu-Cab Holdings takes reasonable measures to ensure that the contents of this Website are accurate and complete, Alu-Cab Holdings makes no representations or warranties, whether express or implied, as to the quality, timeliness, operation, integrity, availability or functionality of this Website or as to the accuracy, completeness or reliability of any information on this Website. Alu-Cab Holdings reserves the right to make changes, corrections and/or improvements to the information and to the products and programs described in such information, at any time without notice.

Alu-Cab Holdings will use reasonable endeavours to maintain the availability of the Website, except during scheduled maintenance periods, and reserves the right to discontinue providing the Website or the service or any part thereof with or without notice to you. Any person who accesses this Website or relies on this Website or on the information contained in this Website does so at his or her own risk.

Occasionally, at our discretion, we may include or offer third-party products or services on our website. These third-party sites have separate and independent privacy policies. We therefore have no responsibility or liability for the content and activities of these linked sites. Nonetheless, we seek to protect the integrity of our site and welcome any feedback about these sites.